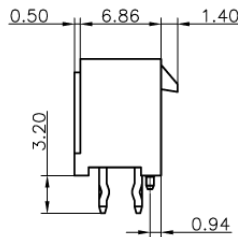
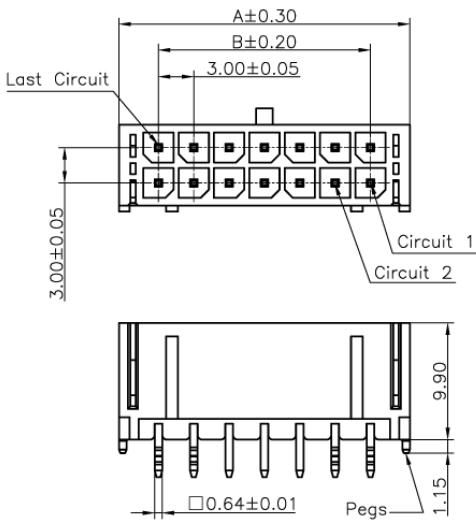


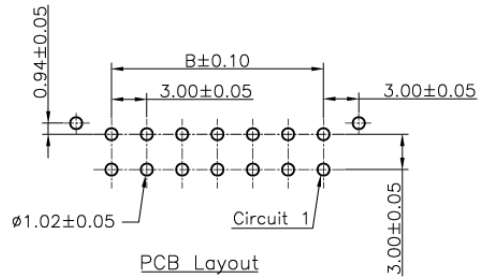
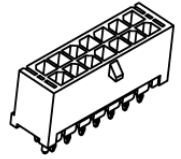
This document is the property of Amphenol Corporation and is delivered on the express condition that it is not to be disclosed, reproduced or used, in whole or in part, for the manufacture or sale by anyone other than Amphenol Corporation without its prior consent, and that no right is granted to disclose or to use any information in this document.



Circuits	Dimension		Circuits	Dimension	
	A	B		A	B
2	6.7	—	14	24.7	18.0
4	9.7	3.0	16	27.7	21.0
6	12.7	6.0	18	30.7	24.0
8	15.7	9.0	20	33.7	27.0
10	18.7	12.0	22	36.7	30.0
12	21.7	15.0	24	39.7	33.0

Specifications:

Current rating: 5.0A AC, DC
 Voltage rating: 250V AC, DC
 Contact resistance: 10m ohm Max
 Insulation resistance: 1000M ohm Min
 Withstanding voltage: AC 1500V AC/minute
 Operating Temperature: -25°C ~ +105°C
 Materials:
 Insulator: High Temp Plastic (Nylon 46 UL94V-0)
 Insulator Color: Black
 Contact: Copper Alloy
 Finish: Tin Plated



TOLERANCE (mm)	APPROVALS	DATE	TITLE	AMPHENOL Amphenol European Design Center	
X. ±0.3	DRAWN Stephane	06/Jun/2007	3.0mm Power Connector Top Entry Dip w/Pegs	Scale N.A.	Sheet 1 of 1
XX ±0.2	CHECKED Rob	06/Jun/2007			
XXX ±0.15	APPROVED Rob	06/Jun/2007			
UNLESS OTHERWISE SPECIFIED			UNIT: mm	SIZE: A4	DRAWING N° MF30-DVP1-XX
					REV. A