

FEATURES AND SPECIFICATIONS

Features and Benefits

- Sizes 2 to 32 circuits
- Polarized
- Friction lock

Reference Information

Product Specification: PS-99020-0001
 Packaging: Bag
 Mates With: 90120, 90121 and 90136
 Use With: 90119
 Designed In: Inches

Electrical

Voltage: 350V
 Current: 3.0A max.
 Contact Resistance: 20mΩ max.
 Insulation Resistance: 1000 MΩ min.

Mechanical

Contact Retention to Housing: 15N min.
 Normal Force: 1N

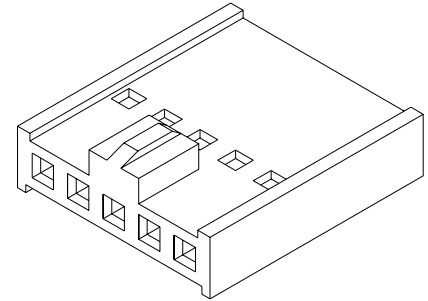
Physical

Housing: Black polyphenylene oxide, UL 94V-1
 Operating Temperature: -55 to +105°C



2.54mm (.100") Pitch C-Grid III™ Crimp Connector Housing

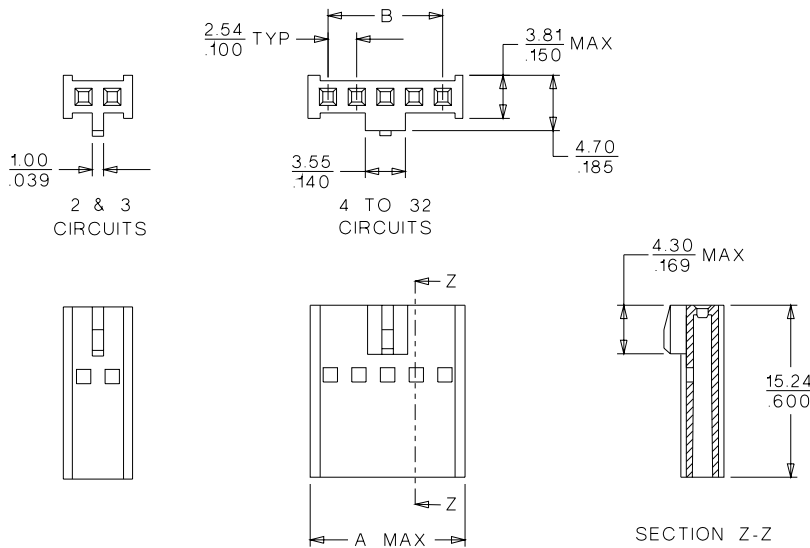
90156 Single Row



C
2.54mm (.100") Pitch

CATALOG DRAWING (FOR REFERENCE ONLY)

Not For Use With Molex SL™ Components



Delivered on a carrier with 20 pieces per strip.

Actual Size **Universal Polarizing Pin**
40713-1
 Order No. 15-04-0292

ORDERING INFORMATION AND DIMENSIONS

Circuits	Order No.	Dimension	
		A	B
2	90156-0142	6.14 (.242)	2.54 (.100)
3	90156-0143	8.68 (.342)	5.08 (.200)
4	90156-0144	11.22 (.442)	7.62 (.300)
5	90156-0145	13.76 (.542)	10.16 (.400)
6	90156-0146	16.30 (.642)	12.70 (.500)
7	90156-0147	18.84 (.742)	15.24 (.600)
8	90156-0148	21.38 (.842)	17.78 (.700)
9	90156-0149	23.92 (.942)	20.32 (.800)
10	90156-0150	26.46 (1.042)	22.86 (.900)
12	90156-0152	31.54 (1.242)	27.94 (1.100)

Circuits	Order No.	Dimension	
		A	B
13	90156-0153	34.08 (1.342)	30.48 (1.200)
14	90156-0154	36.62 (1.442)	33.02 (1.300)
15	90156-0155	39.16 (1.542)	35.56 (1.400)
16	90156-0156	41.70 (1.642)	38.10 (1.500)
18	90156-0158	46.78 (1.842)	43.18 (1.700)
20	90156-0160	51.86 (2.042)	48.26 (1.900)
22	90156-0162	56.94 (2.242)	53.34 (2.100)
25	90156-0165	64.56 (2.542)	60.96 (2.400)
30	90156-0170	77.26 (3.042)	73.66 (2.900)
32	90156-0172	82.34 (3.242)	78.74 (3.100)

For other available circuit sizes contact Molex