

FEATURES AND SPECIFICATIONS

Features and Benefits

- Sizes 2 to 32 circuits
- 2 and 4 polarizing buttons
- Stackable in 2 directions

Reference Information

Product Specification: PS-99020-0001
 Packaging: Bag
 Mates With: 90120, 90121 and 90136
 Use With: 90119
 Designed In: Inches

Electrical

Voltage: 350V
 Current: 3.0A
 Contact Resistance: 20mΩ max.
 Insulation Resistance: 1000 MΩ min.

Mechanical

Contact Retention to Housing: 15N min.
 Normal Force: 1N

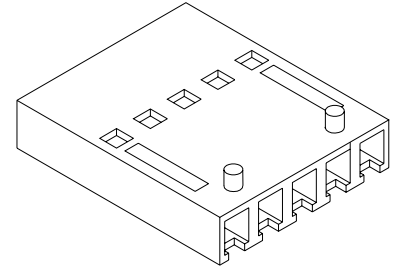
Physical

Housing: Black polyphenylene oxide, UL 94V-1
 Operating Temperature: -55 to +105°C
 Polarization: Use 2 button version only with single row adapter and use 2 and 4 button versions with dual row adapter



2.54mm (.100") Pitch C-Grid III® Modular Crimp Connector Housing

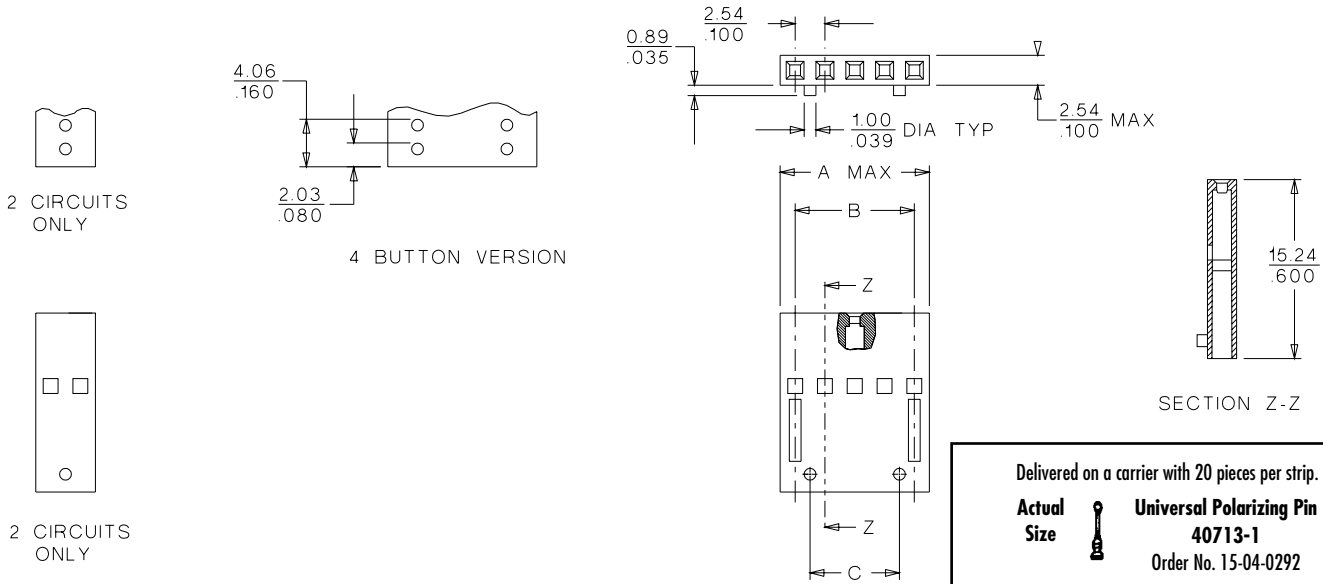
90123 Single Row



2.54mm (.100") Pitch

CATALOG DRAWING (FOR REFERENCE ONLY)

Not For Use With Molex SL™ Components



ORDERING INFORMATION AND DIMENSIONS

Circuits	Order No.		Dimension		
	2 Buttons	4 Buttons	A	B	C
2	90123-0102	90123-0202*	5.08 (.200)	2.54 (.100)	
3	90123-0103	90123-0203	7.62 (.300)	5.08 (.200)	2.54 (.100)
4	90123-0104	90123-0204	10.16 (.400)	7.62 (.300)	5.08 (.200)
5	90123-0105	90123-0205	12.70 (.500)	10.16 (.400)	7.62 (.300)
6	90123-0106	90123-0206	15.24 (.600)	12.70 (.500)	10.16 (.400)
7	90123-0107	90123-0207	17.78 (.700)	15.24 (.600)	12.70 (.500)
8	90123-0108	90123-0208	20.32 (.800)	17.78 (.700)	15.24 (.600)
9	90123-0109	90123-0209	22.86 (.900)	20.32 (.800)	17.78 (.700)
10	90123-0110	90123-0210	25.40 (1.000)	22.86 (.900)	20.32 (.800)
12	90123-0112	90123-0212	30.38 (1.200)	27.94 (1.100)	25.40 (1.000)
13	90123-0113	90123-0213	33.02 (1.300)	30.48 (1.200)	27.94 (1.100)
15	90123-0115	90123-0215	38.10 (1.500)	35.56 (1.400)	33.02 (1.300)
18	90123-0118	90123-0218	45.72 (1.800)	43.18 (1.700)	40.64 (1.600)
19	90123-0119	90123-0219	48.26 (1.900)	45.72 (1.800)	43.18 (1.700)
20	90123-0120	90123-0220	50.80 (2.000)	48.26 (1.900)	45.72 (1.800)
24	90123-0124	90123-0224	60.96 (2.400)	58.42 (2.300)	55.88 (2.200)
25	90123-0125	90123-0225	63.50 (2.500)	60.96 (2.400)	58.42 (2.300)
32	90123-0132	90123-0232	81.28 (3.200)	78.74 (3.100)	76.20 (3.000)

* 2 buttons only
 For other available circuit sizes contact Molex