

Copyright FCI.



FCIconnect.com

1 | 2

3 |

4

PRODUCT NUMBER
20020008-XXXXXXLF

20020008 -

PITCH

C: 3.50 mm
D: 3.81 mm
G: 5.00 mm
H: 5.08 mm

POLES

02: 2 POLES
03: 3 POLES
04: 4 POLES

24: 24 POLES

LF: DENOTED RoHS COMPATIBLE

1 : STANDARD PRODUCT
W/ BOX PACKING

SCREW CODE

CODE	SCREW TYPE	AVAILABILITY
A	-/+	ON REQUEST ONLY
B	-	STANDARD

HOUSING CODE

CODE	COLOR	AVAILABILITY
1	GREEN(RAL 6018/T)	STANDARD
2	BLACK	ON REQUEST ONLY
3	GREY(RAL 7004/P)	ON REQUEST ONLY
4	BLUE(RAL 5015/A)	ON REQUEST ONLY

PROPERTY TABLE				
FCI SERIES NAME	02-350	02-381	02-500	02-508
PITCH (mm)	3.50	3.81	5.00	5.08
VOLTAGE RATING (VAC)	300	300	300	300
CURRENT RATING (A)	cULus	8	8	12
	VDE	10	10	NA
APPLICABLE WIRE RANGE (AWG)	1-WIRE	16~28	16~28	12~24
	2-WIRE	20	20	18
WIRE CROSS SECTION (mm ²)	SOLID	1-WIRE	1.5	1.5
		2-WIRE	0.5	0.5
	STRANDED	1-WIRE	1.5	1.5
		2-WIRE	0.75	0.75
OPENING CONTACT HOUSING(mm ²)	2.8x1.7	2.8x1.7	2.6x3.3	2.6x3.3
WIRE STRIP LENGTH(mm)	6~7	6~7	6~7	6~7
TORQUE +/-10% (N-m/Lb-in)	0.19/1.7	0.19/1.7	0.4/3.5	0.4/3.5
WITHSTANDING VOLTAGE (kV)	SCREW	M2x0.4	M2x0.4	M3x0.5
	cULus	1.6	1.6	1.6
VDE	2.5	2.5	NA	
OPERATING TEMP. (°C)	-40~+115	-40~+115	-40~+115	-40~+115
POLES AVAILABLE	02~24	02~24	02~24	02~24
SAFETY CERTIFICATE				

NOTES:

- MATERIALS
 - 1-1 HOUSING: THERMALPLASTIC RESIN, UL 94V-0 RATED.
 - 1-2 SCREW: STEEL, ZINC PLATED.
 - 1-3 CLAMP: COPPER ALLOY, NICKEL PLATED.
 - 1-4 TERMINAL: COPPER ALLOY, TIN PLATED.
- PRODUCT SPECIFICATION REFER TO FCI GS-12-625.
- PRODUCT PACKING SPECIFICATION REFER TO FCI GS-14-1394.
- FCI, SAFETY CERTIFICATE LOGO AND SERIES NAME TO BE SHOWN ON PRODUCT SURFACE.
- THE PRODUCTS WHERE THE PART NUMBER END IN "LF" MEET THE EUROPEAN UNION DIRECTIVE AND OTHER COUNTRY REGULATIONS AS DESCRIBED IN GS-22-008.

mat'l. code	surface ASME Y14.5	tolerance ASME Y14.5	projection	product family
ltr	ecn no	dr	dqte	tolerances unless otherwise specified
A	0609-0203	BF	062509	X.±0.5
B	T09-1148	BF	111709	X.X±0.3
C	T09-1152	BF	112609	X'±1"
D	T10-0042	WL	030310	X.Xx±0.1
E	T10-0082	WL	080510	
F	T10-0172	WL	102010	
G	T11-0013	WL	040811	
sheet index	revision	G	G	G
	sheet	1	2	3

form: A4mmXLc

1 |

2 |

PDM: Rev:G 3 | STATUS Released | Printed: Apr 21, 2011 4

Copyright FCI.

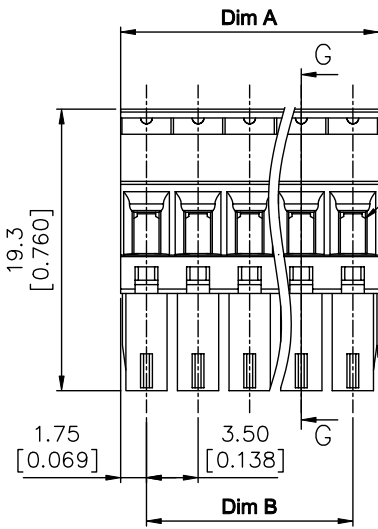
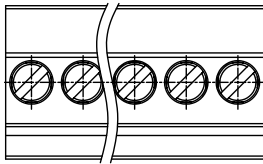


1 | 2

3

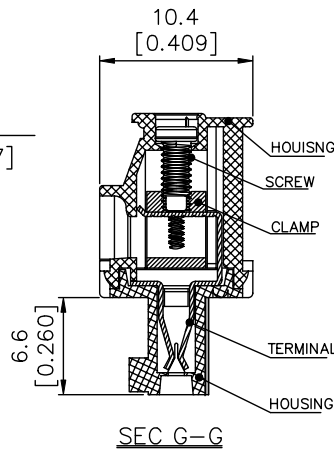
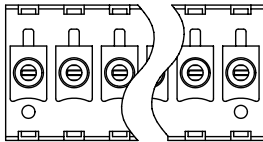
4

PRODUCT NUMBER	SERIES NAME	PITCH
20020008-CXXXXXXLF	02-350	3.50 mm



□2.8x1.7
[0.110x0.067]

2p to 6p with wedge, above 7p
without wedge (including 7p)



N = Number of poles
Dim A = $N \times 3.5$ [0.138]
Dim B = $(N-1) \times 3.5$ [0.138]

POLES	Dim A	Dim B
2-6p	± 0.15 [0.006]	
7-12p	± 0.20 [0.008]	
13-18p	± 0.25 [0.010]	
19-24p	± 0.30 [0.012]	

mat'l. code	surface ASME Y14.5	tolerance ASME Y14.5	projection	product family
ltr	ecn no	dr	date	TERMINAL BLOCK
g	tolerances unless otherwise specified			title
	angles	X.±0.5	MM	TERMINAL BLOCK
		X.X±0.3	[INCH]	Pluggable plug, hook entry side
	X'±1'	X.XX±0.1	scale	dwg no
	dr	BEER FU	062509	sheet 2 of 5
	enr	BEER FU	062509	size
	chr	GARY HSIEH	062509	20020008
	appd	JOSEPH HSIA	062509	A4
sheet index	revision sheet			type
				CUSTOMER Drawing

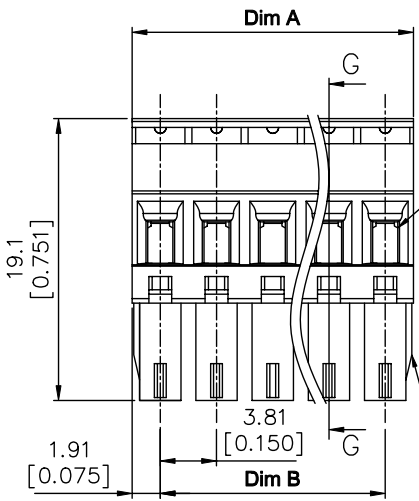
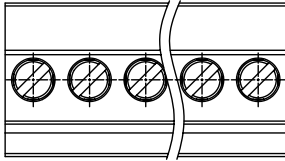
form: A4mmXLc

1

2

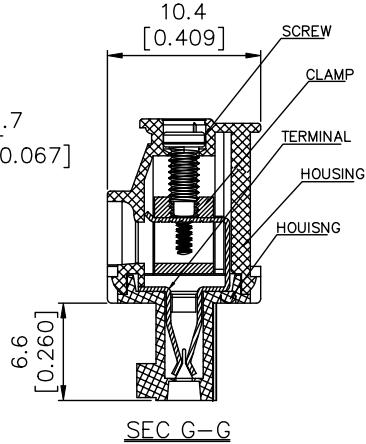
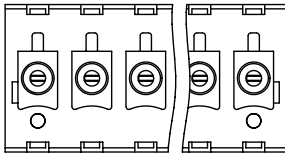
PDM: Rev:G 3 | STATUS Released | Printed: Apr 21, 2011 4

PRODUCT NUMBER	SERIES NAME	PITCH
20020008-DXXXXXL	02-381	3.81 mm



□2.8x1.7
[0.110*0.067]

2p to 6p with wedge, above 7p
without wedge (including 7p)



N = Number of poles
Dim A = N x 3.81 [0.150]
Dim B = (N-1) x 3.81 [0.150]

POLES	Dim A	Dim B
2-6p	±0.15 [0.006]	
7-12p	±0.20 [0.008]	
13-18p	±0.25 [0.010]	
19-24p	±0.30 [0.012]	

mat'l. code	surface ASME Y14.5	tolerance ASME Y14.5	projection	product family
ltr	ecn no	dr	date	TERMINAL BLOCK
g	tolerances unless otherwise specified			title
	angles	X.±0.5	MM	TERMINAL BLOCK
		X.X±0.3	[INCH]	Pluggable plug, hook entry side
	X'±1'	X.XX±0.1	scale	dwg no
	dr	BEER FU	062509	sheet 3 of 5
	enr	BEER FU	062509	size
	chr	GARY HSIEH	062509	20020008
	appd	JOSEPH HSIA	062509	A4
sheet index	revision sheet			type
				CUSTOMER Drawing

Copyright FCI.



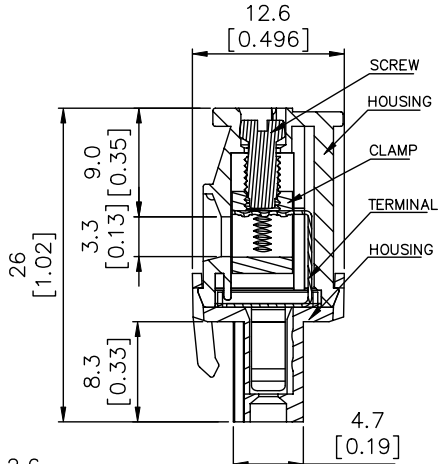
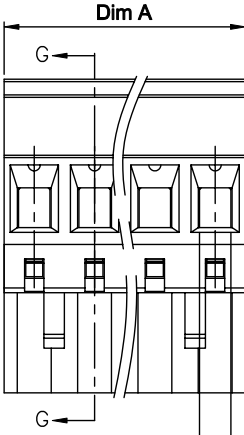
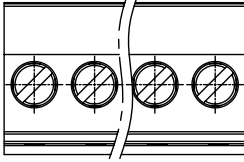
FCIconnect.com

1 | 2

3

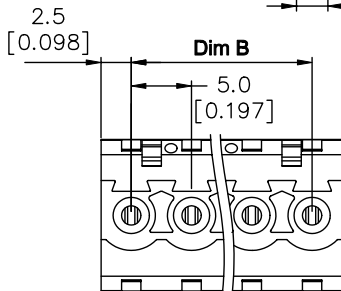
4

PRODUCT NUMBER	SERIES NAME	PITCH
20020008-GXXXXXL	02-500	5.00 mm



N = Number of poles
 Dim A = $N \times 5.0 [0.197]$
 Dim B = $(N-1) \times 5.0 [0.197]$

POLES	Dim A	Dim B
2-6p	$\pm 0.15 [0.006]$	
7-12p	$\pm 0.25 [0.010]$	
13-18p	$\pm 0.30 [0.012]$	
19-24p	$\pm 0.40 [0.016]$	



mat'l. code	surface ASME Y14.5	tolerance ASME Y14.5	projection	product family
ltr	ecn no	dr	date	TERMINAL BLOCK
g	tolerances unless otherwise specified			title
	angles	MM	[INCH]	TERMINAL BLOCK
	X \pm 1°	X. \pm 0.5	scale	Pluggable plug, hook entry side
		X.X \pm 0.3		dwg no
	dr	BEER FU	062509	sheet 4 of 5
	enr	BEER FU	062509	size
	chr	GARY HSIEH	062509	20020008
	appd	JOSEPH HSIA	062509	A4
sheet index	revision sheet			type
				CUSTOMER Drawing

form: A4mmXLc

1

2

PDM: Rev:G 3 | STATUS Released | Printed: Apr 21, 2011 4

Copyright FCI.



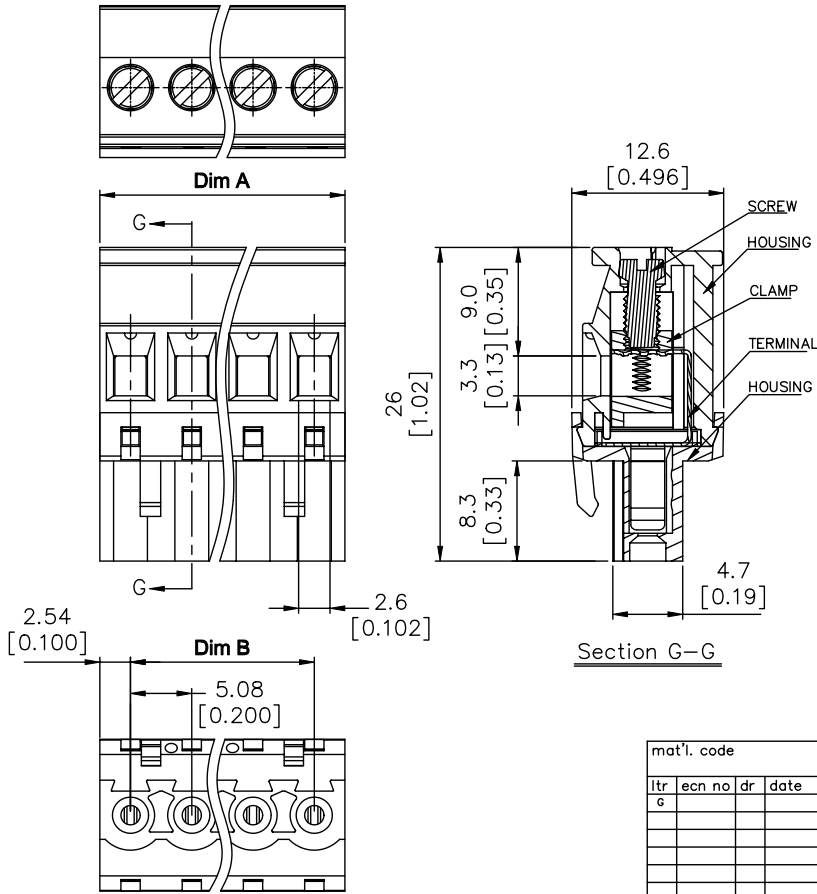
FCIconnect.com

1 | 2

3

4

PRODUCT NUMBER	SERIES NAME	PITCH
20020008-HXXXXXXLF	02-508	5.08 mm



N = Number of poles
 Dim A = N x 5.08 [0.200]
 Dim B = (N-1) x 5.08 [0.200]

POLES	Dim A	Dim B
2-6p	±0.15 [0.006]	
7-12p	±0.25 [0.010]	
13-18p	±0.30 [0.012]	
19-24p	±0.40 [0.016]	

mat'l. code	surface ASME Y14.5 ✓	tolerance ASME Y14.5	projection	product family
ltr	ecn no	dr	date	TERMINAL BLOCK
g	tolerances unless otherwise specified			title
	angles	MM	[INCH]	TERMINAL BLOCK
	X°±1'	X.X±0.5	X.X±0.3	Pluggable plug, hook entry side
		X.Xx±0.1	scale	dwg no
	dr	BEER FU	062509	sheet 5 of 5
	enr	BEER FU	062509	size
	chr	GARY HSIEH	062509	20020008
	appd	JOSEPH HSIA	062509	A4
sheet index	revision sheet			type
				CUSTOMER Drawing

form: A4mmXLc

1

2

PDM: Rev:G 3 | STATUS Released | Printed: Apr 21, 2011 4