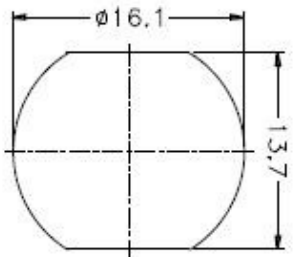
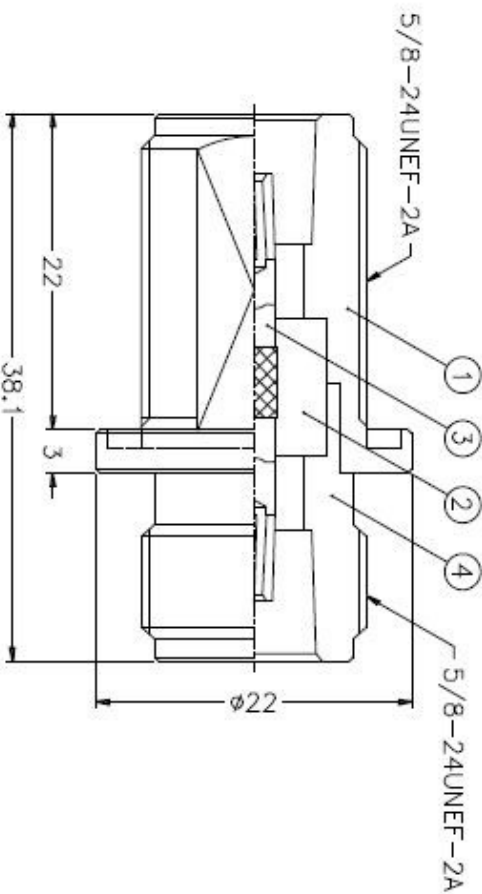
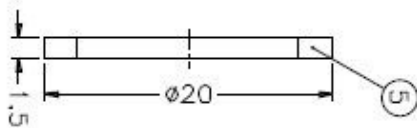
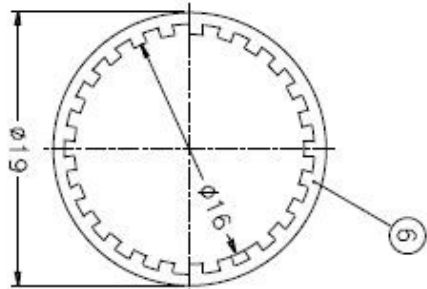
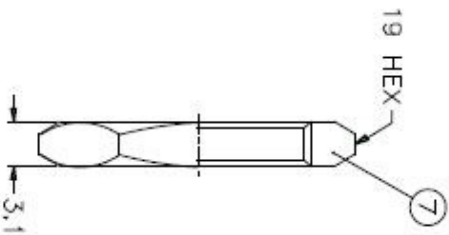


1	2	3	4	5	6	7	8
ISS ZONE		REVISIONS					
		DESCRIPTION \ PER REQUEST \ DATE					



RECOMMENDED MOUNTING HOLE



- NOTES: FINISH (PLATING THICKNESS IN MICRO-INCHES)
1. BRASS PER QQ-B-626
  2. BRASS PER QQ-B-613
  3. NICKEL PL 100 MIN. THICK OVER COPPER STRIKE
  4. PHOSPHOR BRONZE PER QQ-B-750
  5. GOLD PL 3 MIN. THICK OVER NICKEL PL 100 MIN. THICK OVER COPPER STRIKE
  6. PTFE MIL-P-19468

1. MAX. PANEL THICKNESS=3.2mm

7	HEX NUT	NOTE 1	NOTE 3	1	HN19-5/8-24X31				
6	LOCK WASHER	NOTE 2	NOTE 3	1	LW-19/16X06				
5	GASKET	SILICONE	RED	1	GS-20/16X15				
4	BODY	NOTE 1	NOTE 3	1	N7910-4				
3	CONTACT PIN	NOTE 4	NOTE 3	1	N7900-3				
2	INSULATOR	NOTE 6	NATURAL	1	N7900-2T-50-B				
1	HOUSING	NOTE 1	NOTE 3	1	N7910-1				

UNLESS OTHERWISE SPECIFIED DIMENSIONS ARE IN MILLIMETERS TOLERANCES

0.5-6	±0.2
6-30	±0.4
30-120	±0.5
120-315	±1
315-1000	±1.6
1000-2000	±2.4

PART NO. N7471A1-NT3G-50

APPROVED

DATE 10-11-01\*

CHECKED

DATE 10-11-01\*

DRAWN

DATE 10-11-01\*

**Amphenol**

TITLE N FEMALE TO FEMALE BULKHEAD ADAPTOR

DRAWING NO. KJ-N7471A1-NT3G-50

ITEM NO.

1 2 3 4 5 6 7 8