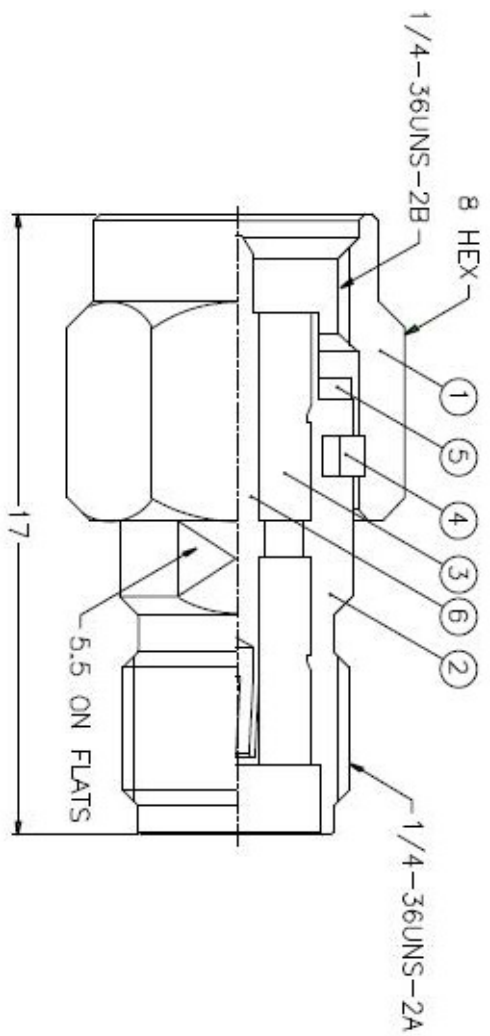


1	REVISIONS
2	DESCRIPTION \ PER REQUEST \ DATE
3	
4	
5	
6	
7	
8	



NOTES: FINISH (PLATING THICKNESS IN MICRO-INCHES)

1. BRASS PER QQ-B-628
2. GOLD PL. 3 MIN. THICK OVER NICKEL PL. 100 MIN. THICK OVER COPPER STRIKE
3. BERYLLIUM COPPER PER QQ-C-530
4. GOLD PL. 50 MIN. THICK OVER NICKEL PL. 100 MIN. THICK OVER COPPER STRIKE
5. PTFE MIL-P-19459

6	CONTACT PIN	NOTE 3	NOTE 4	1	SMA5071A1-6
5	GASKET	SILICONE	RED	1	GS-6/43X06
4	RETAINER RING	NOTE 3	NATURAL	1	SMA5000-4-B
3	INSULATOR	NOTE 5	NATURAL	2	SMA5071A1-3T-50
2	BODY	NOTE 1	NOTE 2	1	SMA5071A1-2
1	SHELL	NOTE 1	NOTE 2	1	SMA5000-1-C

DIMENSIONS ARE IN MILLIMETERS  
UNLESS OTHERWISE SPECIFIED  
TOLERANCES

0.5-6	= ±0.2
6-30	= ±0.4
30-120	= ±0.6
120-315	= ±1
315-1000	= ±1.6
1000-2000	= ±2.4

PART NO.	SMA5071A1-3GT50G-50
APPROVED	DATE
CHECKED	DATE
DRAWN	DATE
SCALE	5/1
ISSUE	A
FILE NO.	

TITLE	SMA MALE TO FEMALE ADAPTOR
DRAWING NO.	KJ-SMA5071A1-3GT50G-50
TDMA NO.	

1 2 3 4 5 6 7 8