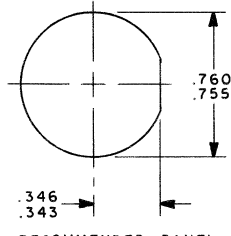
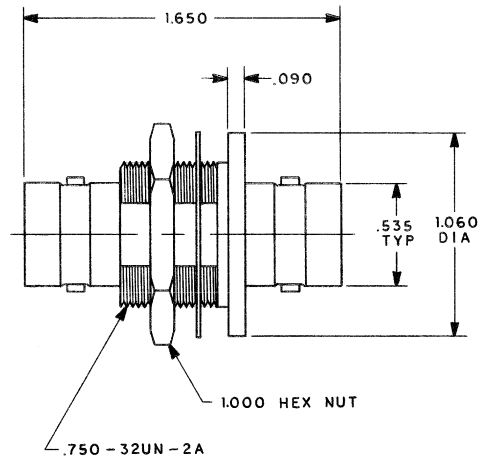
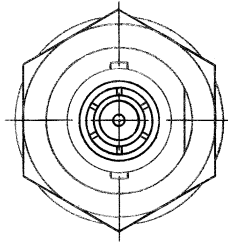


DATA CONTAINED IN THIS DOCUMENT IS PROPRIETARY TO TROMPETER ELECTRONICS INC. AND SHALL NOT BE DISCLOSED, COPIED OR USED FOR PROCUREMENT OR MANUFACTURE WITHOUT EXPRESS WRITTEN PERMISSION.

REVISIONS			3005-0460		SH 1
REV	EO	DESCRIPTION	DWN	APPROVED	DATE

INCH	MM
.005	0.13
.090	2.29
.343	8.71
.346	8.79
.350	8.89
.535	13.59
.750	19.05
.755	19.18
.760	19.30
1.000	25.40
1.060	26.92
1.650	41.91



RECOMMENDED PANEL CUTOUT  
SCALE: 2/1

4. CONCENTRIC TWINAX/TRIAX TRC TYPE NONINSULATED BULKHEAD MOUNT FEEDTHRU JACK
3. MAX PANEL THK .350
2. FINISH: TFS-1A (NICKEL)
1. ALL DIM ARE IN INCHES

QTY	DESCRIPTION	PART NUMBER	ITEM
TOL UNLESS SPECIFIED .XX ± .XXX ± 005 .XXXX ± ANGLES ±		<b>TROMPETER ELECTRONICS, INC.</b>	
DWN	RAG 4/9/86		
CHK	FS 9-20-86	14949	DRAWING NO.
ENGR	9-25-86	3005-0460	REV
APPR	9-26-86	SCALE 2/1	DATE 9-29-86 SHEET 1 OF 2

BISHOP GRAPHICS/ACUPRESS  
REORDER NO. A29010