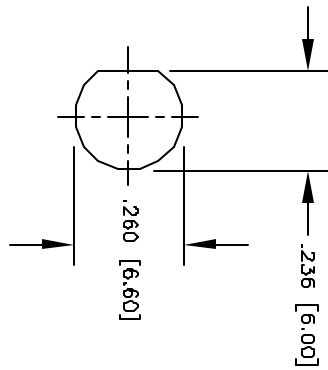
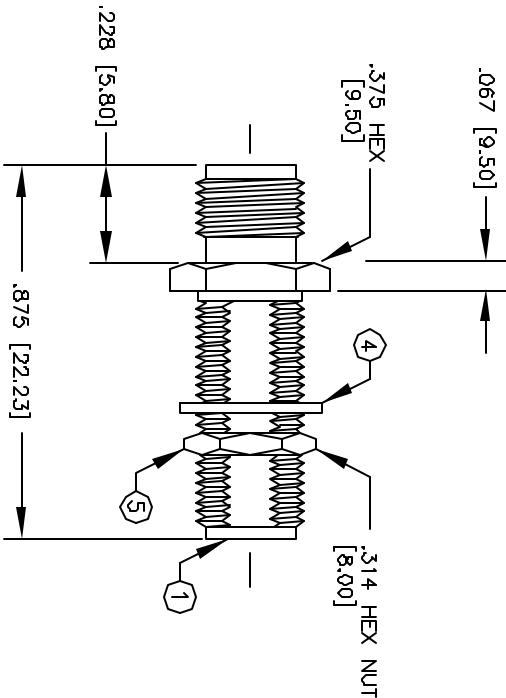


© COPYRIGHT 1997 BY SPC TECHNOLOGY. ALL RIGHTS RESERVED. NO PORTION OF THIS PUBLICATION, WHETHER IN WHOLE OR IN PART CAN BE REPRODUCED WITHOUT THE EXPRESS WRITTEN CONSENT OF SPC TECHNOLOGY.

REVISIONS		DOC. NO. SPC-FD05, Total Pages: 2	Effective: 3/3/97, DCP Nos: 103	Supersedes DCP No: 97				
DCP #	REV	DESCRIPTION	DRAWN	DATE	CHECKD	DATE	APPRVD	DATE
18	A	RELEASED	D.J.C.	4/2/97	J.C.	4/8/97	B.B.	4/16/97
428	B	CHANGE ELECTRONIC FILE NAME	DJC	2/12/98	JC	2/17/98	JC	2/17/98



SUGGESTED MOUNTING CONFIGURATION  
 .251 [6.40] MAXIMUM PANEL THICKNESS

**SPECIFICATIONS:**

IMPEDANCE: 50 OHMS  
 WORKING VOLTAGE: 335 VRMS @ SEA LEVEL  
 FREQUENCY RANGE: 0-12.4 GHz

ITEM	DESCRIPTION	QTY	MATERIAL	FINISH
5	HEX NUT	1	BRASS	GOLD
4	LOCK WASHER	1	BRASS	GOLD
3	DIELECTRIC	2	TEFLON	NONE
2	CONTACT	1	BERYLLIUM COPPER	GOLD
1	BODY	1	BRASS	GOLD

**DISCLAIMER**  
 ALL STATEMENTS AND TECHNICAL INFORMATION CONTAINED HEREIN ARE BASED UPON INFORMATION AND/OR TESTS WE BELIEVE TO BE ACCURATE AND RELIABLE. SINCE CONDITIONS OF USE ARE NOT WITHIN OUR CONTROL, THE USER SHALL DETERMINE THE SUITABILITY OF THE PRODUCT FOR THE INTENDED USE AND ASSUME ALL RISK AND LIABILITY WHATSOEVER IN CONNECTION THEREWITH.

**SPC TECHNOLOGY**  
 CERTIFIED, LLC 60940-4199

DRAWING TITLE: <b>SMA FEMALE TO SMA FEMALE BULKHEAD ADAPTER</b>		SCALE: NTS	
DRAWN BY: DANIEL CAREY	DATE: 4/2/97	SIZE A	DWG. NO. 8589-0853
CHECKED BY: JOHN COLE	DATE: 4/8/97	CAD FILE	16N2735.DWG
APPROVED BY: BRETT BRAATZ	DATE: 4/16/97	U.O.M.: INCHES [mm]	SHEET: 1 OF 1

DIMENSIONS ARE FOR REFERENCE PURPOSES ONLY.