

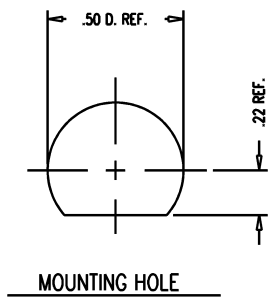
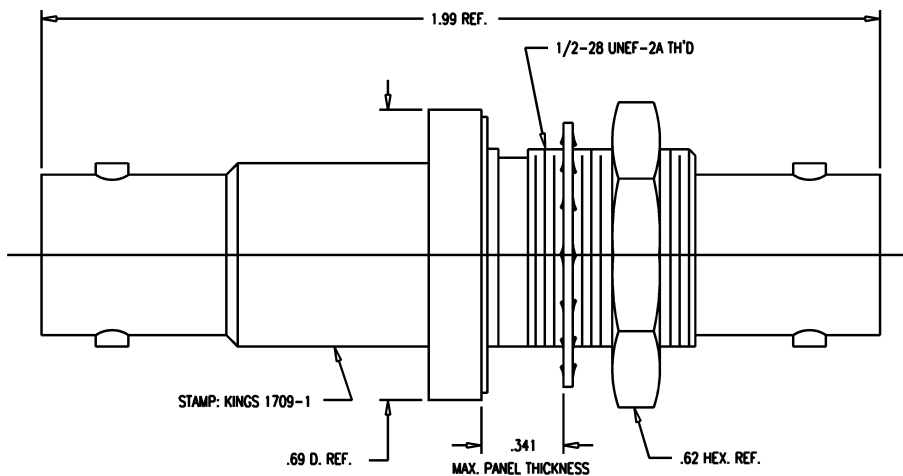
DASH NO.	M CODE	MADE FROM
----------	--------	-----------

GSD

1709-1

REVISIONS	
ISSUE	CHANGES
3	CN 36706 C REDRAWN KH 11/30/95

KAM6256



- NOTES:
1. INTERFACE PER MIL-STD-348, FIG. 314-1.
 2. MATERIALS:
GASKET: SILICONE RUBBER, ZZ-R-765
INSULATOR: TEFLON, ASTM-D-4894
LOCKWASHER: PHOSPHOR BRONZE, ASTM-B-103
ALL OTHER METAL PARTS: BRASS, ASTM-B16
 3. FINISHES:
CENTER CONTACT: GOLD PLATE PER MIL-G-45204
ALL OTHER METAL PARTS: KINGS TARNISH RESISTANT NICKEL FINISH (TR-5)
 4. ELECTRICAL CHARACTERISTICS:
NOMINAL IMPEDANCE: NON-CONSTANT
VOLTAGE RATING: 3500 VRMS
5000 VDC

SCALE	4:1
APPROX SURFACE AREA	
USED ON	
REF:	
ADPT M-M, BKHD, SHV	
DRAWN	KH 04/30/92
DESIGN	AR 08/01/92
APPR.	DATE
 ELECTRONICS CO., INC. TUCKAHOE, NEW YORK 10707	
1709-1	

GSD