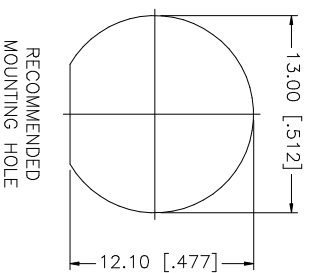
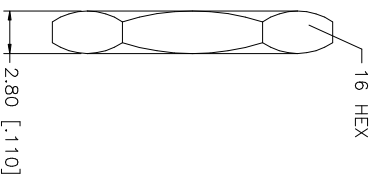
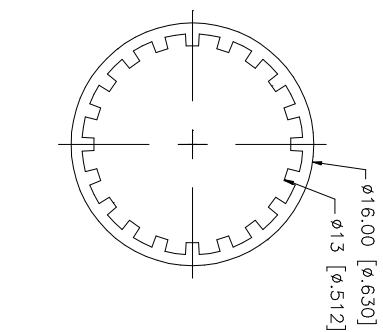
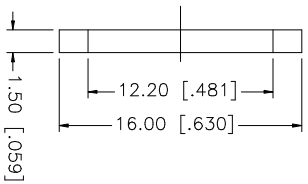
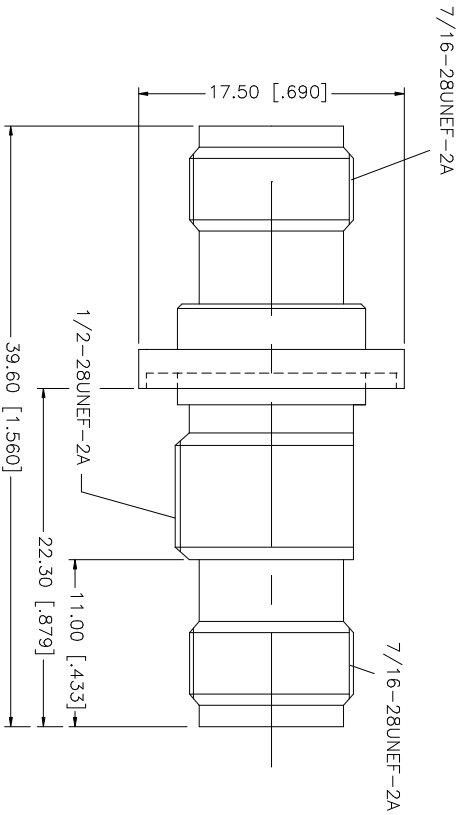


REV.	DATE	DESCRIPTION
NC	05/25/04	INITIAL RELEASE



9												
8												
7												
6	HEX NUT	BRASS	NICKEL	1								
5	LOCK WASHER	BRASS	NICKEL	1								
4	GASKET	RUBBER	RED	1								
3	CONTACT PIN	PHOS. BRONZE	GOLD	1								
2	INSULATOR	DELFIN	NATURAL	1								
1	BODY	BRASS	NICKEL	1								
DESCRIPTION		MATERIAL	FINISH	QTY	DO NOT SCALE DRAWING		CAD FILE		DWG. NO.	REV.	SIZE	SCALE
							C:/122/122340.DWG		122340.DWG	NC	A	NA
<p>UNLESS OTHERWISE SPECIFIED DIMENSIONS ARE IN MILLIMETERS. DIMENSIONS IN [] ARE IN INCHES AND FOR CUSTOMER REFERENCE ONLY.</p> <p>UNLESS OTHERWISE SPECIFIED TOLERANCES FOR MILLIMETERS ARE:</p> <p>0.5 - 8mm ± 0.20mm 8 - 30mm ± 0.40mm 30 - 120mm ± 0.50mm</p> <p>UNLESS OTHERWISE SPECIFIED TOLERANCES FOR INCHES ARE:</p> <p>.020 - .315 = ± 0.007" .315 - 1.180 = ± 0.015" 1.180 - 4.724 = ± 0.020"</p>												
APPROVALS			DATE									
DRAWN G.R.S.			05/25/04									
CHECKED												
ISSUED												
SHEET 1 OF 1												
<p>PART DESCRIPTION</p> <p>TNC FEMALE TO FEMALE BULKHEAD ADAPTOR</p> <p>PART NO. 122340</p>												
<p>Amphenol Connex</p>												