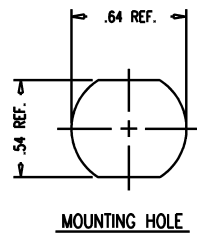
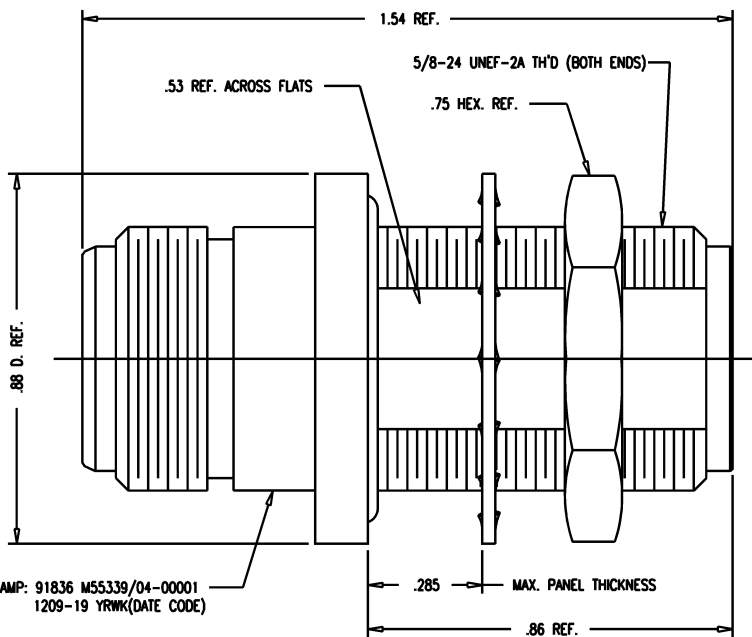


DASH NO.	M CODE	MADE FROM
----------	--------	-----------

GSD

M55339/04-00001

REVISIONS	
ISSUE	CHANGES
4	CN 32393 A KH 07/31/90
5	CN 35618 D KH 01/09/95
6	CN 37573 C JW 03/17/98



STAMP: 91836 M55339/04-00001
1209-19 YRWM(DATE CODE)

- NOTES:
- INTERFACES PER MIL-STD-348, FIG. 3042.
 - MATERIALS:
INSULATORS-TEFLON, ASTM-D-1457
O-RINGS-SILICONE RUBBER, ZZ-R-765
LOCKWASHER-PHOSPHOR BRONZE, QQ-B-750
CENTER CONTACT-BER. COP., ASTM-B-196
ALL OTHER METAL PARTS-BRASS, QQ-B-626
 - FINISHES:
CENTER CONTACTS-GOLD PLATE PER MIL-G-45204
ALL OTHER METAL PARTS-SILVER PLATE PER QQ-S-365
 - ELECTRIAL CHARACTERISTICS:
NOMINAL IMPEDANCE-50 OHMS
FREQUENCY RANGE-DC TO 11 GHZ
WORKING VOLTAGE-1000 VRMS

GSD

120919S	
SCALE	4:1
APPROX SURFACE AREA	1209-19
USED ON	
REF:	N BULKHEAD ADAPTER PRESSURIZED (F-F)
DRAWN	KH
DATE	07/31/90
DESIGN	AT
DATE	08/01/90
APPR.	
 KINGS ELECTRONICS CO., INC. TUCKAHOE, NEW YORK 10707	
M55339/04-00001	