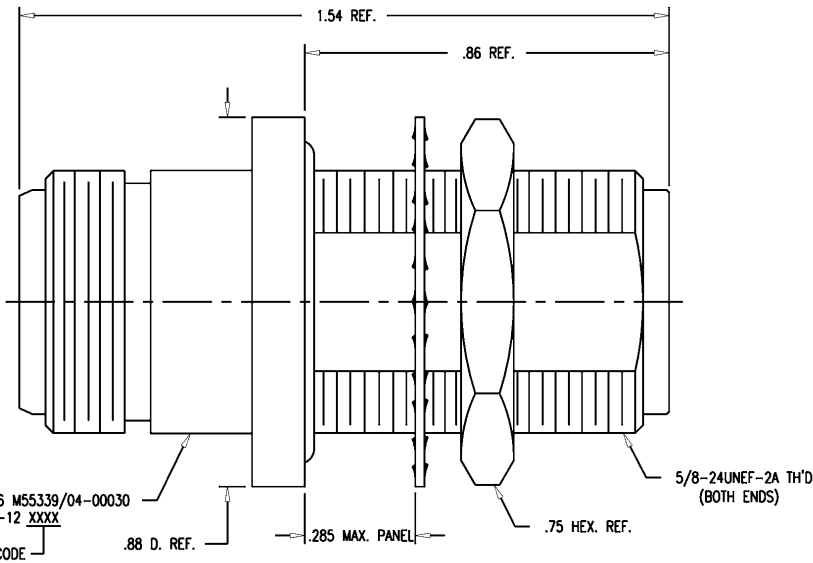


DASH NO.	M CODE	MADE FROM
----------	--------	-----------

GSD

M55339/04-00030

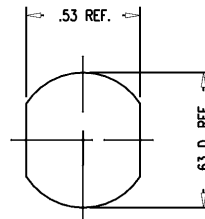
REVISIONS	
ISSUE	CHANGES
8	CN 33402 E REDRAWN WJM 10/01/91
9	CN 35618 D KH 01/09/95



STAMP: 91836 M55339/04-00030
1209-12 XXXX
DATE CODE

NOTES:

- INTERFACES PER MIL-STD-348, FIG. 304-2.
- MATERIALS:
CENTER CONTACT: BER. COOPER, ASTM-B-196
O-RING: SYNTHETIC RUBBER, MIL-P-25732
LOCKWASHER: PHOSPHOR BRONZE, QQ-B-750
GLASS SEAL: CORNING (E.I.#10) GLASS BONDED TO C.R.S. BAND AND CENTER.
ALL OTHER METAL PARTS: BRASS, ASTM-B16
- FINISHES:
CENTER CONTACT: HARD GOLD PLATE, PER MIL-G-45204
ALL OTHER METAL PARTS: SILVER PLATE, PER QQ-S-365
- ELECTRICAL CHARACTERISTICS:
NOMINAL IMPEDANCE: 50 OHMS
WORKING VOLTAGE: 1000 VRMS
FREQUENCY RANGE: DC TO 11 GHz.
- ENVIRONMENTAL CHARACTERISTICS:
LEAKAGE RATE SHALL NOT EXCEED 10⁷ cc/SEC. OF TRACER GAS AT ATMOSPHERIC PRESSURE.



MOUNTING HOLE

SCALE	4:1
APPROX SURFACE AREA	
	1209-12
USED ON	
REF:	
ADAPTER, F-F, BULKHEAD, N (HERMETIC SEAL)	
DRAWN	WJM
DATE	10/01/91
DESIGN	MJB
DATE	10/11/91
APPR.	
DATE	

KINGS
ELECTRONICS CO., INC.
TUCKAHOE, NEW YORK 10707

M55339/04-00030

GSD

WJM1413