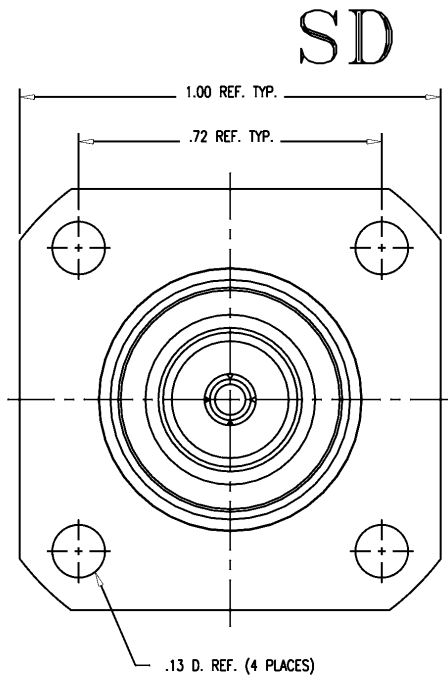
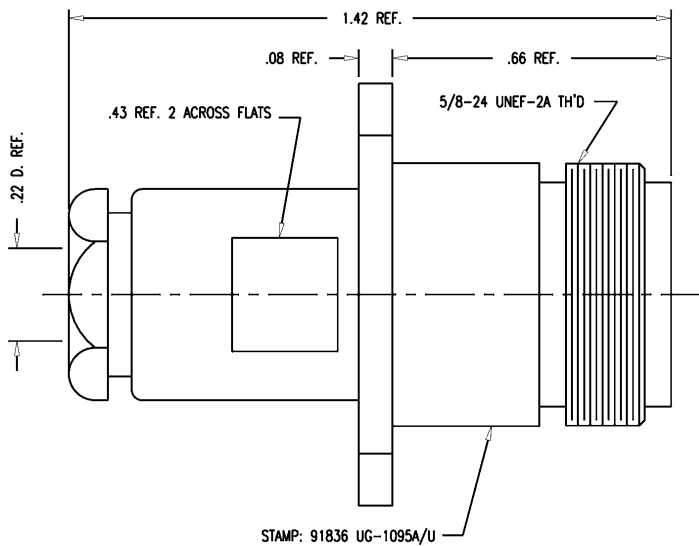


DASH NO.	M CODE	MADE FROM
----------	--------	-----------



NOTES:

- FOR USE WITH RG-58, 142 & 223 /U CABLES.
- FOR CABLING INSTRUCTIONS SEE CP-1015.
- MATERIALS:
 INSULATOR: TEFLON, ASTM-D-4894
 GASKET: SIL. RUB., ZZ-R-765
 CENTER CONTACT: BER. COP., ASTM-B-196
 ALL OTHER METAL PARTS: BRASS, ASTM-B16
- FINISHES:
 CENTER CONTACT: HARD GOLD PLT. PER MIL-C-45204
 ALL OTHER METAL PARTS: SILVER PLT. PER QQ-S-365
- ELECTRICAL CHARACTERISTICS:
 NOMINAL IMPEDANCE: 50 OHMS
 VOLTAGE RATING: 1000 VRMS
 FREQUENCY RANGE: DC TO 11 GHz

REVISIONS

ISSUE	CHANGES
8	CN 37285 D REDRAWN KH 03/11/97
9	CN 37388 C MRM 07/22/97

UG-1095B/U

G1095BC

SCALE 4:1	
APPROX SURFACE AREA	
KN-17-06	
USED ON	
REF:	
JACK, PANEL, N	
DRAWN MJB	DATE 03/04/86
DESIGN MJB	DATE 03/04/86
APPR.	DATE
KINGS ELECTRONICS CO., INC. TUCKAHOE, NEW YORK 10707	
UG-1095B/U	

SD