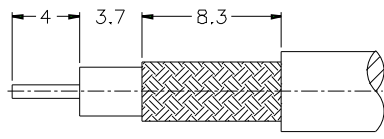
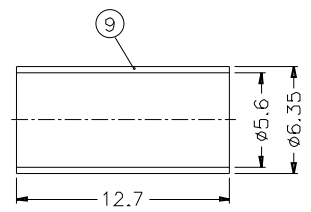
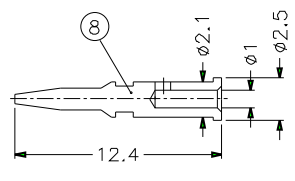
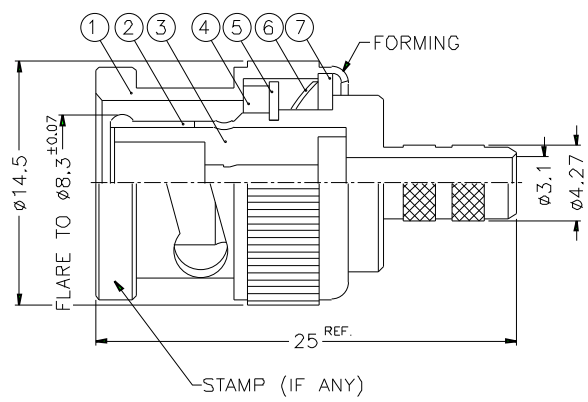


| ISS | | ZONE | | REVISIONS | | | |
|-----|--|------|--|------------------------------|--|--|--|
| | | | | DESCRIPTION\PER REQUEST\DATE | | | |
| | | | | | | | |



RECOMMENDED
CABLE STRIPPING DIM'S



- NOTES: FINISH (PLATING THICKNESS IN MICRO-INCHES)
1. BRASS PER QQ-B-626
 2. BRASS PER QQ-B-613
 3. NICKEL PL. 100 MIN. THICK OVER COPPER STRIKE
 4. NICKEL PL. 200 MIN. THICK OVER COPPER STRIKE
 5. GOLD PL. 3 MIN. THICK OVER NICKEL PL. 100 MIN. THICK OVER COPPER STRIKE
 6. JIS H 3250, C 2700

1. CRIMPED FERRULE
HEX CRIMP SIZE .213"
2. CRIMPED CONTACT PIN
HEX CRIMP SIZE .068"

| NO. | DESCRIPTION | MATERIAL | FINISH | Q'TY | DRAWING NO. | SCALE | 3/1 | ISSUE | A | FILE NO. |
|-----|---------------|----------|---------|------|-----------------|-------|-----|-------|---|----------|
| 9 | FERRULE | NOTE 6 | NOTE 3 | 1 | FR-635/56X127 | | | | | |
| 8 | CONTACT PIN | NOTE 1 | NOTE 5 | 1 | B50000-8-25/1 | | | | | |
| 7 | WASHER | NOTE 2 | NOTE 3 | 1 | WS-12B/9X0B | | | | | |
| 6 | SPRING | SK5 | NOTE 4 | 1 | B50000-6 | | | | | |
| 5 | RETAINER RING | NOTE 1 | NOTE 3 | 1 | B50000-5 | | | | | |
| 4 | GASKET | RUBBER | RED | 1 | GS-115/8X15 | | | | | |
| 3 | INSULATOR | DEL RIN | NATURAL | 1 | B50000-3-50-A | | | | | |
| 2 | BODY | NOTE 1 | NOTE 3 | 1 | B50000-2-427/31 | | | | | |
| 1 | SHELL | NOTE 1 | NOTE 3 | 1 | B50000-1-B | | | | | |

DIMENSIONS ARE IN MILLIMETERS
UNLESS OTHERWISE SPECIFIED
TOLERANCES
0.5-6 = ±0.2
6-30 = ±0.4
30-120 = ±0.6
120-315 = ±1
315-1000 = ±1.6
1000-2000 = ±2.4

| | | |
|----------|--------------------|-----------|
| PART NO. | B1121A1-ND3G-1A-50 | |
| APPROVED | DATE | 10-11-01' |
| CHECKED | DATE | 10-11-01' |
| DRAWN | DATE | 10-11-01' |

| | |
|-----------------|-------------------------|
| Amphenol | |
| TITLE | BNC CRIMP PLUG |
| DRAWING NO. | KJ-B1121A1-ND3G-223U-50 |
| ITEM NO. | |

| | | | | | | | |
|---|---|---|---|---|---|---|---|
| 1 | 2 | 3 | 4 | 5 | 6 | 7 | 8 |
|---|---|---|---|---|---|---|---|