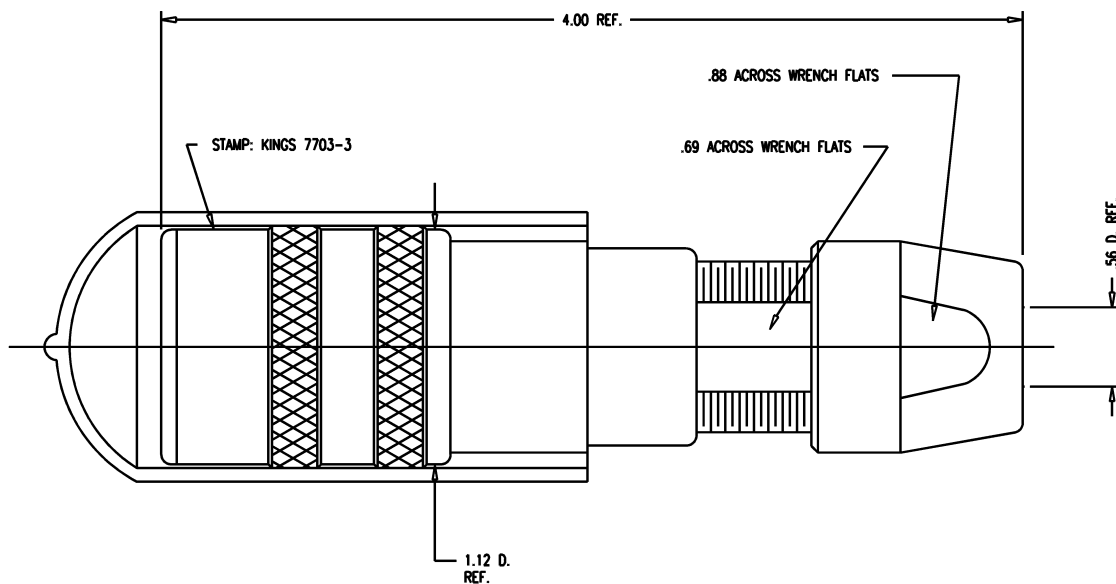


DASH NO.	M CODE	MADE FROM
----------	--------	-----------

GSD

7703-3

REVISIONS	
ISSUE	CHANGES
0	ER 35425 KH 04/10/95
1	CN 37238 D KH 02/03/97



NOTES:

- FOR USE WITH 740 CABLE GROUP.
- FOR CABLING INSTRUCTIONS SEE KAI-8010.
- FOR CABLE TRIMMING USE KTJ-303 AND KTD-303.
- FOR CRIMPING USE DIE SIZE KTH-2041.
- MATERIALS:
INSULATORS-TEFLON, ASTM-D-4894
GASKETS-SILICONE RUBBER, ZZ-R-765
CAP-VINYL
K-GRIP SLEEVE-COMMERCIAL BRONZE, ASTM-B-135
CENTER CONTACT } BER. COP., ASTM-B-196
OUTER CONTACT SPRING }
INSERT
ALL OTHER METAL PARTS-BRASS, ASTM-B16

- FINISHES:
CENTER CONTACT }
OUTER CONTACT SPRING } GOLD PLATE PER MIL-G-45204
NUTS }
COLLET } KINGS TARNISH RESISTANT FINISH (TR-5)
BODIES }
ALL OTHER METAL PARTS-SILVER PLATE PER QQ-S-365
- ELECTRICAL CHARACTERISTICS:
NOMINAL IMPEDANCE: 75 OHMS
FREQUENCY RANGE: DC-500 MHZ
VOLTAGE BREAKDOWN: CENTER CONDUCTOR/INNER GROUND: 1500 VRMS
INNER GROUND/OUTER GROUND: 500 VRMS

KAM5532

SCALE 2:1	
APPROX SURFACE AREA	
USED ON	
REF: KP-8020-740-400	
JK, TRI-LOC, SERIAL DIGITAL	
DRWNN KH	DATE 04/10/95
DESIGN DW	DATE 04/11/95
APPR.	DATE

KINGS
ELECTRONICS CO., INC.
TUCKAHOE, NEW YORK 10707

7703-3

GSD