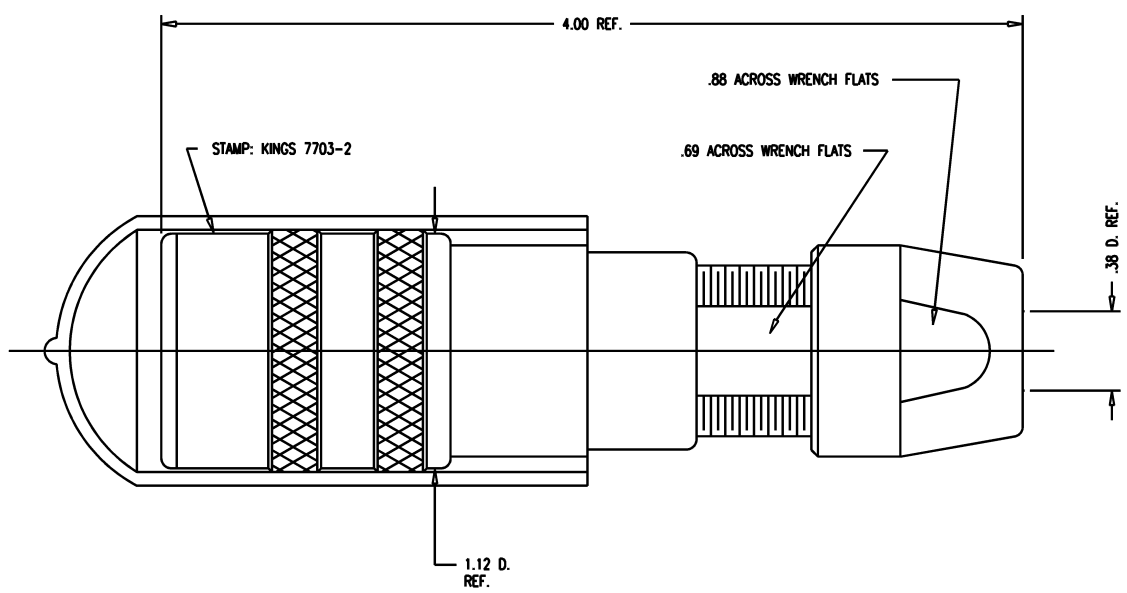


DASH NO.	M CODE	MADE FROM
----------	--------	-----------

GSD

7703-2

REVISIONS	
ISSUE	CHANGES
0	ER 35423 KH 04/10/95
1	CN 36678 A KH 11/07/95
2	CN 37238 D KH 02/03/97
3	CN 39531 C AM 07/12/06
4	CN 39551 E AM 07/31/06



NOTES:

- FOR USE WITH 730 CABLE GROUP.
- FOR CABLING INSTRUCTIONS SEE KAI-8010.
- FOR CRIMPING USE DIE SIZE KTH-2002.
- MATERIALS:
  - INSULATORS: TEFLON, ASTM-D-4894
  - GASKETS: SILICONE RUBBER, ZZ-R-765
  - CAP: VINYL
  - K-GRIP SLEEVE: COM'L BRONZE, ASTM-B-135
  - CENTER CONTACT } BER. COPPER, ASTM-B-196
  - OUTER CONTACT SPRING }
  - INSERT
  - ALL OTHER METAL PARTS: BRASS, ASTM-B16

- FINISHES:
  - CENTER CONTACT } GOLD PLATE PER MIL-G-45204
  - OUTER CONTACT SPRING }
  - NUTS } KINGS TARNISH RESISTANT NICKEL FINISH (TR-5)
  - COLLET }
  - BODIES }
  - ALL OTHER METAL PARTS: SILVER PLATE PER QQ-S-365
- ELECTRICAL CHARACTERISTICS:
  - NOMINAL IMPEDANCE: 75 ~W
  - FREQUENCY RANGE: DC-500 MHZ
  - VOLTAGE BREAKDOWN: CENTER CONDUCTOR/INNER GROUND: 1500 VRMS
  - INNER GROUND/OUTER GROUND: 500 VRMS

SCALE 2:1
APPROX SURFACE AREA
USED ON
REF: KP-8020-730-400
JK, TRI-LOC, SERIAL DIGITAL
DRAWN KH      DATE 04/10/95
DESIGN DW      DATE 04/11/95
APPR.              DATE
<b>KINGS</b> ELECTRONICS CO., INC. ROCK HILL, SOUTH CAROLINA 29730
7703-2

GSD