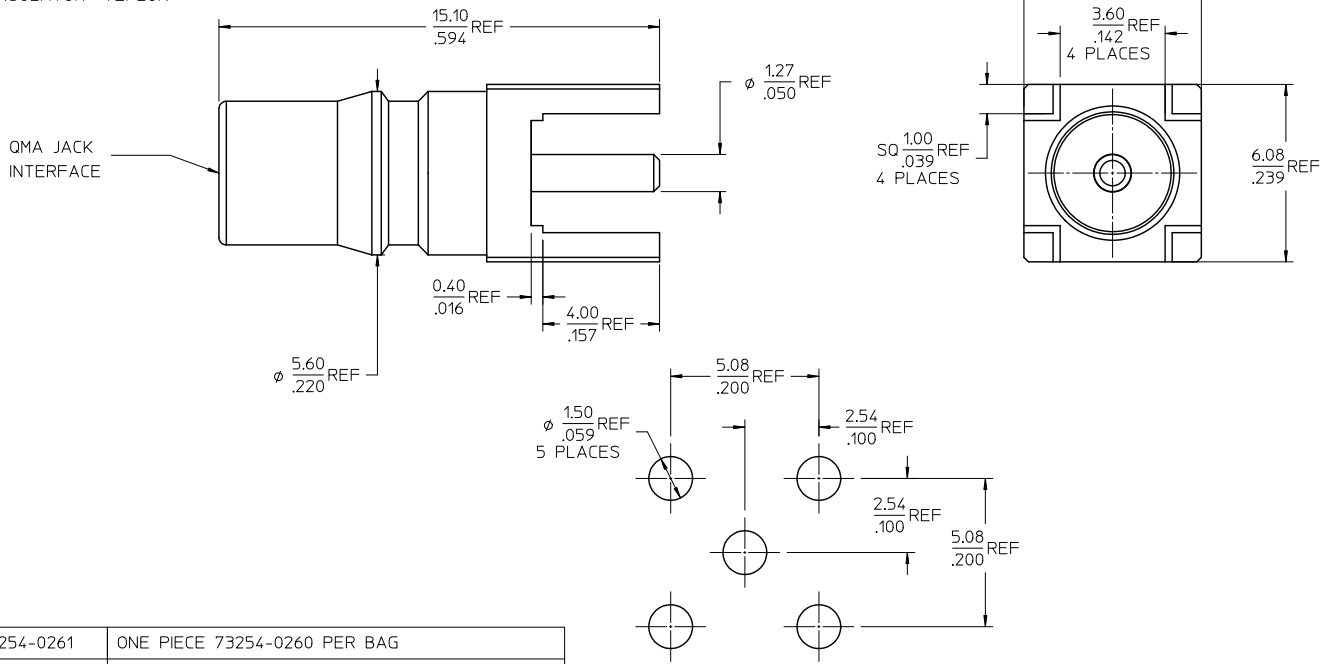
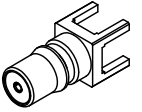


MATERIALS AND FINISHES

BODY BRASS
PLATED GOLD

CENTER CONTACT BERYLLIUM COPPER
PLATED GOLD

INSULATOR TEFLON



RECOMMENDED PCB PATTERN

73254-0261	ONE PIECE 73254-0260 PER BAG
73254-0260	BULK
PART NO.	PACKAGING

PS-89675-1330		QMA	
SPECIFICATION		DESCRIPTION	
DRAWN BY	DATE	TITLE	THIRD ANGLE PROJECTION
JM	2005/08/23	QMA JACK, STRAIGHT PCB, 50 OHMS	
CHECKED BY	DATE	EWR-2890, QMA-J/PCB	
JM	2005/08/23	MOLEX INCORPORATED	
APPROVED BY	DATE	MATERIAL NO.	DOCUMENT NO.
JDW	2005/08/23	SEE TABLE	SD-73254-026
DRAFT WHERE APPLICABLE MUST REMAIN WITHIN DIMENSIONS		SIZE	SHEET NO.
		C	1 OF 1

QUALITY SYMBOLS	GENERAL TOLERANCES (UNLESS SPECIFIED)														
	<table border="1"> <tr> <td></td> <td>mm</td> <td>INCH</td> </tr> <tr> <td>4 PLACES</td> <td>± .005</td> <td>± .0005</td> </tr> <tr> <td>3 PLACES</td> <td>± .008</td> <td>± .0008</td> </tr> <tr> <td>2 PLACES</td> <td>± .010</td> <td>± .0010</td> </tr> <tr> <td>1 PLACE</td> <td>± .015</td> <td>± .0015</td> </tr> </table>		mm	INCH	4 PLACES	± .005	± .0005	3 PLACES	± .008	± .0008	2 PLACES	± .010	± .0010	1 PLACE	± .015
	mm	INCH													
4 PLACES	± .005	± .0005													
3 PLACES	± .008	± .0008													
2 PLACES	± .010	± .0010													
1 PLACE	± .015	± .0015													
<table border="1"> <tr> <td>ANGULAR</td> <td>± 2°</td> </tr> </table>	ANGULAR	± 2°													
ANGULAR	± 2°														

CHG: CLARIFIED BAGGING	DESCRIPTION
EC NO. URF2010-0369	DATE
DRW: ROBERTSON	2009/12/18
CHK: SSS	2009/12/18
APPR: WIENER	2009/12/18
REV	
A3	