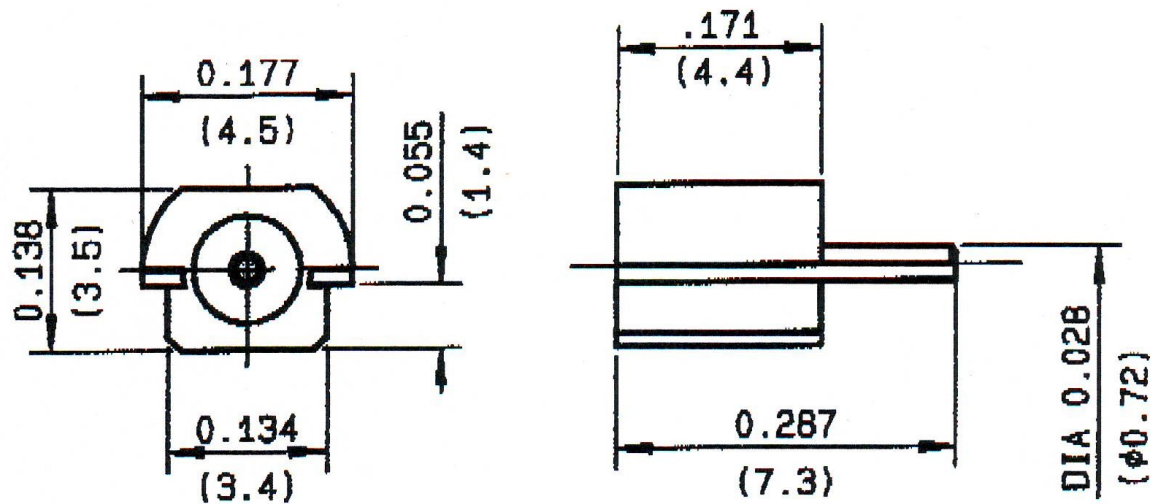


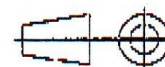
STRAIGHT FEMALE, END LAUNCH

R110.422.100

Series : MMCX



All dimensions are in mm.



COMPONENTS	MATERIALS	PLATINGS (μm)
BODY CENTER CONTACT OUTER CONTACT INSULATOR GASKET OTHERS PARTS - - -	BRASS BERYLLIUM COPPER - PTFE - - - -	GOLD OVER NICKEL GOLD OVER NICKEL - - - -

Issue : 0422 A

In the effort to improve our products, we reserve the right to make changes judged to be necessary.

Elcodis.com electronic components distributor



RADIALL®

STRAIGHT FEMALE, END LAUNCH

R110.422.100

Series : MMCX

PACKAGING

SPECIFICATION

Standard	Unit	Other
100	'W' option	Contact us

ELECTRICAL CHARACTERISTICS

ENVIRONMENTAL

Impedance		50 Ω
Frequency		0-6 GHz
VSWR	AD +	0.000 x F(GHz) Maxi
Insertion loss		AD √F(GHz) dB Maxi
RF leakage	- (AD - F(GHz)) dB Maxi
Voltage rating		250 Veff Maxi
Dielectric withstanding voltage		500 Veff mini
Insulation resistance		1000 MΩ mini

Operating temperature	-55/+155 °C
Hermetic seal	NA Atm.cm3/s
Panel leakage	NA

OTHERS CHARACTERISTICS

Assembly instruction

Others :

MECHANICAL CHARACTERISTICS

Center contact retention		
Axial force – Mating end		10 N mini
Axial force – Opposite end		10 N mini
Torque		NA N.cm mini
Recommended torque		
Mating		NA N.cm
Panel nut		NA N.cm
Mating life		500 Cycles mini
Weight		0.390 g

Issue : 0422 A

In the effort to improve our products, we reserve the right to make changes judged to be

necessary. www.codis.com electronic components distributor



RADIALL®

STRAIGHT FEMALE, END LAUNCH

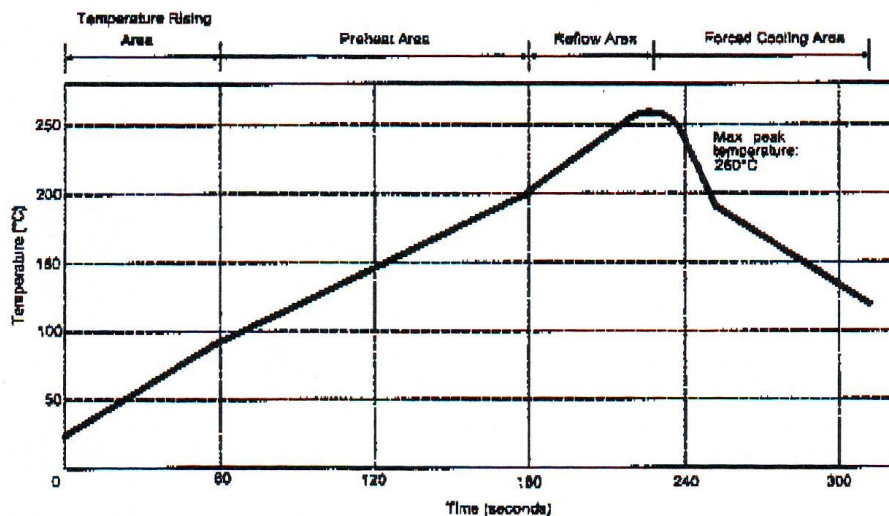
R110.422.100

Series : MMCX

SOLDER PROCEDURE

1. Deposition of solder paste 'Sn Ag4 Cu0.5' on mounting zone by screen printing application. We recommend a low residue flux.
We advise a thickness of 150 microns (0.006 inch). Verify that the edges of the zone are clean.
2. Placement of the receptacle on the mounting zone with an automatic machine of 'pick and place' type. Video camera is recommended for the positioning of the component. Adhesive agents must not be used on the receptacle.
3. Soldering by infra-red reflow.
Below, please find the typical profile to use.
4. Cleaning of printed circuit boards.
5. Checking of solder joints and position of the component by visual inspection.

TEMPERATURE PROFILE



Parameter	Value	Unit
Temperature rising Area	1 - 4	°C/sec
Max Peak Temperature	260	°C
Max dwell time @260°C	10	sec
Min dwell time @235°C	20	sec
Max dwell time @235°C	60	sec
Temperature drop in cooling Area	-1 to -4	°C/sec
Max dwell time above 100°C	420	sec

Issue : 0422 A

In the effort to improve our products, we reserve the right to make changes judged to be

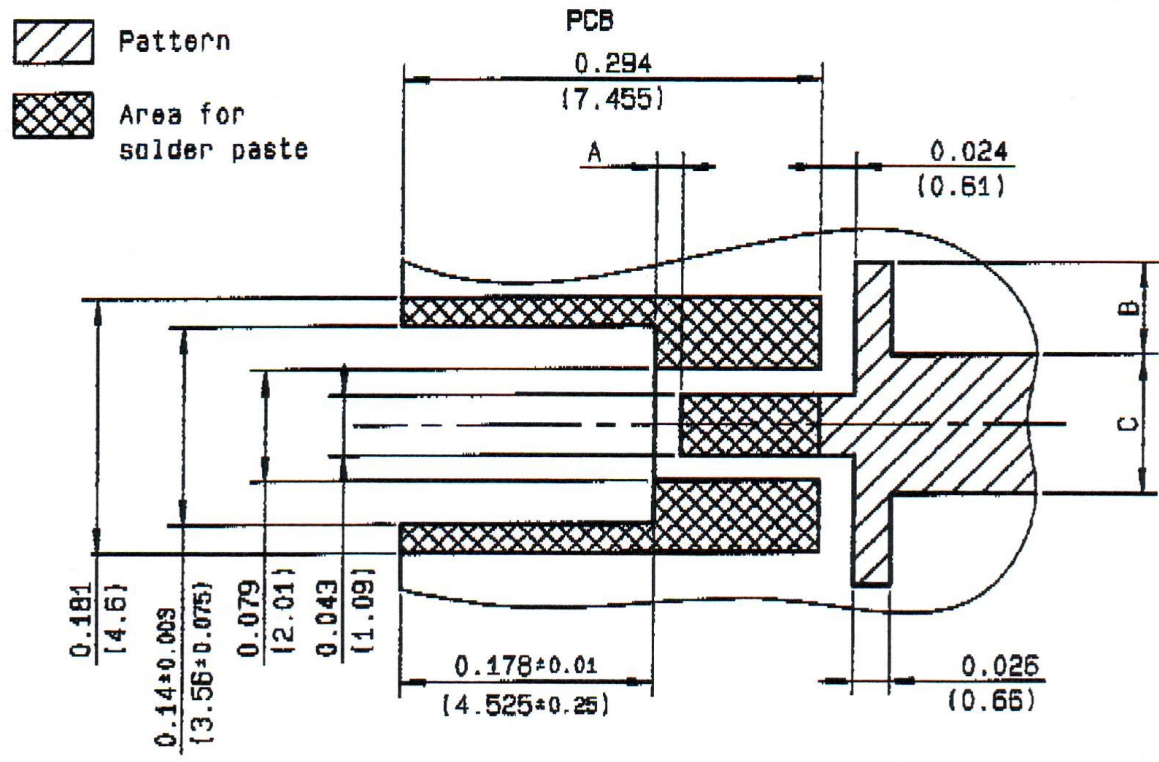
necessary. Elcodis.com electronic components distributor



STRAIGHT FEMALE, END LAUNCH

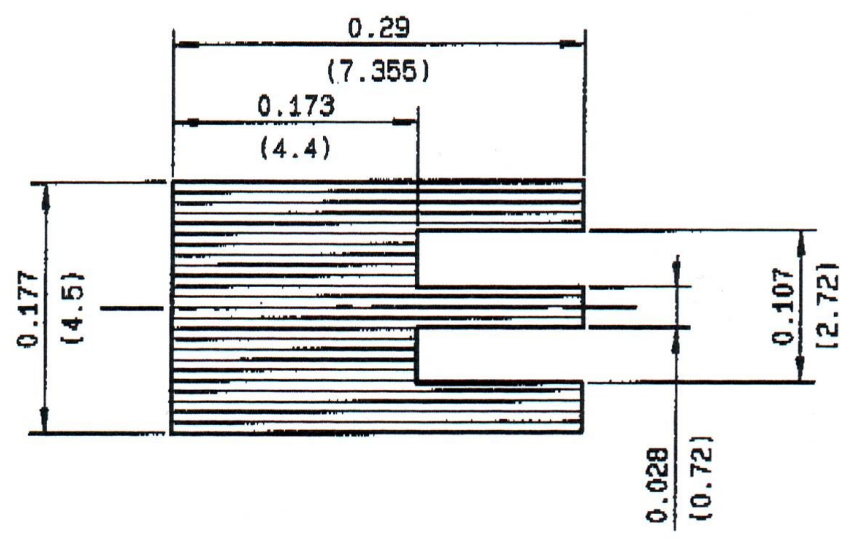
R110.422.100

Series : **MMCX**



PCB THICKNESS	A	B	C
0.031 (0.79)	0.039 (0.99)	-	0.055 (1.4)
0.039 (0.99)	0.035 (0.89)	0.012 (0.3)	0.071 (1.8)
0.063 (1.6)	0.016 (0.41)	0.063 (1.6)	0.11 (2.79)

SHADOW OF MMCX RECEPTACLE FOR VIDEO CAMERA



Issue : 0422 A

In the effort to improve our products, we reserve the right to make changes judged to be necessary.

