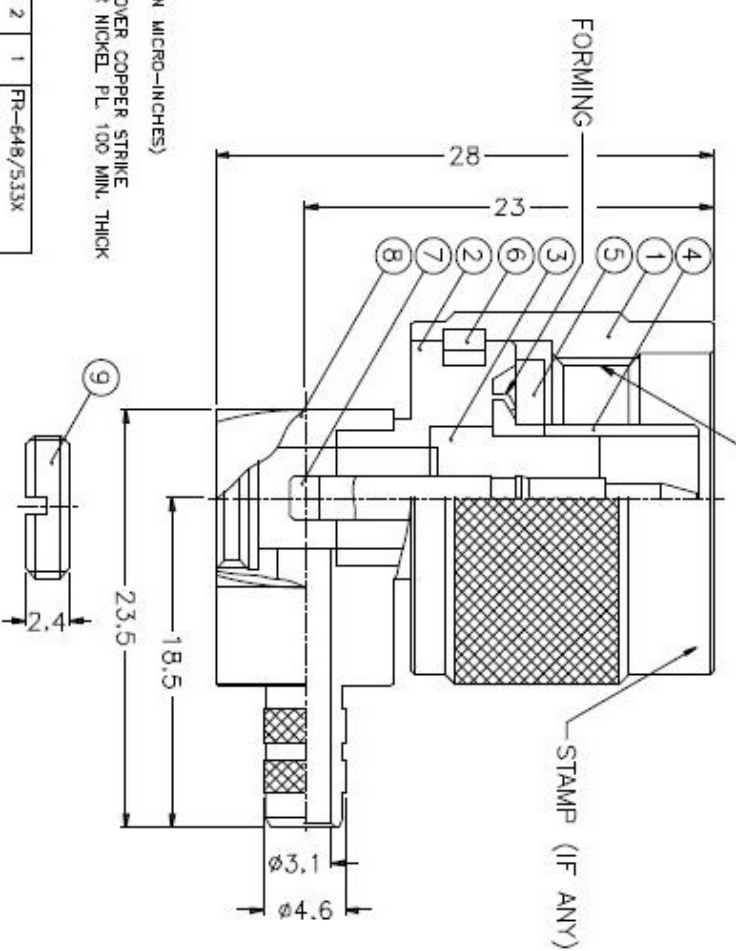
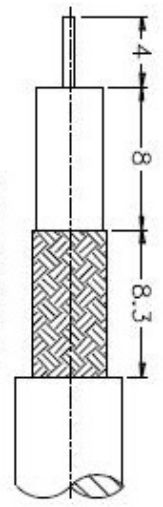


ISS	ZONE	DESCRIPTION\PEP REQUEST\DATE

1 2 3 4 5 6 7 8



1. CRIMPED FERRULE
2. CONTACT PIN TO SOLDER

NOTES: FINISH (PLATING THICKNESS IN MICRO-INCHES)
 1. BRASS PER 00-B-676
 2. NICKEL PL. 100 MIN. THICK OVER COPPER STRIKE
 3. GOLD PL. 3 MIN. THICK OVER NICKEL PL. 100 MIN. THICK OVER COPPER STRIKE
 4. PTFE MIL-P-19465

NO.	DESCRIPTION	MATERIAL	FINISH	QTY	DRAWING NO.
10	FERRULE	COPPER	NOTE 2	1	FR-648/533X 127C
9	NUT	NOTE 1	NOTE 2	1	15697061606-5
8	BARREL	NOTE 1	NOTE 2	1	N1112A2-8-46 /31
7	CONTACT PIN	NOTE 1	NOTE 3	1	N1112A2-7
6	RETAINER RING	SUS 304	NATURAL	1	NS000-7-C
5	GASKET	SILICONE	RED	1	GS-156/BX15
4	CONTACT BODY	NOTE 1	NOTE 2	1	NS000-5
3	INSULATOR	NOTE 4	NATURAL	1	N1112A2-3
2	BODY	NOTE 1	NOTE 2	1	N1112B1-2
1	SHELL	NOTE 1	NOTE 2	1	NS000-1-B

UNLESS OTHERWISE SPECIFIED TOLERANCES	PART NO.	N1112B1-001-NT3G-1-50
0.5-6 = ±0.2	APPROVED	DATE 10-11-01*
6-30 = ±0.4	CHECKED	DATE 10-11-01*
30-120 = ±0.6	DRAWN	DATE 10-11-01*
120-315 = ±1		
315-1000 = ±1.6		
1000-2000 = ±2.4		

<p>Amphenol</p> <p>TITLE N R/A CRIMP PLUG (FOR RG-58/U, 58C/U)</p> <p>DRAWING NO. KU-N1112B1-001-NT3G-58U-50</p>	<p>ITEM NO.</p>
---	-----------------

1 2 3 4 5 6 7 8

A

B

C

D

E

F

A

B

C

D

E

F