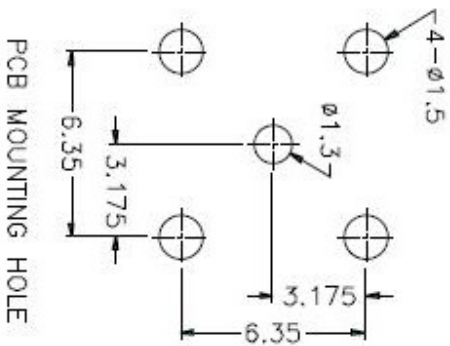
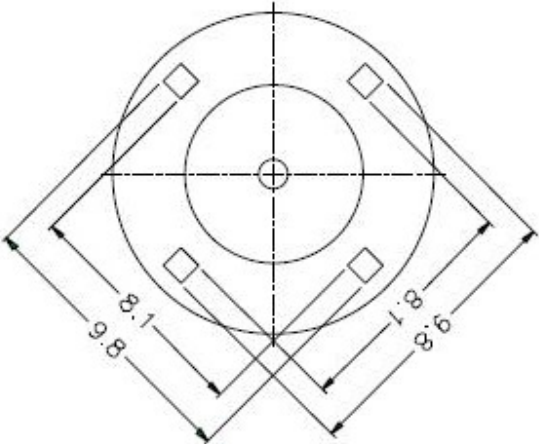
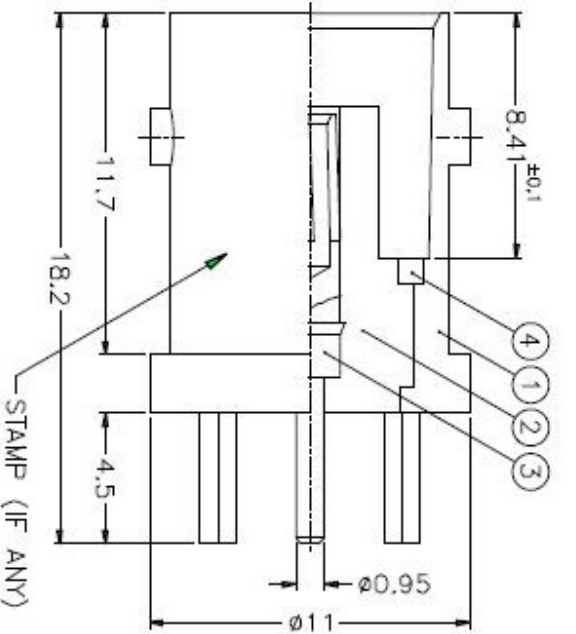


ISS	ZONE	DESCRIPTION\PER REQUEST\DATE
1		

REVISIONS

1 2 3 4 5 6 7 8



- NOTES: FINISH (PLATING THICKNESS IN MICRO-INCHES)
1. BRASS PER QQ-B-626
 2. BRASS PER QQ-B-613
 3. NICKEL PL. 100 MIN. THICK OVER COPPER STRIKE
 4. PHOSPHOR BRONZE PER QQ-B-750
 5. GOLD PL. 3 MIN. THICK OVER NICKEL PL. 100 MIN. THICK OVER COPPER STRIKE
 6. PTFE - MIL-P-19458

NO.	DESCRIPTION	MATERIAL	FINISH	QTY	DRAWING NO.
1	LOCK RING	NOTE 2	NOTE 3	1	B7700-4
2	CONTACT PIN	NOTE 4	NOTE 5	1	B7700-3
3	INSULATOR	NOTE 6	NATURAL	1	B7700-27-50-B
4	BODY	NOTE 1	NOTE 3	1	B7700-1-A

DIMENSIONS ARE IN MILLIMETERS
UNLESS OTHERWISE SPECIFIED
TOLERANCES

0.5-6	±0.2
6-30	±0.4
30-120	±0.6
120-315	±1
315-1000	±1.6
1000-2000	±2.4

PART NO. B6251C1-NT3G-50
APPROVED DATE 10-11-01'
CHECKED DATE 10-11-01'
DRAWN DATE 10-11-01'

TITLE
BNC P.C. MOUNT RECEIPT, JACK
DRAWING NO. KJ-B6251C1-NT3G-50
ITEM NO.

Amphenol

1 2 3 4 5 6 7 8