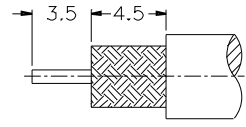
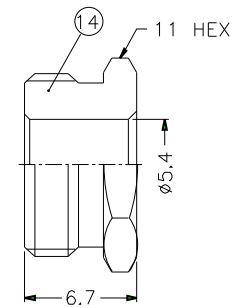
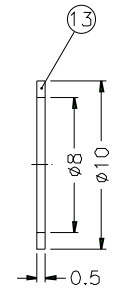
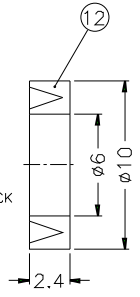
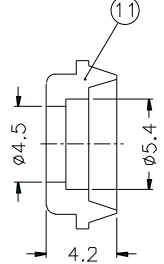
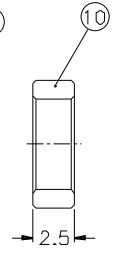
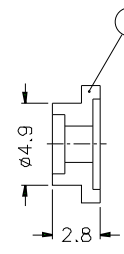
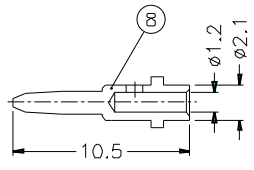
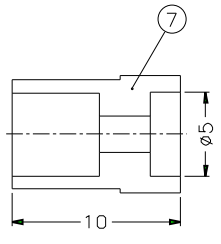
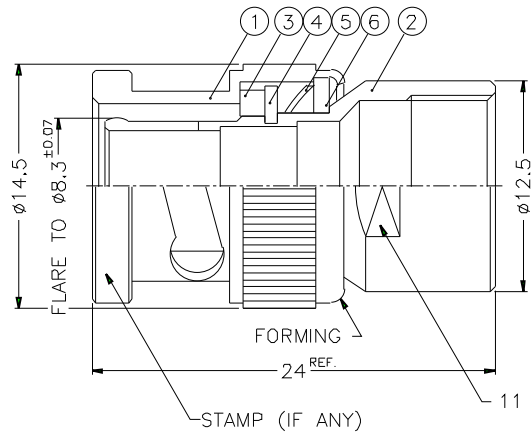


REVISIONS		
ISS	ZONE	DESCRIPTION\PER REQUEST\DATE



RECOMMENDED CABLE STRIPPING DIM'S



- NOTES: FINISH (PLATING THICKNESS IN MICRO-INCHES)
- BRASS PER QQ-B-626
  - BRASS PER QQ-B-613
  - NICKEL PL. 100 MIN. THICK OVER COPPER STRIKE
  - NICKEL PL. 200 MIN. THICK OVER COPPER STRIKE
  - GOLD PL. 3 MIN. THICK OVER NICKEL PL. 100 MIN. THICK OVER COPPER STRIKE

1. CRIMPED CONTACT PIN  
HEX CRIMP SIZE .068"

14	HEX NUT	NOTE 1	NOTE 3	1	B5200-14-11/54
13	WASHER	NOTE 2	NOTE 3	1	WS-10/8X05
12	GASKET	SILICONE	RED	1	B5200-12
11	BRAID CLAMP	NOTE 1	NOTE 3	1	B5200-11-54/45-B
10	RING	NOTE 1	NOTE 3	1	B5200-10
9	INSULATOR	DELTRIN	NATURAL	1	B5200-9
8	CONTACT PIN	NOTE 1	NOTE 5	1	B5200-8-21/12
7	INSULATOR	DELTRIN	NATURAL	1	B5200-7-50
6	WASHER	NOTE 2	NOTE 3	1	WS-128/9X08
5	SPRING	SK5	NOTE 4	1	B50000-6
4	RETAINER RING	NOTE 1	NOTE 3	1	B50000-5
3	GASKET	RUBBER	RED	1	GS-115/8X15
2	BODY	NOTE 1	NOTE 3	1	B5200-2-A
1	SHELL	NOTE 1	NOTE 3	1	B50000-1-B

DIMENSIONS ARE IN MILLIMETERS  
UNLESS OTHERWISE SPECIFIED  
TOLERANCES  
0.5-6 = ±0.2  
6-30 = ±0.4  
30-120 = ±0.6  
120-315 = ±1  
315-1000 = ±1.6  
1000-2000 = ±2.4

PART NO.	B1141A1-ND3G-1-50
APPROVED	DATE 10-11-01'
CHECKED	DATE 10-11-01'
DRAWN	DATE 10-11-01'
FILE NO.	

**Amphenol**

TITLE BNC CLAMP PLUG  
(FOR RG-58C/U,58/U,142A/U)

DRAWING NO.  
KJ-B1141A1-ND3G-58U-50

ITEM NO.

NO.	DESCRIPTION	MATERIAL	FINISH	Q'TY	DRAWING NO.	SCALE	3/1	ISSUE	A	FILE NO.
1										
2										
3										
4										
5										
6										
7										
8										