

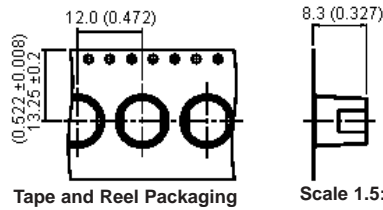
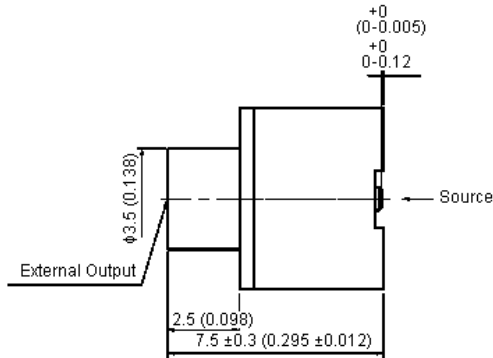
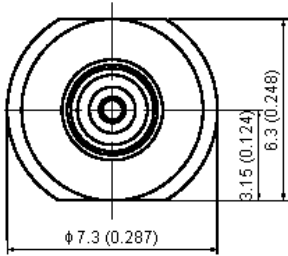


PART NO.

37-21 TGG

REVISIONS

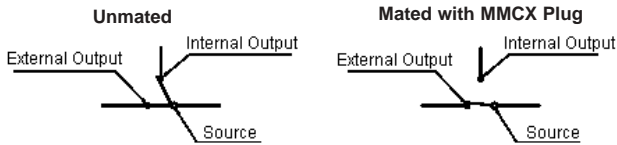
ECN #	REV	DESCRIPTION	DRAWN	DATE	CHECKD	DATE	APPRVD	DATE
-	A	RELEASED	Veena	06/07/10	Jagan	06/07/10	Farnell	20/07/10



Tape and Reel Packaging

Scale 1.5:1

Dimensions : Millimetres (Inches)



Electrical Scheme

This data sheet and its contents (the "Information") belong to the Premier Farnell Group (the "Group") or are licensed to it. No licence is granted for the use of it other than for information purposes in connection with the products to which it relates. No licence of any intellectual property rights is granted. The Information is subject to change without notice and replaces all data sheets previously supplied. The Information supplied is believed to be accurate but the Group assumes no responsibility for its accuracy or completeness, any error in or omission from it or for any use made of it. Users of this data sheet should check for themselves the Information and the suitability of the products for their purpose and not make any assumptions based on information included or omitted. Liability for loss or damage resulting from any reliance on the Information or use of it (including liability resulting from negligence or where the Group was aware of the possibility of such loss or damage arising) is excluded. This will not operate to limit or restrict the Group's liability for death or personal injury resulting from its negligence. SPC MULTICOMP is the registered trademark of the Group. © Premier Farnell plc 2010.

TOLERANCES:

UNLESS OTHERWISE SPECIFIED, DIMENSIONS ARE FOR REFERENCE PURPOSES ONLY.

DRAWN BY:	DATE:
Veena	06/07/10
CHECKED BY:	DATE:
Jagan	06/07/10
APPROVED BY:	DATE:
Farnell	20/07/10

DRAWING TITLE:

MMCX Jack Switch for Surface Mount

SIZE	DWG NO.	ELECTRONIC FILE	REV
A	M10002460	37-21 TGG_DWG	A
SCALE: NTS	U.O.M.: mm (Inches)	SHEET: 1 OF 4	

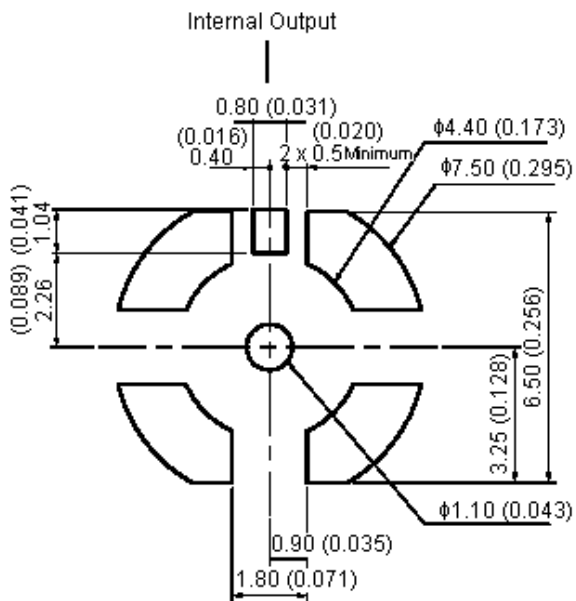


PART NO.

37-21 TGG

REVISIONS

ECN #	REV	DESCRIPTION	DRAWN	DATE	CHECKD	DATE	APPRVD	DATE
-	A	RELEASED	Veena	06/07/10	Jagan	06/07/10	Farnell	20/07/10



Recommended Land Pattern

Dimensions : Millimetres (Inches)

This data sheet and its contents (the "Information") belong to the Premier Farnell Group (the "Group") or are licensed to it. No licence is granted for the use of it other than for information purposes in connection with the products to which it relates. No licence of any intellectual property rights is granted. The Information is subject to change without notice and replaces all data sheets previously supplied. The Information supplied is believed to be accurate but the Group assumes no responsibility for its accuracy or completeness, any error in or omission from it or for any use made of it. Users of this data sheet should check for themselves the Information and the suitability of the products for their purpose and not make any assumptions based on information included or omitted. Liability for loss or damage resulting from any reliance on the Information or use of it (including liability resulting from negligence or where the Group was aware of the possibility of such loss or damage arising) is excluded. This will not operate to limit or restrict the Group's liability for death or personal injury resulting from its negligence. SPC MULTICOMP is the registered trademark of the Group. © Premier Farnell plc 2010.

TOLERANCES:

UNLESS OTHERWISE SPECIFIED, DIMENSIONS ARE FOR REFERENCE PURPOSES ONLY.

DRAWN BY:	DATE:
Veena	06/07/10
CHECKED BY:	DATE:
Jagan	06/07/10
APPROVED BY:	DATE:
Farnell	20/07/10

DRAWING TITLE:

MMCX Jack Switch for Surface Mount

SIZE A	DWG NO. M10002460	ELECTRONIC FILE 37-21 TGG_DWG	REV A
SCALE: NTS		U.O.M.: mm (Inches)	SHEET: 2 OF 4



PART NO.

37-21 TGG

REVISIONS

ECN #	REV	DESCRIPTION	DRAWN	DATE	CHECKD	DATE	APPRVD	DATE
-	A	RELEASED	Veena	06/07/10	Jagan	06/07/10	Farnell	20/07/10

Specifications:

Electrical:

Frequency range : DC-3 GHz internal
 DC-6 GHz external.
 Nominal impedance : 50Ω.
 Maximum working voltage : 250 volts.
 Proof voltage : 500 volts.
 Maximum VSWR : 1.5.

Materials:

Bodies : Brass per JIS-C3604.
 Centre contact : Beryllium copper per ASTM B196 UNS C17300
 Brass per JIS-C3604.
 Insulation : Teflon per ASTM D1457 and ASTM D1710.

Finishes and others:

See below table for details.

Mechanical:

Interface in accordance with : BS EN 122340.

Environmental:

Operating temperature range : -55°C to +155°C.

This data sheet and its contents (the "Information") belong to the Premier Farnell Group (the "Group") or are licensed to it. No licence is granted for the use of it other than for information purposes in connection with the products to which it relates. No licence of any intellectual property rights is granted. The Information is subject to change without notice and replaces all data sheets previously supplied. The Information supplied is believed to be accurate but the Group assumes no responsibility for its accuracy or completeness, any error in or omission from it or for any use made of it. Users of this data sheet should check for themselves the Information and the suitability of the products for their purpose and not make any assumptions based on information included or omitted. Liability for loss or damage resulting from any reliance on the Information or use of it (including liability resulting from negligence or where the Group was aware of the possibility of such loss or damage arising) is excluded. This will not operate to limit or restrict the Group's liability for death or personal injury resulting from its negligence. SPC MULTICOMP is the registered trademark of the Group. © Premier Farnell plc 2010.

TOLERANCES:

UNLESS OTHERWISE SPECIFIED, DIMENSIONS ARE FOR REFERENCE PURPOSES ONLY.

DRAWN BY:	DATE:
Veena	06/07/10
CHECKED BY:	DATE:
Jagan	06/07/10
APPROVED BY:	DATE:
Farnell	20/07/10

DRAWING TITLE:

MMCX Jack Switch for Surface Mount

SIZE A	DWG NO. M10002460	ELECTRONIC FILE 37-21 TGG_DWG	REV A
SCALE: NTS		U.O.M.: mm (Inches)	SHEET: 3 OF 4



PART NO.

37-21 TGG

REVISIONS

ECN #	REV	DESCRIPTION	DRAWN	DATE	CHECKD	DATE	APPRVD	DATE
-	A	RELEASED	Veena	06/07/10	Jagan	06/07/10	Farnell	20/07/10

Specification Table

Item	Description	Material	Finish	Part Number
1	Body	Brass	Gold 3μ Inches Minimum	37-21 TGG
2	Centre Contact I	Beryllium Copper	Gold 10μ Inches Minimum	
3	Insulation I	Teflon	None	
4	Centre Contact II	Brass	Gold 10μ Inches Minimum	
5	Spring	Stainless Steel	None	
6	Insulation II	LCP	Black	
7	Centre Contact III	Brass	Gold 3μ Inches Minimum	
8	Insulation III	Teflon	None	

<http://www.farnell.com>

<http://www.newark.com>

<http://www.cpc.co.uk>

This data sheet and its contents (the "Information") belong to the Premier Farnell Group (the "Group") or are licensed to it. No licence is granted for the use of it other than for information purposes in connection with the products to which it relates. No licence of any intellectual property rights is granted. The Information is subject to change without notice and replaces all data sheets previously supplied. The Information supplied is believed to be accurate but the Group assumes no responsibility for its accuracy or completeness, any error in or omission from it or for any use made of it. Users of this data sheet should check for themselves the Information and the suitability of the products for their purpose and not make any assumptions based on information included or omitted. Liability for loss or damage resulting from any reliance on the Information or use of it (including liability resulting from negligence or where the Group was aware of the possibility of such loss or damage arising) is excluded. This will not operate to limit or restrict the Group's liability for death or personal injury resulting from its negligence. SPC MULTICOMP is the registered trademark of the Group. © Premier Farnell plc 2010.

TOLERANCES:

UNLESS OTHERWISE SPECIFIED, DIMENSIONS ARE FOR REFERENCE PURPOSES ONLY.

DRAWN BY:	DATE:
Veena	06/07/10
CHECKED BY:	DATE:
Jagan	06/07/10
APPROVED BY:	DATE:
Farnell	20/07/10

DRAWING TITLE:

MMCX Jack Switch for Surface Mount

SIZE A	DWG NO. M10002460	ELECTRONIC FILE 37-21 TGG_DWG	REV A
SCALE: NTS		U.O.M.: mm (Inches)	SHEET: 4 OF 4