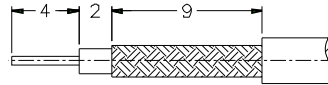
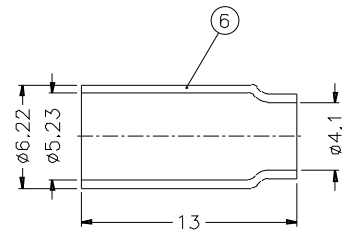
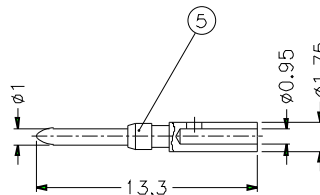
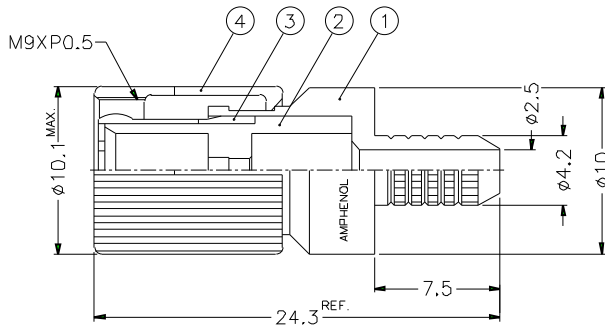


REVISIONS			
ISS	ZONE	DESCRIPTION\PER REQUEST\DATE	



RECOMMENDED
CABLE STRIPPING DIM'S

- CABLES: - NORTELL
 RA 750-304541
 - L910/39
 - TR-SP.125
 - L910/34
 - BT 3002
 - TR-SP.127
 - PT-R 0229/70



- FERRULE CRIMPING TOOLS P/N
 227-944 (M22520/5.01)
 227-1221-19B (M22520/5.19) HEX: 5.41 L= 10.16
- INNER CONTACT CRIMPING TOOL P/N
 413 SP 00 ADJUST TO 5 (CABLE BT 3002: ADJUST TO 3)
- STRIPPING TOOL FOR L910/34
 SP 456 00
- CONNECTOR ACCORDING TO NF C 93-570, DIN 47-295, CEI 169-13
- PACKAGING IN BAG WITH COMMERCIAL PART NUMBER AND DATE CODE

DIMENSIONS ARE IN MILLIMETERS					PART NO. 156 929 34		Amphenol		
6	FERRULE	COPPER	NICKEL	1	APPROVED	DATE			TITLE
5	CONTACT PIN	BRASS	GOLD	1	CHECKED	DATE	1.6/5.6 75Ω STRAIGHT PLUG, CRIMP TYPE		
4	SHELL	BRASS	NICKEL	1	DRAWN	DATE	DRAWING NO.		
3	OUTER CONTACT	BRONZE	GOLD	1	FILE NO.		ITEM NO.		
2	INSULATOR	TEFLON	NATURAL	1					
1	BODY	BRASS	NICKEL	1					
NO.	DESCRIPTION	MATERIAL	FINISH	Q'TY	DRAWING NO.	SCALE	3/1	ISSUE	A