

4

3

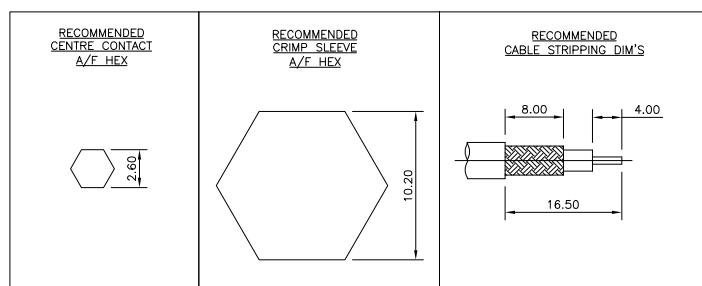
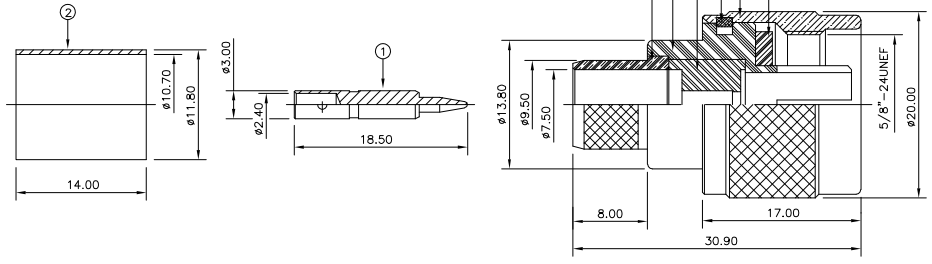
2

1

THIS DRAWING IS UNPUBLISHED. RELEASED FOR PUBLICATION SEP. 2005.
 © COPYRIGHT 2005 BY TYCO ELECTRONICS CORPORATION. ALL RIGHTS RESERVED.

LOC	DIST	REVISIONS			
P	LTR	DESCRIPTION	DATE	DWN	APVD
C		ECR-05-011509	21SEP05	JMS	FWK

- NOTES:**
- 1. PACK IN ACCORDANCE WITH AMP SPEC 107-3275
 - 2. 100 TRAY PACK IN ACCORDANCE WITH AMP SPEC 107-3275
 - 3. Ag PLATING
 - 4. THIS ITEM MUST BE WHITE
 - 5. HAND TOOL: 9-1478239-0
 - 6. **ELECTRICAL CHARACTERISTICS**
 FREQUENCY RANGE: DC - 11 GHz
 NOMINAL IMPEDANCE: 50 Ohm
 INSULATION RESISTANCE: 5000 MOhm
 WORKING VOLTAGE: 1000 Volts RMS at Sea Level
 DIELECTRIC WITHSTAND VOLTAGE: 2500 Volts RMS Max
 CONTACT RESISTANCE:
 CENTRE CONTACT: 1.00 mOhm Max
 OUTER CONTACT: 1.00 mOhm Max
 VSWR @ 4GHz: 1.30:1 Max
 INSERTION LOSS dB @ x 4 GHz: 0.30 Max
 - 7. **MECHANICAL CHARACTERISTICS**
 COUPLING NUT RETENTION FORCE: 445N Min
 CABLE RETENTION FORCE: 350N Min
 DURABILITY: 500 Cycles Min
 - 8. **ENVIRONMENTAL CHARACTERISTICS**
 OPERATING TEMPERATURE: -65 to +165 DegC



QTY	PER ASSY	MATERIAL	DESCRIPTION	ITEM
1	1	SILICON RUBBER	GASKET	8
1	1	BRASS	SHELL	7
1	1	BRASS	CIRCLIP	6
1	1	PTFE	INSULATION	5
1	1	BRASS	BODY	4
1	1	BRASS	OUTER CONTACT	3
1	1	BRASS	FERRULE	2
1	1	BRASS	CONTACT	1
6--0	1--0	MATERIAL	DESCRIPTION	ITEM

THIS DRAWING IS A CONTROLLED DOCUMENT.

DIMENSIONS: mm	TOLERANCES UNLESS OTHERWISE SPECIFIED:	DWN J. SANDWELL 21SEP05	21SEP05	21SEP05	21SEP05	21SEP05	21SEP05	21SEP05	21SEP05
0 PLC	±	CHK S. PARLOW	APVD F. WHEELER-KING	PRODUCT SPEC	108-3435	APPLICATION SPEC	411-3247	WEIGHT	-
1 PLC	±	Tyco Electronics Corporation Biddeford EX39 4HE TYPE-N STRAIGHT PLUG CRIMP 50 OHM PSF 1/4, RGA/U, 213/U, URM67, KX4							
2 PLC	±	SIZE: A3 CAGE CODE: 00779 DRAWING NO: 1337410 RESTRICTED TO: -							
3 PLC	±	MATERIAL: SEE TABLE FINISH: SEE TABLE CUSTOMER DRAWING SCALE: NTS SHEET 1 OF 1 REV C							
4 PLC	±	AMP 1470-19 REV 31MAR2000							