

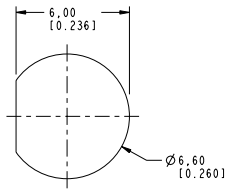
NOTES:

- MATERIALS AND FINISHES:  
 BODY - BRASS, GOLD PLATING  
 CONTACT - BeCu, GOLD PLATING  
 INSULATOR - PTFE
- ELECTRICAL:  
 A. IMPEDANCE: 75 OHMS  
 B. FREQUENCY RANGE: DC - 4 GHz  
 C. RETURN LOSS : 30 dB @ 3 GHz  
 D. DIELECTRIC WITHSTANDING VOLTAGE: 1000 VRMS, MIN.  
 E. INSULATION RESISTANCE: 10,000 MEGOHMS MIN
- MECHANICAL:  
 A. DURABILITY: 500 CYCLES MIN.
- ENVIRONMENTAL:  
 A. THERMAL SHOCK PER MIL-STD-202 METHOD 107  
 TEST CONDITION B (EXCEPT HIGH TEMP @200°C)  
 B. VIBRATION: MIL-STD-202 METHOD 204 TEST CONDITION B  
 C. SHOCK: MIL-STD-202 METHOD 213 TEST CONDITION B  
 D. CORROSION: MIL-STD-202 METHOD 101  
 TEST CONDITION B 5% SALT SOLUTION
- AMPHENOL SPANNER WRENCH Z27-1490 REQUIRED TO MOUNT CONNECTOR TO PANEL.
- PACKAGING:  
 A. QUANTITY: SINGLE PACK  
 B. MARKING: BAG TO BE MARKED "AMPHENOLRF, 34-1018 AND DATE CODE"

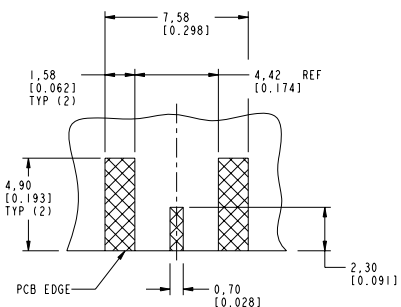
THIRD ANGLE PROJ.

REVISIONS

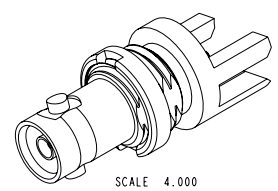
REV	DESCRIPTION	DATE	ECO	APPR
A	RELEASED TO MFG.	--	48167	AAP



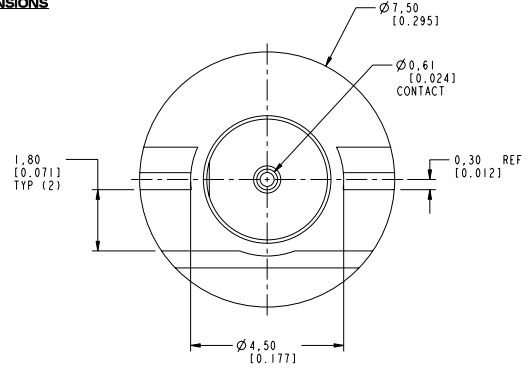
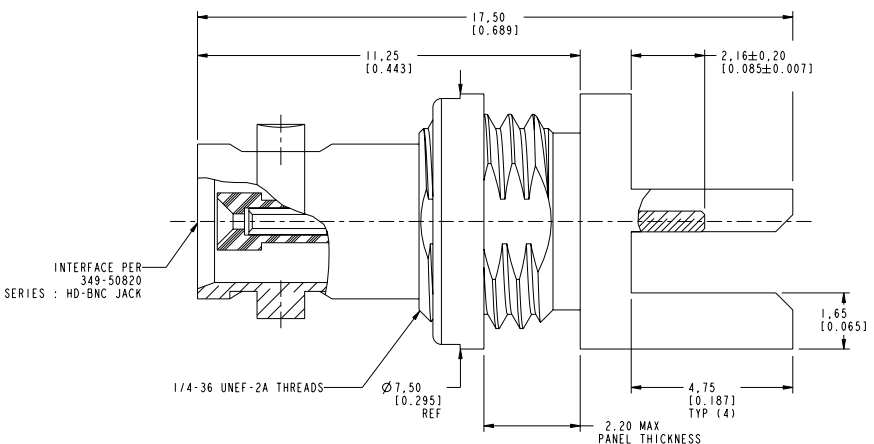
SCALE 5.000  
RECOMMENDED MOUNTING HOLE DIMENSIONS



SCALE 5.000  
RECOMMENDED PCB DIMENSIONS



SCALE 4.000



**CUSTOMER OUTLINE DRAWING**  
ALL OTHER SHEETS ARE FOR INTERNAL USE ONLY

UNLESS OTHERWISE SPECIFIED, DIMENSIONS ARE IN METRIC AND TOLERANCES ARE: <0.5mm ±0.05mm    0.5 - 6mm ±0.1mm    6 - 30mm ±0.2mm    30 - 120mm ±0.3mm    ANGLES ±1°	MATERIAL	DRAWN	DATE	TITLE HD BNC BHD JACK EDGE MOUNT FOR 0.062" THICK BOARD	Amphenol RF Danbury CT USA, Taiwan, Taiwan, Shenzhen, China www.amphenolrf.com
	SEE NOTES	S. LI	12-Aug-10		
NOTICE: These drawings, specifications, or other data (1) are, and remain the property of Amphenol Corp. (2) must be returned upon request; and (3) are confidential and not to be disclosed to any person other than those to whom they are given by Amphenol Corp. The furnishing of these drawings, specifications, or other data by Amphenol Corp., or to any other person for any purpose is not to be regarded by implication or otherwise in any manner licensing, granting rights to permitting such holder or any other person to manufacture, use or sell any product, process or design, patented or otherwise, that may in any way be related to or disclosed by said drawings, specifications, or other data.	REFERENCE	APPROVED	DATE	SCALE: 9.0:1.0	SHEET 2 OF 5
	CONFIGURATION LEVEL:	EAR # 3896	S. HSIEH	16-Aug-10	DWG SIZE B
FINISH		CAD FILE	Root Folder/HD-BNC/34-1018		DRAWING NO. 34-1018 ITEM NO. 34-1018 PART NO. 34-1018

THIRD ANGLE PROJ.

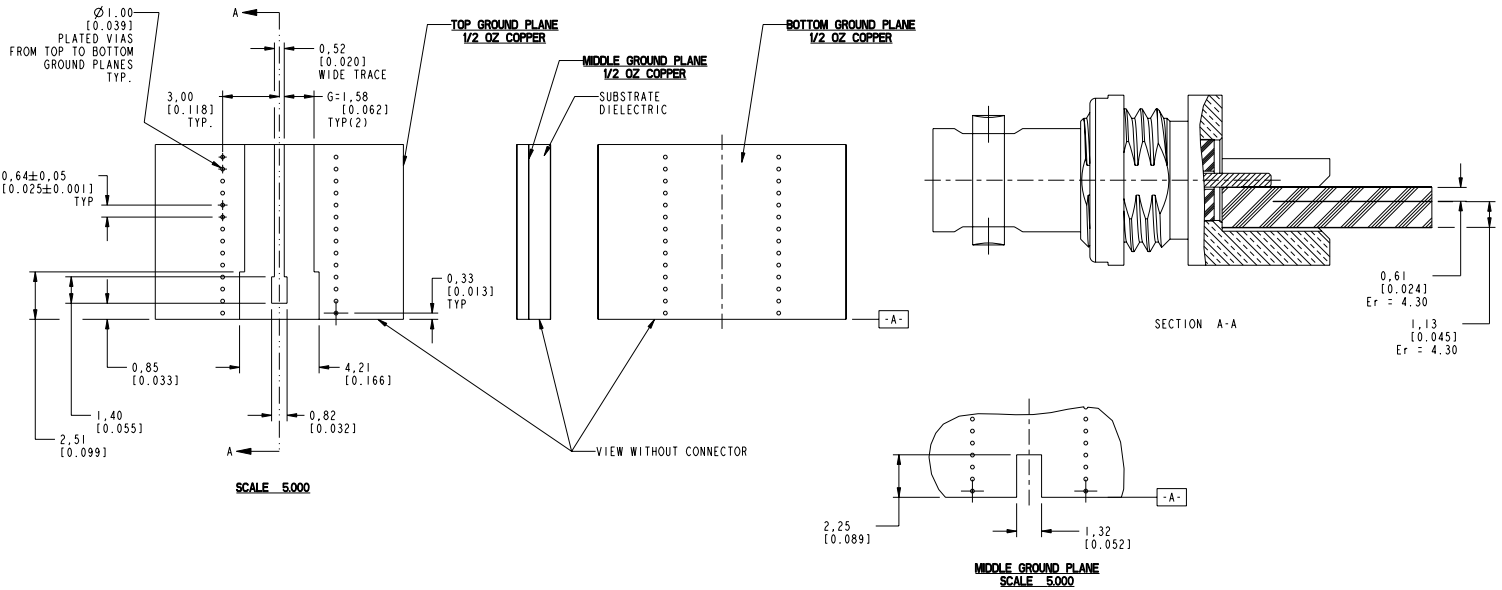
REVISIONS

REV	DESCRIPTION	DATE	ECO	APPR
A	RELEASED TO MFG.	--	48167	AAP

CONFIGURATION - 0

# RECOMMENDED PCB LAUNCH FOR OPTIMAL RF PERFORMANCE

VARIATIONS IN BOARD SUBSTRATE AND TRACE MAY REQUIRE DIFFERENT GEOMETRY



<p>UNLESS OTHERWISE SPECIFIED, DIMENSIONS ARE IN METRIC AND TOLERANCES ARE:</p> <table border="1"> <tr> <td>&lt; 0.5mm</td> <td>0.5 - 6mm</td> <td>6 - 30mm</td> <td>30 - 120mm</td> <td>ANGLES</td> </tr> <tr> <td>± 0.05mm</td> <td>± 0.1mm</td> <td>± 0.2mm</td> <td>± 0.3mm</td> <td>± 1°</td> </tr> </table> <p>NOTICE - These drawings, specifications, or other data (1) are, and remain the property of Amphenol Corp., (2) must be returned upon request; and (3) are confidential and not to be disclosed to any person other than those to whom they are given by Amphenol Corp. The furnishing of these drawings, specifications, or other data by Amphenol Corp., or to any other person to anyone for any purpose is not to be regarded by implication or otherwise in any manner licensing, granting rights to permitting such holder or any other person to manufacture, use or sell any product, process or design, patented or otherwise, that may in any way be related to or disclosed by said drawings, specifications, or other data.</p>	< 0.5mm	0.5 - 6mm	6 - 30mm	30 - 120mm	ANGLES	± 0.05mm	± 0.1mm	± 0.2mm	± 0.3mm	± 1°	<p>MATERIAL</p> <p>REFERENCE: EAR # 3896</p> <p>CONFIGURATION LEVEL:</p> <p>FINISH</p>	<p>DRAWN: S. LI</p> <p>ENGINEER: PADMANABHAN E</p> <p>APPROVED: S. HSIEH</p> <p>CAD FILE: Root Folder/HD-BNC/34-1018</p>	<p>DATE: 12-Aug-10</p> <p>DATE: 25-Jun-10</p> <p>DATE: 16-Aug-10</p>	<p>TITLE: HD BNC BHD JACK EDGE MOUNT FOR 0.062" THICK BOARD</p> <p>SCALE: 12.0:1.0 SHEET 3 OF 5</p> <p>DWG SIZE: B</p> <p>REV: A</p>	<p>Amphenol RF</p> <p>Danbury CT USA, Tainan, Taiwan, Shenzhen, China</p> <p>www.amphenolrf.com</p> <p>DRAWING NO. 34-1018</p> <p>ITEM NO. 34-1018</p> <p>PART NO. 34-1018</p>
	< 0.5mm	0.5 - 6mm	6 - 30mm	30 - 120mm	ANGLES										
± 0.05mm	± 0.1mm	± 0.2mm	± 0.3mm	± 1°											

THIRD ANGLE PROJ.

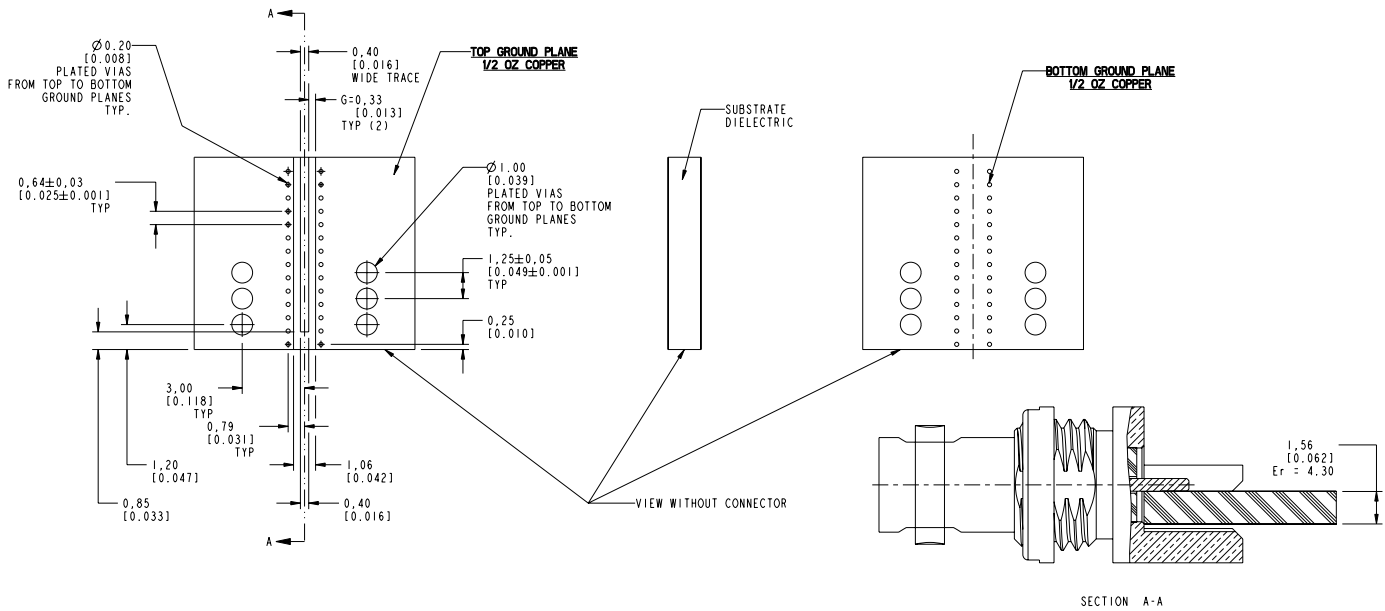
REVISIONS

CONFIGURATION - 1

REV	DESCRIPTION	DATE	ECO	APPR
A	RELEASED TO MFG.		48167	PNE

# RECOMMENDED PCB LAUNCH FOR OPTIMAL RF PERFORMANCE

VARIATIONS IN BOARD SUBSTRATE AND TRACE MAY REQUIRE DIFFERENT GEOMETRY



UNLESS OTHERWISE SPECIFIED, DIMENSIONS ARE IN METRIC AND TOLERANCES ARE:  
 < 0.5mm ±0.05mm    0.5 - 6mm ±0.1mm    6 - 30mm ±0.2mm    30 - 120mm ±0.3mm    ANGLES ±1°

NOTICE - These drawings, specifications, or other data (1) are, and remain the property of Amphenol Corp., (2) must be returned upon request; and (3) are confidential and not to be disclosed to any person other than those to whom they are given by Amphenol Corp. The furnishing of these drawings, specifications, or other data by Amphenol Corp., or to any other person for any purpose is not to be regarded by implication or otherwise in any manner licensing, granting rights to permitting such holder or any other person to manufacture, use or sell any product, process or design, patented or otherwise, that may in any way be related to or disclosed by said drawings, specifications, or other data.

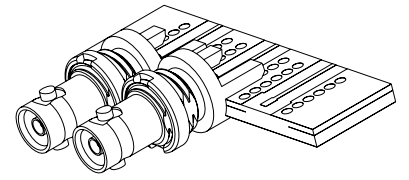
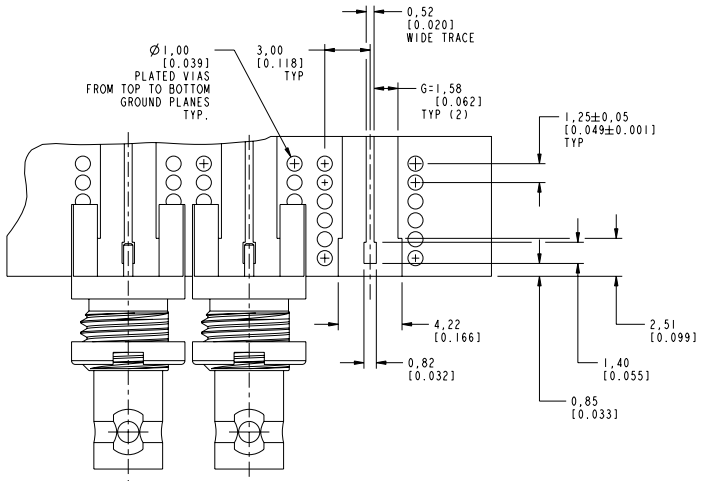
MATERIAL	-	DRAWN	S.L.I	DATE	12-Aug-10
REFERENCE	EAR # 3896	ENGINEER	PADMANABHAN E	DATE	15-Jul-10
CONFIGURATION LEVEL:		APPROVED	S. HSIEH	DATE	16-Aug-10
FINISH		CAD FILE	Root Folder/HD-BNC/34-1018	SCALE:	6.0:1.0

TITLE	HD BNC BHD JACK EDGE MOUNT FOR 0.062" THICK BOARD
SHEET	4 OF 5
DWG SIZE	B
REV	A

Amphenol RF	
Danbury CT USA, Tainan, Taiwan, Shenzhen, China www.amphenolrf.com	
DRAWING NO.	34-1018
ITEM NO.	34-1018
PART NO.	34-1018

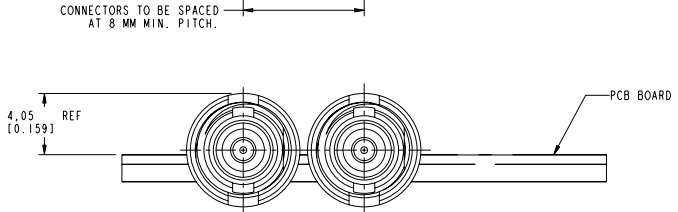
THIRD ANGLE PROJ.

REVISIONS			
REV	DESCRIPTION	DATE	ECO
A	RELEASED TO MFG.	--	48167
			APPR PNE



SCALE 3.000

## RECOMMENDED PCB LAUNCH



## CUSTOMER OUTLINE DRAWING

ALL OTHER SHEETS ARE FOR INTERNAL USE ONLY

<p>UNLESS OTHERWISE SPECIFIED, DIMENSIONS ARE IN METRIC AND TOLERANCES ARE:</p> <table border="1"> <tr> <td>&lt; 0.5mm</td> <td>0.5 - 6mm</td> <td>6 - 30mm</td> <td>30 - 120mm</td> <td>ANGLES</td> </tr> <tr> <td>± 0.05mm</td> <td>± 0.1mm</td> <td>± 0.2mm</td> <td>± 0.3mm</td> <td>± 1°</td> </tr> </table> <p>NOTICE - These drawings, specifications, or other data (1) are, and remain the property of Amphenol Corp., (2) must be returned upon request; and (3) are confidential and not to be disclosed to any person other than those to whom they are given by Amphenol Corp. The furnishing of these drawings, specifications, or other data by Amphenol Corp., or to any other person to anyone for any purpose is not to be regarded by implication or otherwise in any manner licensing, granting rights to permitting such holder or any other person to manufacture, use or sell any product, process or design, patented or otherwise, that may in any way be related to or disclosed by said drawings, specifications, or other data.</p>	< 0.5mm	0.5 - 6mm	6 - 30mm	30 - 120mm	ANGLES	± 0.05mm	± 0.1mm	± 0.2mm	± 0.3mm	± 1°	<p>MATERIAL</p> <p>-</p>	<p>DRAWN</p> <p>S. LI</p>	<p>DATE</p> <p>12-Aug-10</p>	<p>TITLE</p> <p>HD BNC BHD JACK</p> <p>EDGE MOUNT FOR</p> <p>0.062" THICK BOARD</p>	<p>Amphenol RF</p> <p>Danbury CT USA, Tainan, Taiwan, Shenzhen, China</p> <p>www.amphenolrf.com</p>
	< 0.5mm	0.5 - 6mm	6 - 30mm	30 - 120mm	ANGLES										
± 0.05mm	± 0.1mm	± 0.2mm	± 0.3mm	± 1°											
<p>REFERENCE</p> <p>EAR # 3896</p> <p>CONFIGURATION LEVEL:</p>	<p>ENGINEER</p> <p>PADMANABHAN E</p>	<p>DATE</p> <p>29-Jun-10</p>	<p>DATE</p> <p>16-Aug-10</p>	<p>DRAWING NO. 34-1018</p>											
<p>FINISH</p>	<p>Root Folder/HD-BNC/34-1018</p>	<p>APPROVED</p> <p>S. HSIEH</p>	<p>SCALE: 4.0:1.0</p>	<p>SHEET 5 OF 5</p>	<p>ITEM NO. 34-1018</p>										
		<p>CAD FILE</p>	<p>DWG SIZE</p> <p>B</p>	<p>REV</p> <p>A</p>	<p>PART NO. 34-1018</p>										