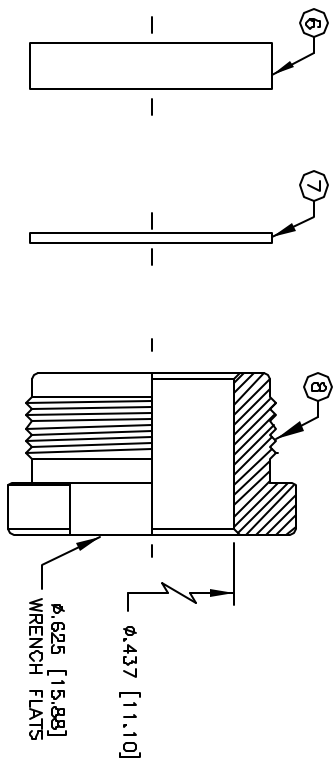
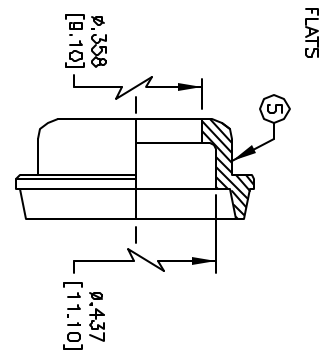
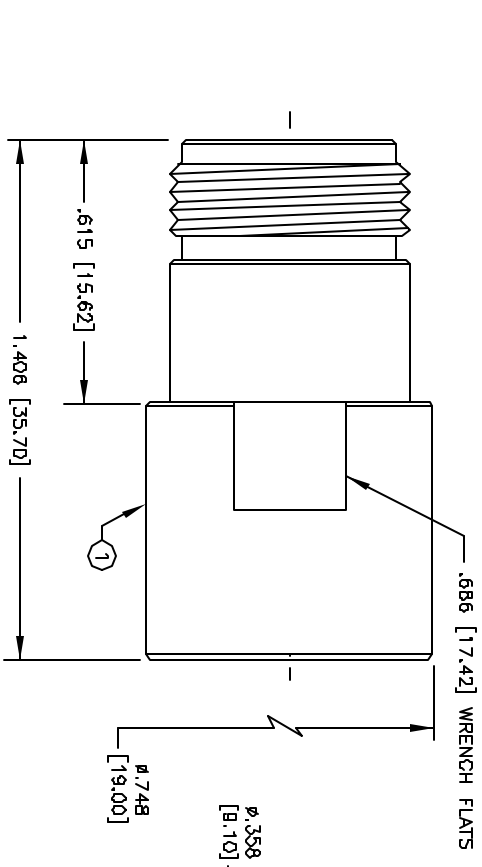
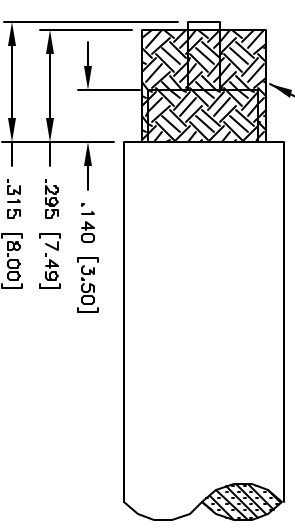


ALL RIGHTS RESERVED. NO PORTION OF THIS PUBLICATION, WHETHER IN WHOLE OR IN PART CAN BE REPRODUCED WITHOUT THE EXPRESS WRITTEN CONSENT OF SPC TECHNOLOGY.

REVISONS		DOC. NO. SPC-F005	Effective: 12/21/98	DCP No: 860				
DCP #	REV	DESCRIPTION	DRAWN	DATE	CHECKD	DATE	APPRVD	DATE
809	A	Released	JWM	2/18/00	JC	3/14/00	DJC	4/5/00



**COMB BRAID FOR CLAMP INSTALLATION**



**SUGGESTED STRIP INSTRUCTIONS**  
**SUGGESTED CRIMP DIE: .128**

**SPECIFICATIONS:**

IMPEDANCE: 50 OHMS  
WORKING VOLTAGE: 1000 VRMS @ SEA LEVEL  
FREQUENCY RANGE: 0-11 GHz  
INSERTION LOSS: S-2 DB @ 10 GHz  
VSWR MAX: 1.3:1 @ 9 GHz  
FOR BELDEN B214, 9913, 9914, RG-B/U TYPE, RG-393/U,  
CAROL C1180, TIMES AA-58B6 & LMR-400 CABLE

ITEM	DESCRIPTION	QTY	MATERIAL	FINISH
8	BACK NUT	1	BRASS	SILVER
7	WASHER	1	BRASS	SILVER
6	GASKET	1	S.I.RUBBER	RED
5	CLAMP	1	BRASS	SILVER
4	WASHER	1	BRASS	SILVER
3	DIELECTRIC	1	TEFLON	NONE
2	CONTACT	1	PHOS BRONZE	GOLD
1	BODY	1	BRASS	SILVER

**DISCLAIMER**  
ALL STATEMENTS AND TECHNICAL INFORMATION CONTAINED HEREIN ARE BASED UPON INFORMATION AND/OR TESTS WE BELIEVE TO BE ACCURATE AND RELIABLE. SOME CONDITIONS OF USE ARE NOT COVERED BY THIS DOCUMENT. THE USER SHALL DETERMINE THE SUITABILITY OF THE PRODUCT FOR THE INTENDED USE AND ASSUME ALL RISK AND LIABILITY WHATSOEVER IN CONNECTION THEREWITH.



UNLESS OTHERWISE SPECIFIED, DIMENSIONS ARE FOR REFERENCE PURPOSES ONLY.

DRAWN BY:	DATE:
Jeff McVicker	2/18/00
CHECKED BY:	DATE:
John Cole	3/14/00
APPROVED BY:	DATE:
Daniel Carey	4/5/00

DRAWING TITLE:		"N" Female Clamp Connector	
SIZE	DWG. NO.	ELECTRONIC FILE	REV
A	SPC4344	84N1268.dwg	A
SCALE:	NTS	U.O.M.: INCHES [mm]	SHEET: 1 OF 1

SPC-F005.DWG