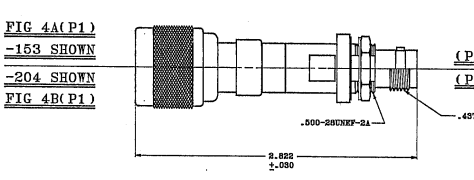
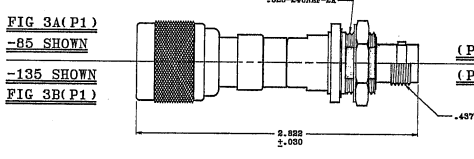
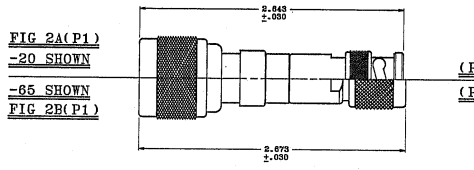
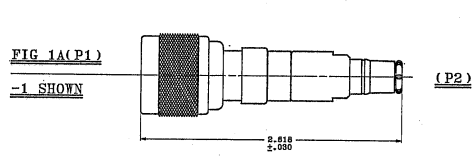
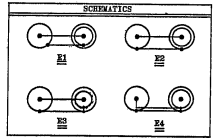


P2 CONN TYPE	P1 CONN TYPE															
	P1A5				P1A6				P1A5S				P1A6S			
NO	21	22	23	24	21	22	23	24	21	22	23	24	21	22	23	24
P1A5	1	-1	-2	-3	-4	-5	-6	-7	-8	-9	-10	-11	-12	-13	-14	-15
P1A6	16	-16	-17	-18	-19	-20	-21	-22	-23	-24	-25	-26	-27	-28	-29	-30
P1A5S	31	-31	-32	-33	-34	-35	-36	-37	-38	-39	-40	-41	-42	-43	-44	-45
P1A6S	46	-46	-47	-48	-49	-50	-51	-52	-53	-54	-55	-56	-57	-58	-59	-60
P1A5	61	-61	-62	-63	-64	-65	-66	-67	-68	-69	-70	-71	-72	-73	-74	-75
P1A6	76	-76	-77	-78	-79	-80	-81	-82	-83	-84	-85	-86	-87	-88	-89	-90
P1A5S	91	-91	-92	-93	-94	-95	-96	-97	-98	-99	-100	-101	-102	-103	-104	-105
P1A6S	106	-106	-107	-108	-109	-110	-111	-112	-113	-114	-115	-116	-117	-118	-119	-120
P1A5	121	-121	-122	-123	-124	-125	-126	-127	-128	-129	-130	-131	-132	-133	-134	-135
P1A6	136	-136	-137	-138	-139	-140	-141	-142	-143	-144	-145	-146	-147	-148	-149	-150
P1A5S	151	-151	-152	-153	-154	-155	-156	-157	-158	-159	-160	-161	-162	-163	-164	-165
P1A6S	166	-166	-167	-168	-169	-170	-171	-172	-173	-174	-175	-176	-177	-178	-179	-180
P1A5	181	-181	-182	-183	-184	-185	-186	-187	-188	-189	-190	-191	-192	-193	-194	-195
P1A6	196	-196	-197	-198	-199	-200	-201	-202	-203	-204	-205	-206	-207	-208	-209	-210

REVISED		DESCRIPTION		DATE	BY	APPROVED
12-10	84					

INCH	MM
.005	0.127
.010	0.254
.020	0.508
.030	0.762
.040	1.016
.050	1.270
.060	1.524
.070	1.778
.080	2.032
.090	2.286
.100	2.540
.125	3.175
.150	3.810
.175	4.445
.200	5.080
.250	6.350
.300	7.620
.375	9.525
.500	12.700
.625	15.875
.750	19.050
.875	22.225
1.000	25.400
1.250	31.750
1.500	38.100
1.750	44.450
2.000	50.800
2.250	57.150
2.500	63.500
2.750	69.850
3.000	76.200



RED INDICATES ORIGINAL

- EXAMPLE OF COMPLETE MODEL NO:
AD - P1A5 - X1 - P1A6
- EXAMPLE OF COMPLETE PART NO:
12-10-1
- BETWEEN SERIES ADAPTER
MALE "N" SERIES TO CONCENTRIC
THRU-ROCKERS MADE BY FEMALE
NUTHEAD TO SERIES
- FINISH: TYP-1A (NICKEL)
- ALL DIM ARE IN INCHES

QTY	DESCRIPTION	PART NUMBER	ITEM
100	ADAPTER WALL IMPROVED IN CONCENTRIC THROUGH-ROCKERS MADE BY FEMALE NUTHEAD TO SERIES		
100	TROMPETER ELECTRONICS, INC.		
100	MATERIAL	14949	12-10
100	DATE	12-10-68	12-10
100	SCALE	2:1	12-10
100	DATE	12-10-68	12-10
100	SHEET	1	2