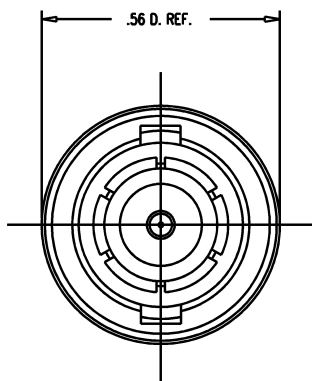
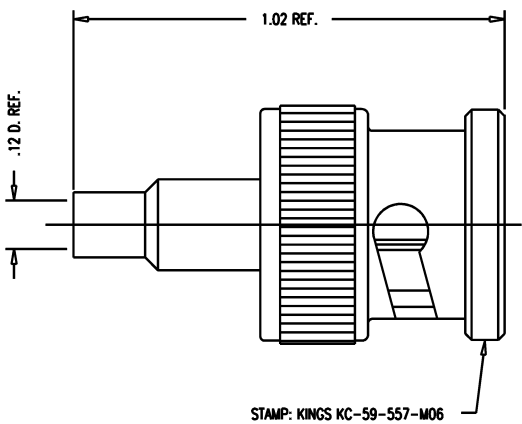


DASH NO.	M CODE	MADE FROM
----------	--------	-----------

GSD

KC-59-557-M06

REVISIONS	
ISSUE	CHANGES
4	CN 36487 E REDRAWN KH 07/31/95
5	CN 37053 D JJS 07/08/96



STAMP: KINGS KC-59-557-M06

- NOTES:
- FOR USE WITH RG-174, 179, 187, 188 & 316 CABLE GROUPS.
 - FOR CABLING INSTRUCTIONS SEE CP-5407.
 - FOR CRIMPING USE DIE KTH-2138.
 - INTERFACE PER MIL-STD-348, FIG. 301-1.
 - MARK PACKAGE: KINGS KC-59-557-M06
XXX (DATE CODE)
 - MATERIALS:
INSULATORS: TEFLON, ASTM-D-4894
GASKET: SIL. RUB., Z2-R-765
K-GRIP SLEEVE: COM. BRONZE, ASTM-B-135
SPRING WASHER } BER COP., ASTM-B-196
OUTER CONTACT }
ALL OTHER PARTS: BRASS, ASTM-B16
 - FINISHES:
SPRING WASHER : SILVER PLATE PER QQ-S-365
CENTER CONTACT : HARD GOLD PLATE PER MIL-G-45204
ALL METAL PARTS: KINGS TARNISH RESISTANT NICKEL FINISH (TR-5)
 - ELECTRICAL CHARACTERISTICS:
NOMINAL IMPEDANCE: 50 OHMS
VOLTAGE RATING: 500 VRMS
FREQUENCY RANGE: DC TO 4 GHz

KAM5936

SCALE 4:1	
APPROX SURFACE AREA	
WAS: E-7339	
USED ON	
REF:	
PLUG, BNC	
DRAWN KH	DATE 07/31/95
DESIGN MJB	DATE 08/01/95
APPR.	DATE
 ELECTRONICS CO., INC. TUCKAHOE, NEW YORK 10707	
KC-59-557-M06	

GSD