

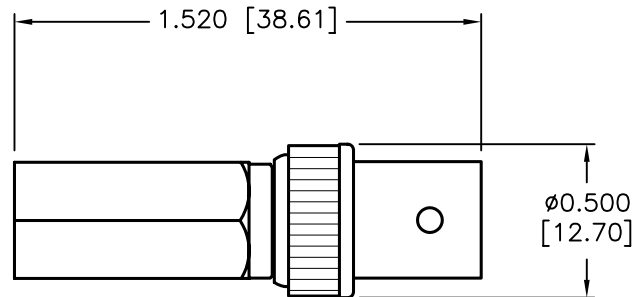
DCP #		REV	DESCRIPTION	DRAWN	DATE	CHECKD	DATE	APPRVD	DATE
755		B	Redrawn	SAS	6/25/99	JC	6/25/99	JC	6/25/99
1897		B	Redrawn & RoHS	DCM	1/15/07	JWM	2/26/07	JWM	2/26/07

**SPECIFICATIONS**



**Electrical Characteristics**

Impedance: 50 Ohms Nominal  
 Frequency Range: 0~4 GHz  
 Working Voltage: 500 volts RMS at sea level  
 Dielectric Withstanding Voltage: 1500 Volts RMS at sea level  
 Corona Level: 375 vols minimum at 70,000 feet  
 Contact Resistance: Outer - 0.2 milliohms maximum  
 Center - 2.1 milliohms maximum  
 Insulation Resistance: 5000 Megohms minimum



**Environmental Characteristics**

Recommended Temp. Range: -55°C ~ 85°C  
 Moisture Resistance: MIL-STD-202

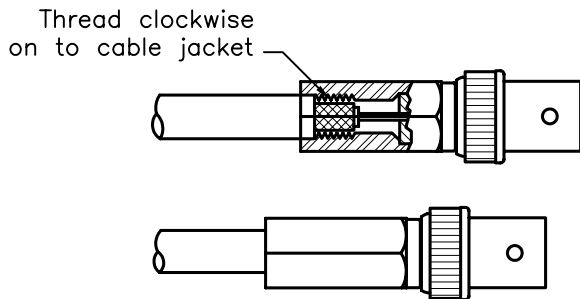
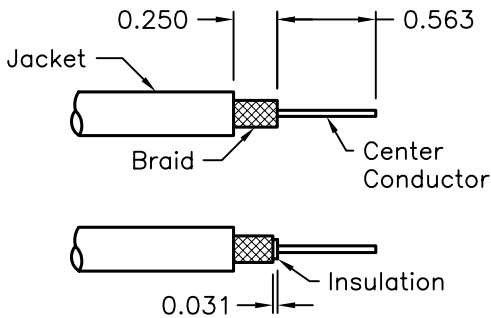
**Mechanical Characteristics**

Durability: 500 Cycles  
 Force to engage/disengage: 3 lbs maximum



**Instructions:**  
 Cable Type: RG-59-62, Solid Conductor  
 Wire Gauge: 22 (0.025)  
 Jacket O.D.: 0.220 ~ 0.250 [5.59~6.35]

1. Identify Connector parts. (1 piece)
2. Trim Cable as shown. Taking care not to nick the center conductor or outer braid.
3. Use the fingernail to rotate the outer braids clockwise such that 1/32 inch of insulation is bared. Then in the same direction rub the stray braids flat. (Stray or loose braids can cause shorts)
4. Gently insert the center conductor down the back end of the connector, feeding it into the guide hole. (If the center conductor is not in place, about 1/8 inch of the center conductor - the part closest to the dielectric - will still be viewable)
5. Firmly push the cable hone (a slight clockwise twist may help with insertion) Then screw the connector on the cable in a clockwise direction until it is snugly attached to the jacket.



**CAUTION**

- Connector is designed for solid center conductor wire. RG-58 cable will need the center conductor tip dipped if it is not a solid conductor. This is necessary to provide extra support for step 5.
- RG-MATV-59 cable will require caution when using the fingernail to rotate the braids on cable types that include aluminum foil for the outer conductor. DO NOT tear or rip the foil conductor to the 1/32 inch as suggested by step 3.
- RG-62 cable includes trimming the filament to 9/16 inch as well. Make sure the filament does not unravel so that it protrudes past this dimension.

SPC-F004.DWG

TOLERANCES: UNLESS OTHERWISE SPECIFIED, DIMENSIONS ARE FOR REFERENCE PURPOSES ONLY.	DRAWN BY:	DATE:	DRAWING TITLE:			
	JC	07/31/91	BNC, Straight, Twist-On, Jack			
	CHECKED BY:	DATE:	SIZE	DWG. NO.	ELECTRONIC FILE	REV
			A	CPFI-UG89-2	81N5438.dwg	C
APPROVED BY:	DATE:	SCALE: NTS		U.O.M.: INCHES [mm]	SHEET: 1 OF 1	