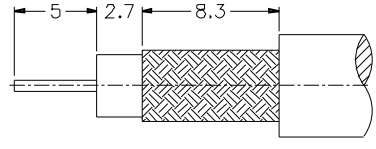
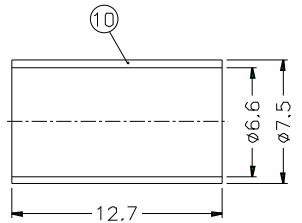
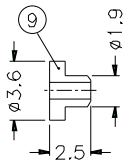
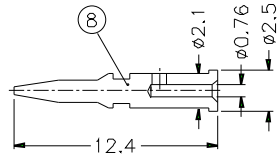
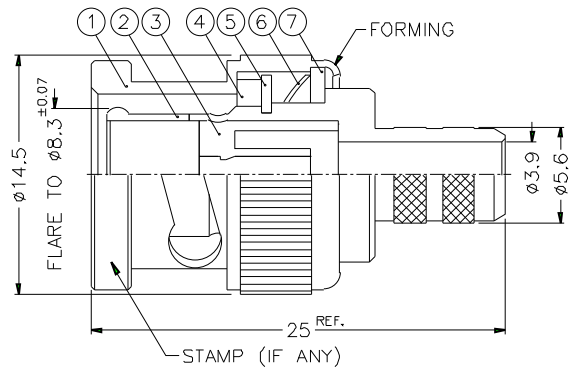


ISS		ZONE		REVISIONS			
				DESCRIPTION	PER	REQUEST	DATE
1		2					
3							



RECOMMENDED
CABLE STRIPPING DIM'S



- NOTES: FINISH (PLATING THICKNESS IN MICRO-INCHES)
1. BRASS PER QQ-B-626
 2. BRASS PER QQ-B-613
 3. NICKEL PL., 100 MIN. THICK OVER COPPER STRIKE
 4. NICKEL PL., 200 MIN. THICK OVER COPPER STRIKE
 5. GOLD PL., 3 MIN. THICK OVER NICKEL PL., 100 MIN. THICK OVER COPPER STRIKE
 6. JIS H 3250, C 2700

1. CRIMPED FERRULE
HEX CRIMP SIZE .255"
2. CRIMPED CONTACT PIN,
HEX CRIMP SIZE .068"

10	FERRULE	NOTE 6	NOTE 3	1	FR-75/66X127
9	INSULATOR	DELTRIN	NATURAL	1	B50000-11-36/1
8	CONTACT PIN	NOTE 1	NOTE 5	1	B50000-8-25/076
7	WASHER	NOTE 2	NOTE 3	1	WS-128/9X08
6	SPRING	SK5	NOTE 4	1	B50000-6
5	RETAINER RING	NOTE 1	NOTE 3	1	B50000-5
4	GASKET	RUBBER	RED	1	GS-115/8X15
3	INSULATOR	DELTRIN	NATURAL	1	B50000-3-75-A
2	BODY	NOTE 1	NOTE 3	1	B50000-2-56/39
1	SHELL	NOTE 1	NOTE 3	1	B50000-1-B

DIMENSIONS ARE IN MILLIMETERS
UNLESS OTHERWISE SPECIFIED
TOLERANCES
0.5-6 = ±0.2
6-30 = ±0.4
30-120 = ±0.6
120-315 = ±1
315-1000 = ±1.6
1000-2000 = ±2.4

PART NO.	B1121A1ND3G375
APPROVED	DATE 10-11-01'
CHECKED	DATE 10-11-01'
DRAWN	DATE 10-11-01'

Amphenol	
TITLE	BNC CRIMP PLUG
DRAWING NO.	KJ-B1121A1-ND3G-62AU-75
ITEM NO.	

NO.	DESCRIPTION	MATERIAL	FINISH	Q'TY	DRAWING NO.	SCALE	3/1	ISSUE	A	FILE NO.
1										
2										
3										
4										
5										
6										
7										
8										