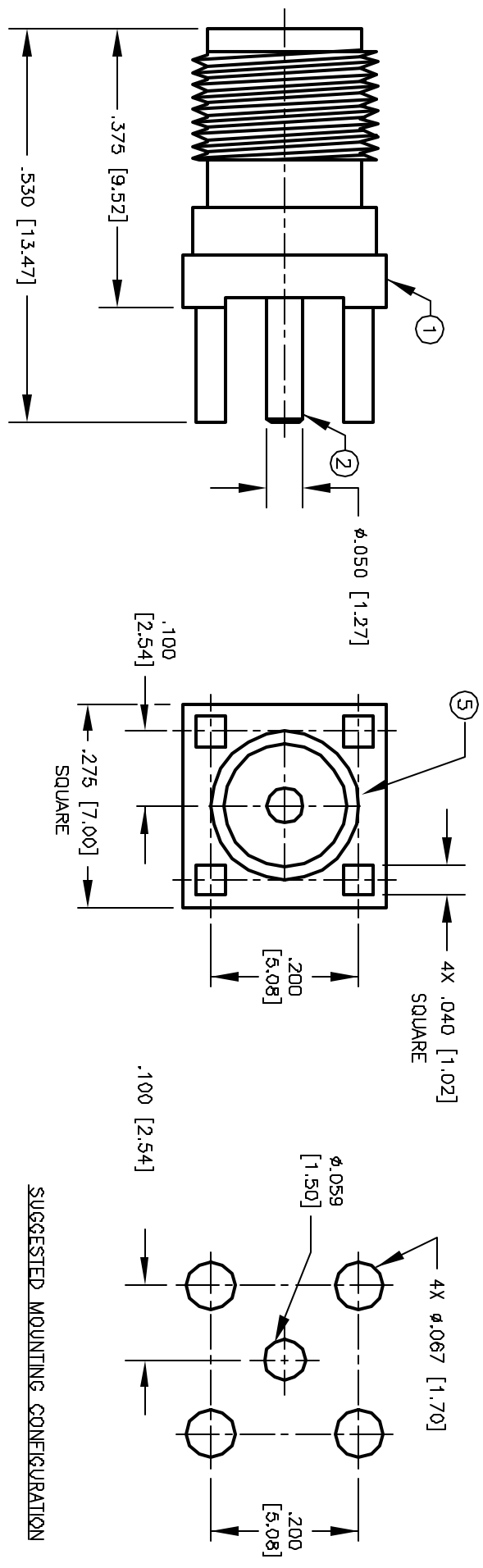


ALL RIGHTS RESERVED. NO PORTION OF THIS PUBLICATION, WHETHER IN WHOLE OR IN PART CAN BE REPRODUCED WITHOUT THE EXPRESS WRITTEN CONSENT OF SPC TECHNOLOGY.

REVISIONS			DOC. NO.	SPC-F005	Effective:	12/21/98	Doc No.	880
DCP #	REV	DESCRIPTION	DRAWN	DATE	CHECKD	DATE	APPRVD	DATE
428	B	CHANGE ELECTRONIC FILE NAME	DJC	2/12/98	JC	2/17/98	JC	2/17/98
665	C	ADD STEP ON LEGS	DJC	1/18/99	JC	1/20/99	JC	1/20/99



SPECIFICATIONS:

IMPEDANCE: 50 OHMS

ITEM	DESCRIPTION	QTY	MATERIAL	FINISH
5	PRESS FIT WASHER	1	BRASS	NICKEL
4	DIELECTRIC	1	TEFLON	NONE
3	DIELECTRIC	1	TEFLON	NONE
2	CONTACT	1	BERILLIUM COPPER	GOLD
1	BODY	1	BRASS	NICKEL

DISCLAIMER
 ALL STATEMENTS AND TECHNICAL INFORMATION CONTAINED HEREIN ARE BASED UPON INFORMATION AND/OR TESTS WE BELIEVE TO BE ACCURATE AND RELIABLE. SOME CONDITIONS OF USE ARE NOTED ON OUR DRAWINGS. THE USER SHALL DETERMINE THE SUITABILITY OF THE PRODUCT FOR THE INTENDED USE AND ASSUME ALL RISK AND LIABILITY WHEREVER IN CONNECTION THEREWITH.

SPC TECHNOLOGY

UNLESS OTHERWISE SPECIFIED, DIMENSIONS ARE FOR REFERENCE PURPOSES ONLY.

DRAWN BY: DANIEL CAREY
 CHECKED BY: JOHN COLE
 APPROVED BY: BRETT BRAATZ

DATE: 4/2/97
 DATE: 4/8/97
 DATE: 4/16/97

DRAWING TITLE: SMA FEMALE VERTICAL PCB MOUNT

SIZE: A
 DWG. NO.: 8589-0844
 SCALE: NTS

ELECTRONIC FILE: 16N2726.DWG
 REV: C

SHEET: 1 OF 1