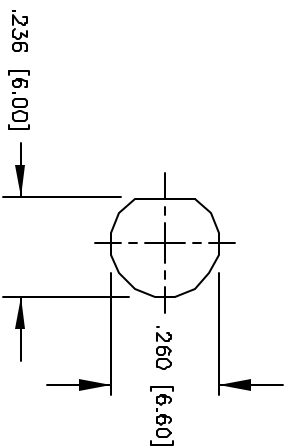
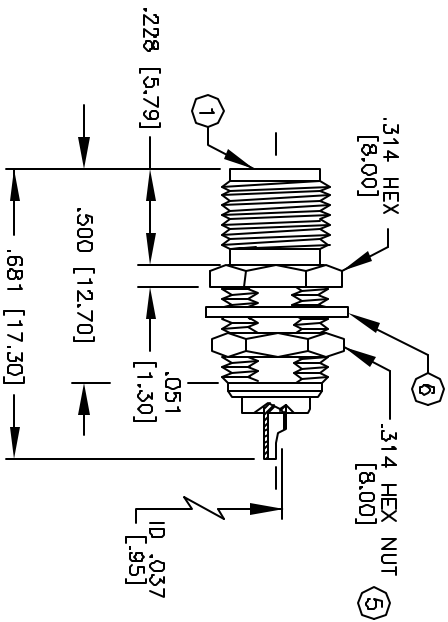


© COPYRIGHT 1997 BY SPC TECHNOLOGY. ALL RIGHTS RESERVED. NO PORTION OF THIS PUBLICATION, WHETHER IN WHOLE OR IN PART CAN BE REPRODUCED WITHOUT THE EXPRESS WRITTEN CONSENT OF SPC TECHNOLOGY.



RECOMMENDED MOUNTING HOLE
 .126 [3.20] MAXIMUM PANEL THICKNESS

SPECIFICATIONS:

IMPEDANCE: 50 OHMS
 WORKING VOLTAGE: 335 VRMS @ SEA LEVEL
 FREQUENCY RANGE: 0-12.4 GHz

ITEM	DESCRIPTION	QTY	MATERIAL	FINISH
6	LOCK WASHER [LKW-250]	1	BRASS	NICKEL
5	HEX NUT [HEX-250-36S]	1	BRASS	NICKEL
4	DIELECTRIC	1	TEFLON	NONE
3	DIELECTRIC	1	TEFLON	NONE
2	PIN	1	BERILLIUM COPPER	GOLD
1	BODY	1	BRASS	NICKEL

REVISIONS			DOC. NO.	SPC TECHNOLOGY		Total Pages: 2	
DCP #	REV	DESCRIPTION	Effective	DATE	CHECKD	DATE	APPRVD
18	A	RELEASED	3/3/97	4/2/97	J.C.	4/8/97	B.B.
428	B	CHANGE ELECTRONIC FILE NAME	DJC	2/12/98	JC	2/17/98	JC

DISCLAIMER
 ALL STATEMENTS AND TECHNICAL INFORMATION CONTAINED HEREIN ARE BASED UPON INFORMATION AND/OR TESTS WE BELIEVE TO BE ACCURATE AND RELIABLE. SINCE CONDITIONS OF USE ARE BEYOND OUR CONTROL, THE USER SHALL DETERMINE THE SUITABILITY OF THE PRODUCT FOR THE INTENDED USE AND ASSUME ALL RISK AND LIABILITY WHATSOEVER IN CONNECTION THEREWITH.



DRAWING TITLE:
SMA FEMALE BULKHEAD, SOLDER, FRONT MOUNT

DRAWN BY:	DATE:
DANIEL CAREY	4/2/97
CHECKED BY:	DATE:
JOHN COLE	4/8/97
APPROVED BY:	DATE:
BRETT BRAATZ	4/16/97

SIZE	DWG. NO.	CAD FILE	REV
A	8589-0839	16N2721.DWG	B
SCALE:	NTS	U.O.M.: INCHES [mm]	SHEET: 1 OF 1