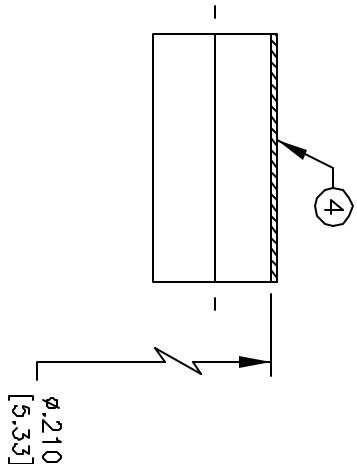
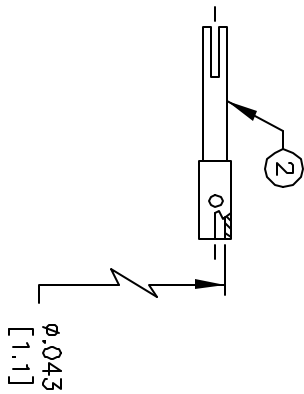
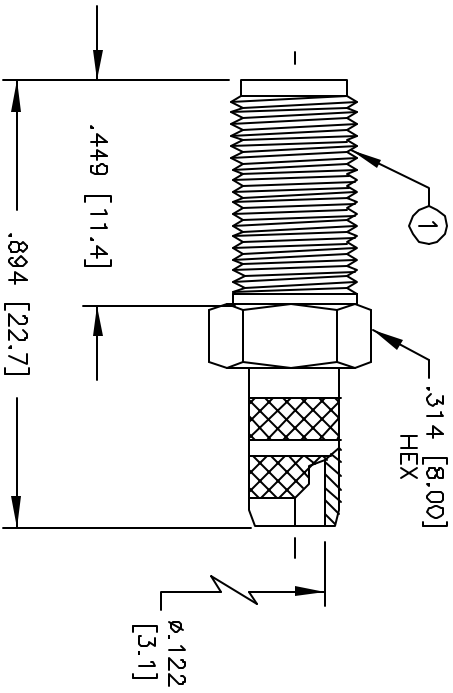


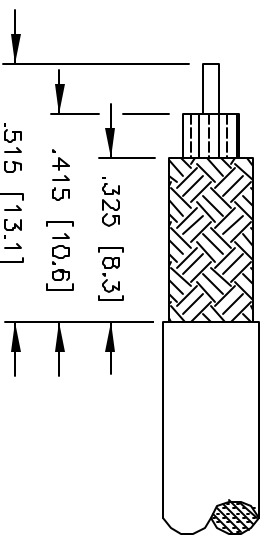
REVISIONS			DOC. NO. SPC-FD05, Total Pages: 2
DCP #	REV	DESCRIPTION	Effective: 3/3/97, DCP Nos: 103 Supersedes DCP No: 97
428	B	CHANGE ELECTRONIC FILE NAME	DJC 2/12/98 JC 2/17/98 JC 2/17/98
565	C	REMOVED FLATS FROM ITEM 1	DJC 7/2/98 JC 7/6/98 JC 7/6/98



SPECIFICATIONS:

IMPEDANCE: 50 OHMS
 WORKING VOLTAGE: 375 PEAK @ SEA LEVEL
 FREQUENCY RANGE: 0-12.4 GHZ
 INSERTION LOSS: ≤-.2 DB @ 6 GHZ
 VSWR MAX: 1.3:1 @ 12 GHZ
 FOR RG-58, 58A, 58C, 141, 141A, 400/U, BELDEN 8240,
 8259, 8262, 9201, 9203, 9310, 9311,
 COMM/SCOPE 0268 & CUSHCRAFT ULTRALINK TL92463E
 INTERFACE PER MIL-STD-348A, SECTION 310.2

ITEM	DESCRIPTION	QTY	MATERIAL	FINISH
4	FERRULE	1	BRASS	NICKEL
3	DIELECTRIC	1	TEFLON	NONE
2	CONTACT	1	BERILLIUM COPPER	GOLD
1	BODY	1	BRASS	NICKEL



SUGGESTED STRIPPING INSTRUCTIONS
 RECOMMENDED CRIMP DIE: .213
 CONTACT TO BE SOLDERED

DISCLAIMER
 ALL STATEMENTS AND TECHNICAL INFORMATION CONTAINED HEREIN ARE BASED UPON INFORMATION AND/OR TESTS WE BELIEVE TO BE ACCURATE AND RELIABLE. SINCE CONDITIONS OF USE ARE BEYOND OUR CONTROL, THE USER SHALL DETERMINE THE SUITABILITY OF THE PRODUCT FOR THE INTENDED USE AND ASSUME ALL RISK AND LIABILITY WHATSOEVER IN CONNECTION THEREWITH.



SMA FEMALE CRIMP

DRAWN BY:	DANIEL CAREY	DATE:	4/1/97
CHECKED BY:	JOHN COLE	DATE:	4/8/97
APPROVED BY:	BRETT BRAATZ	DATE:	4/16/97

DRAWING TITLE:		SIZE	DWG. NO.	CAD FILE	REV
SMA FEMALE CRIMP		A	8589-0836	16N2718.DWG	C
SCALE:	NTS	U.O.M.: INCHES [mm]		SHEET:	1 OF 1