

MATERIALS AND FINISHES:

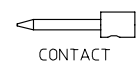
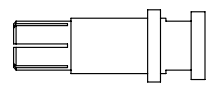
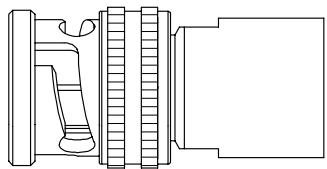
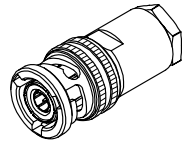
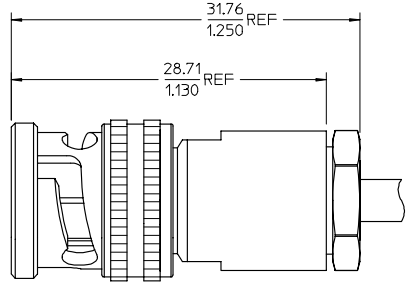
BODY, CLAMP BODY, CLAMP, NUT, C'NUT, WASHER: BRASS
PLATED: NICKEL

CENTER/INTERMEDIATE CONTACT: BRASS
PLATED: GOLD

INSULATOR: TEFLON

SPRING WASHER: BeCu
PLATED: NICKEL

GASKET: SILICONE RUBBER

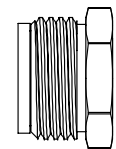
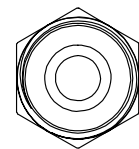
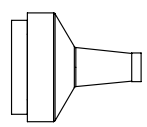
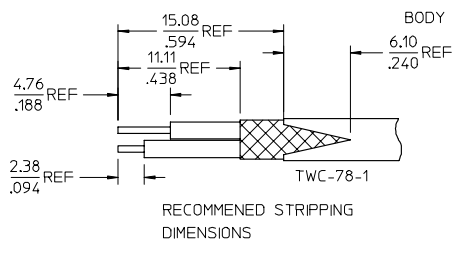


INTERMEDIATE CONTACT

FRONT INSULATOR

CONTACT

REAR INSULATOR



CLAMP BODY/INS

CLAMP/NUT

73175-0021	73175-0020, ONE PER BAG
73175-0020	BULK
PART NO.	PACKAGING

MIL-STD-348A, FIG. 201-1	INTERFACE
SPECIFICATION	DESCRIPTION

CHG: NEW RELEASE
EC NO: URF2008-0108
DRAWN: FLAHERTY 2007/08/17
CHKD: SHAR 2007/08/17
APPR: JWEINER 2007/08/17

QUALITY SYMBOLS	GENERAL TOLERANCES (UNLESS SPECIFIED)	DIMENSION STYLE	SCALE	DESIGN UNITS	THIRD ANGLE PROJECTION
▽=0	mm INCH	MM/IN		METRIC	
▽=0	4 PLACES ± .005 ± .005	DRAWN BY DATE	SSS 2003/12/19	TITLE	TRIAX PLUG STR 3 LUG TWC-78-1 TWINAX CABLE TRIAX-PC
	3 PLACES ± .005 ± .005	CHECKED BY DATE	TEF 2003/12/19	APPROVED BY DATE	MOLEX MOLEX INCORPORATED
	2 PLACES ± .005 ± .005	APPROVED BY DATE	GMH 2003/12/17	MATERIAL NO.	SD-73175-002
	1 PLACE ± .005 ± .005	ANGULAR ± 2 °		DOCUMENT NO.	1 OF 1
				THIS DRAWING CONTAINS INFORMATION THAT IS PROPRIETARY TO MOLEX INCORPORATED AND SHOULD NOT BE USED WITHOUT WRITTEN PERMISSION	