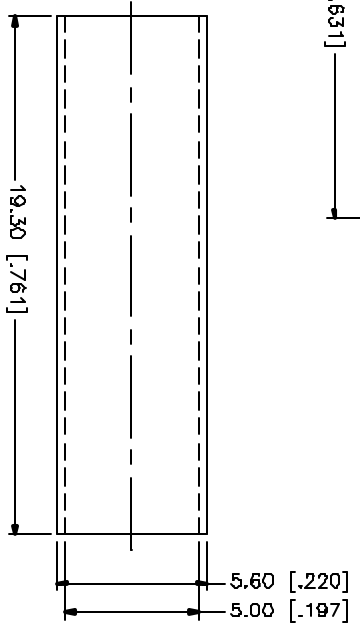
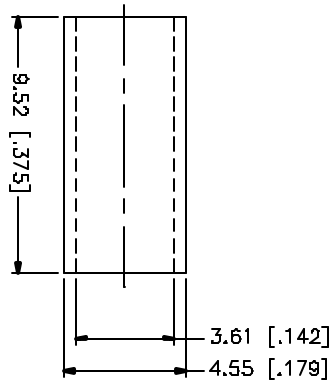
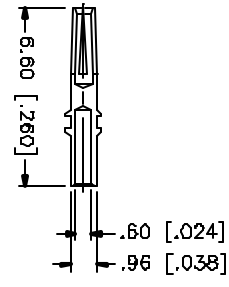
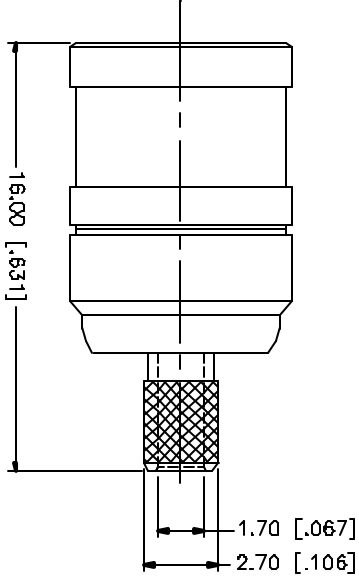
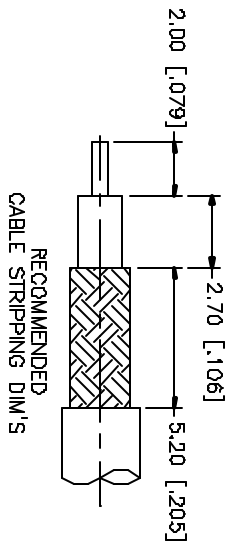


REV.	DATE	DESCRIPTION
D	05/01/04	REFORMAT DRAWING



- NOTE:
1. CRIMPED FERRULE  
HEX CRIMP SIZE .151"
  2. CONTACT PIN TO SOLDER

**Amphenol Connex**

PART DESCRIPTION  
SMB CRIMP PLUG  
(FOR RG-316/U DOUBLE BRAID CABLE)

PART NO. 142183

QTY	FINISH	MATERIAL	DESCRIPTION
1	NICKEL	BRASS	FERRULE
1	GOLD	PHOS. BRONZE	CONTACT PIN
1	NATURAL	TEFLON	INSULATOR
1	NICKEL	BRASS	HOUSING/BODY

APPROVALS	DATE
DRWN G.R.S.	05/01/04
CHECKED	
ISSUED	
SHEET 1 OF 1	

UNLESS SPECIFIC GEOMETRIC DIMENSIONS ARE IN MILLIMETERS DIMENSIONS IN [ ] ARE IN INCHES AND FOR CENTER REFERENCE ONLY.
UNLESS SPECIFIC GEOMETRIC DIMENSIONS ARE INDICATED FOR MILLIMETER AND INCH DIMENSIONS FOR INCHES ARE:
4.5 - 8mm ± 0.20mm
8 - 30mm ± 0.40mm
30 - 120mm ± 0.50mm
UNLESS SPECIFIC GEOMETRIC DIMENSIONS ARE INDICATED FOR MILLIMETER AND INCH DIMENSIONS FOR INCHES ARE:
.020 - .315 ± ± 0.002"
.315 - 1.180 ± ± 0.015"
1.180 - 4.724 ± ± 0.020"
DO NOT SCALE DRAWINGS
DWG. NO. 142183.DWG
REV. D
SIZE A
SCALE NA