

ALL RIGHTS RESERVED. NO PORTION OF THIS PUBLICATION, WHETHER IN WHOLE OR IN PART CAN BE REPRODUCED WITHOUT THE EXPRESS WRITTEN CONSENT OF SPC TECHNOLOGY.

REVISONS		DOC. NO. SPC-F005	Effective 12/21/98	DCP No. B90				
DCP #	REV	DESCRIPTION	DRAWN	DATE	CHECKED	DATE	APPROVD	DATE
B44	A	RELEASED	I.T.		DEK	4/21/83		
B44	B	REDRAWN & UPDATED	HYD	12/14/99	JC	12/21/99	JC	12/21/99

Specifications

Environmental

- Temperature Range: -65°C to +125°C

Mechanical

- Insulator Material: Glass filled polyester, black, UL94V-0

- Contact Material: Phosphor Bronze

- Contact Plating: 10m" gold

- Contact Insertion Force: 6.2 oz [1.7 N] Typ

- Contact Extraction Force: 10.6 oz [2.9 N] MAX

- Contact Extraction Force: 1.8 oz [0.5 N] Typ

- Contact Extraction Force: 0.7 oz [0.2 N] Min

- Recommended Mating Pin Size: .022 [0.56] x .020 [0.51] Max

.010 [0.25] x .008 [0.20] Min

.010 [0.25] x .008 [0.20] Min

Electrical

- Current Rating: 1 Amp

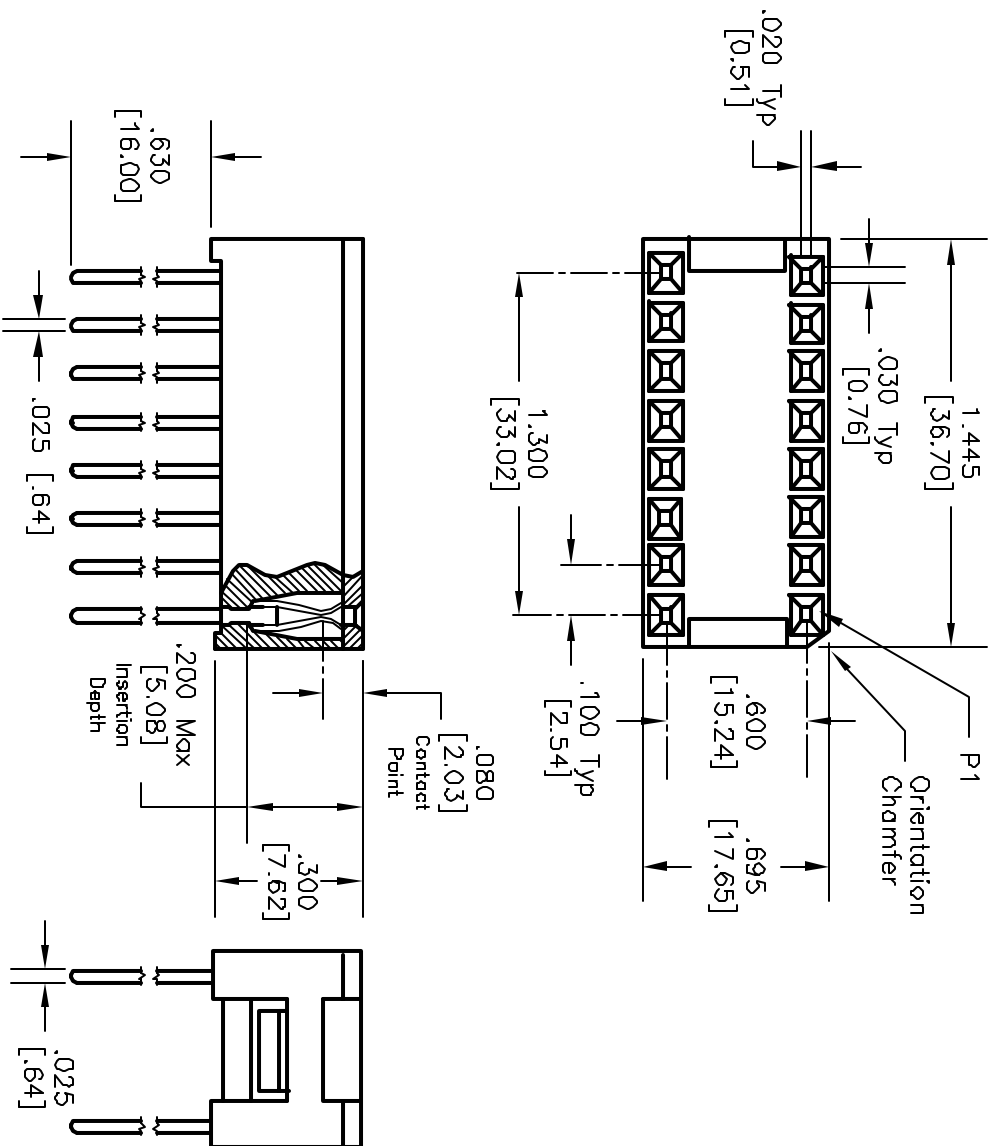
- Voltage Rating: 250 Vrms

- Dielectric Withstanding Voltage: 500 Vrms Min

- Insulation Resistance: >5000 Megohms

- Contact Resistance: 10 milliohms Typ

30 milliohms Max



DISCLAIMER:
ALL STATEMENTS AND TECHNICAL INFORMATION CONTAINED HEREIN ARE BASED UPON INFORMATION AND/OR TESTS WE BELIEVE TO BE ACCURATE AND RELIABLE. SINCE CONDITIONS OF USE ARE BEYOND OUR CONTROL, THE USER SHALL DETERMINE THE SUITABILITY OF THE PRODUCT FOR THE INTENDED USE AND ASSUME ALL RISK AND LIABILITY WHOSEVER IN CONNECTION THEREWITH.



Tolerances Unless
Otherwise Specified

decimals

.XX ± .015

.XXX ± .005

DRAWING TITLE:		DRAWING NO.		SCALE:	
28 Position DIP Socket .300 High Wrap Tail		A		NTS	
DRAWN BY:	DATE:	CHECKED BY:	DATE:	APPROVED BY:	DATE:
I.T.		DEK	4/21/83		
ELECTRONIC FILE		SHEET: 1 OF 1		REV	
31N2928.dwg		B			