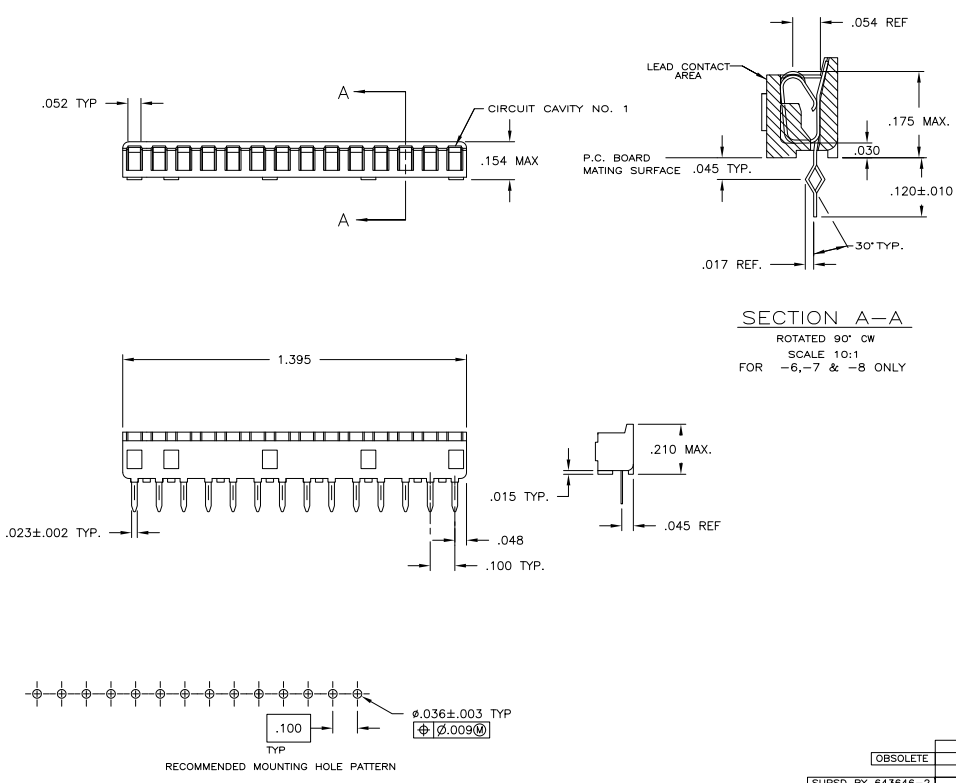


THIS DRAWING IS UNPUBLISHED
 ALL RIGHTS RESERVED

REV	DATE	DESCRIPTION	BY	CHK
FT 64	KT	REVISED PER EDD-11-004917	11MR11	RK HMR



- RECEPTACLE ACCEPTS AN .008-.014 THK. I.C. LEAD.
- TWO .000030 MIN. THK. GOLD STRIPES IN CONTACT AREA, TIN-LEAD(93-7) ON CONTACT LEGS, BALANCE OF CONTACT NICKEL PLATED.
- TWO .000015 MIN. THK. GOLD STRIPES IN CONTACT AREA, TIN-LEAD(93-7) ON CONTACT LEGS, BALANCE OF CONTACT NICKEL PLATED.

SECTION A-A
 ROTATED 90° CW
 SCALE 10:1
 FOR -6, -7 & -8 ONLY

SECTION A-A
 ROTATED 90° CW
 SCALE 10:1
 FOR -1, -2 & -3 ONLY

OBSOLETE	TINNED	PHOS.BRZ.	GLASS-FILLED THERMOPLASTIC, 94V-0, BLACK	643646-9
	A	BE.CU.	GLASS-FILLED THERMOPLASTIC, 94V-0, BLACK	643646-7
SUPSD BY 643646-2	TINNED	PHOS.BRZ.	GLASS-FILLED THERMOPLASTIC, 94V-0, BLACK	643646-6
	A	PHOS.BRZ.	GLASS-FILLED THERMOPLASTIC, 94V-0, BLACK	643646-4
OBSOLETE	TINNED	PHOS.BRZ.	GLASS-FILLED THERMOPLASTIC, 94V-0, BLACK	643646-3
	A	BE.CU.	GLASS-FILLED THERMOPLASTIC, 94V-0, BLACK	643646-2
OBSOLETE	TINNED	PHOS.BRZ.	GLASS-FILLED THERMOPLASTIC, 94V-0, BLACK	643646-1
	A	BE.CU.	GLASS-FILLED THERMOPLASTIC, 94V-0, BLACK	643646-1

CONTACT FINISH	CONTACT MAT'L	HOUSING MATERIAL	PART NO.
TINNED	PHOS.BRZ.	GLASS-FILLED THERMOPLASTIC, 94V-0, BLACK	643646-9
A	BE.CU.	GLASS-FILLED THERMOPLASTIC, 94V-0, BLACK	643646-7
TINNED	PHOS.BRZ.	GLASS-FILLED THERMOPLASTIC, 94V-0, BLACK	643646-6
A	PHOS.BRZ.	GLASS-FILLED THERMOPLASTIC, 94V-0, BLACK	643646-4
TINNED	PHOS.BRZ.	GLASS-FILLED THERMOPLASTIC, 94V-0, BLACK	643646-3
A	BE.CU.	GLASS-FILLED THERMOPLASTIC, 94V-0, BLACK	643646-2
TINNED	PHOS.BRZ.	GLASS-FILLED THERMOPLASTIC, 94V-0, BLACK	643646-1
A	BE.CU.	GLASS-FILLED THERMOPLASTIC, 94V-0, BLACK	643646-1

THIS DRAWING IS A CONTROLLED DOCUMENT. DATE: 8-11-84

WORKS: 108-1066

TE Connectivity

SOCKET ASSY, SIP, 14 POS, DIPLOMATE DL

114-1049

DATE: 100779

CUSTOMER DRAWING