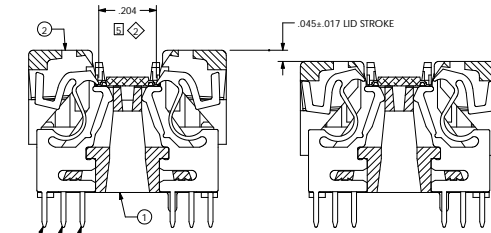
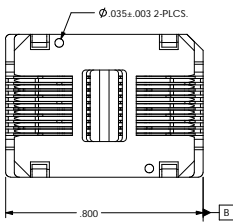
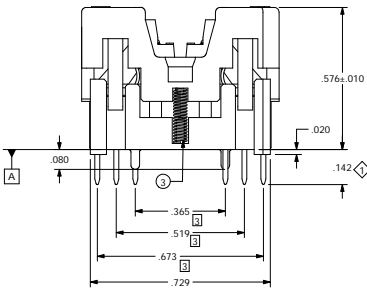
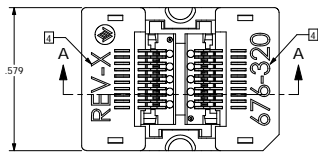
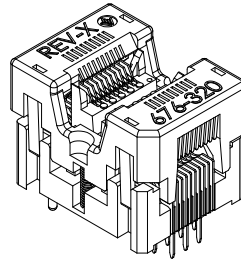
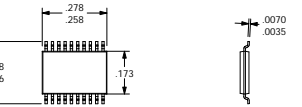
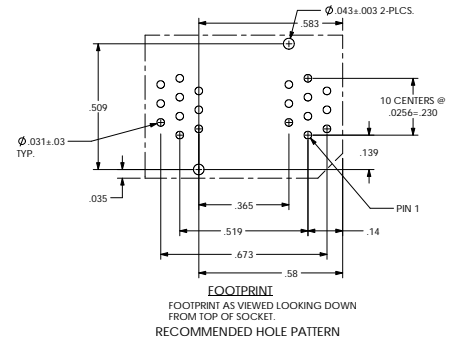


A	C	P	REV	DATE	BY	ECN#	REV	DATE	BY	ECN#	REV	DATE	BY	ECN#
X	X	X	C1	4-12-01	KM	01-0122	C2	4-5-01	KM	01-0199	C3	3-5-01	KM	01-0226



SECTION A-A
SOCKET IN CLOSED POSITION WITH CUSTOMERS DEVICE. SECTION A-A
SOCKET FULLY ACTUATED WITH CUSTOMERS DEVICE.



1 NOSE TO NOSE DIMENSION WITH OUT DEVICE
2 MARK IN .079 (2.0mm) HIGH LETTERS IN APPROXIMATE LOCATION AS SHOWN. INSERT THE REVISION LETTER OF THIS DRAWING IN PLACE OF THE LETTER 'X'. THE TABLE SHOWS THE SIGNIFANCE OF THE PART NUMBER PRINTING.

3 .003 B
2 SOCKET MUST MEET REQUIREMENTS OF WELLS-CTI ENG. SPEC #ES-P-676.
1 AFTER ASSEMBLY CONTACT TAILS MUST MEET POSITIONAL TOL. PER PIN GAGE #T-0657.

SERIES #	PKG. WIDTH	CONTACT QTY.
676	3	20

LEGEND		THIS DOCUMENT CONTAINS PROPRIETARY INFORMATION THAT IS THE SOLE PROPERTY OF WELLS-CTI. THIS INFORMATION IS TO BE HELD BY ITS RECIPIENT AS A CONFIDENTIAL AND IS NOT TO BE REPRODUCED OR DISSEMINATED IN ANY MANNER WITHOUT WRITTEN CONSENT OF WELLS-CTI.	MATERIAL / FINISH	DATE	DATE	DATE	DATE	DATE	DATE	DATE	DATE	
◇	CRITICAL			RESK	2-11-95	RESK	2-11-95	RESK	2-11-95	RESK	2-11-95	RESK
3	TOTAL NO. OF USES		HOHULIN	3-10-95	HOHULIN	3-10-95	HOHULIN	3-10-95	HOHULIN	3-10-95	HOHULIN	3-10-95
PROJECTION			P.C.	2-17-95	P.C.	2-17-95	P.C.	2-17-95	P.C.	2-17-95	P.C.	2-17-95
D			TOLERANCES	3-14-95	T.L.	3-14-95	T.L.	3-14-95	T.L.	3-14-95	T.L.	3-14-95
			DO NOT SCALE									
			SCALE	3-14-95	D.R.M.	3-14-95	D.R.M.	3-14-95	D.R.M.	3-14-95	D.R.M.	3-14-95

ITEM	PART NUMBER	QTY	DESCRIPTION
1	9473002	1	BASE
2	9606001	1	LID
3	2076001	2	.057 X .313 COMP. SPR
5	1108012	8	CONTACT
6	1108011	8	CONTACT
7	1108013	8	CONTACT

REV	DATE	DESCRIPTION
C3		WELLS-CTI