

4

3

2

1

THIS DRAWING IS UNPUBLISHED. RELEASED FOR PUBLICATION SEPT ,2005.
 © COPYRIGHT 2005 BY TYCO ELECTRONICS CORPORATION. ALL RIGHTS RESERVED.

LOC	DIST	REVISIONS			
P	LTR	DESCRIPTION	DATE	DWN	APVD
C		ECR-05-010729	07SEPT05	JMS	FWK

NOTES:

- ⚠ PACK IN ACCORDANCE WITH AMP SPEC 107-3275
- ⚠ 100 TRAY PACK IN ACCORDANCE WITH AMP SPEC 107-3275
- ⚠ Au PLATING OVER Ni PLATING OVER Cu PLATING

4. ELECTRICAL CHARACTERISTICS

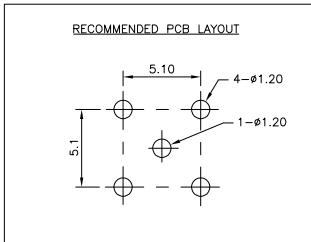
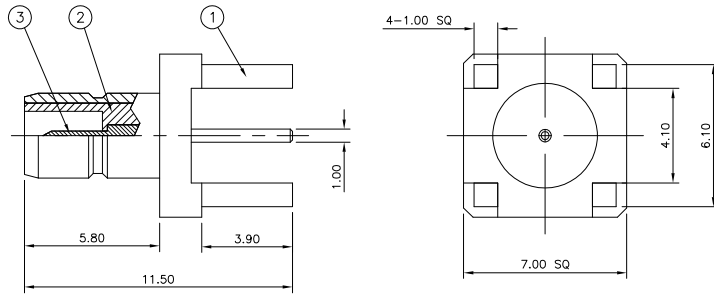
FREQUENCY RANGE: DC - 4 GHz
 NOMINAL IMPEDANCE: 50 Ohm
 INSULATION RESISTANCE: 1000 MOhm
 WORKING VOLTAGE: 250 Volts RMS at Sea Level
 DIELECTRIC WITHSTAND VOLTAGE: 750 Volts RMS Max
 CONTACT RESISTANCE:
 CENTRE CONTACT: 6.00 mOhm Max
 OUTER CONTACT: 1.00 mOhm Max

5. MECHANICAL CHARACTERISTICS

DURABILITY: 500 Cycles Min

6. ENVIRONMENTAL CHARACTERISTICS

OPERATING TEMPERATURE: -65 to +165 DegC



QTY	DESCRIPTION	UNIT	REMARKS
1	BRASS	CONTACT	⚠ 3
1	PTFE	INSULATION	2
1	BRASS	BODY	⚠ 1
6--0	MATERIAL	DESCRIPTION	ITEM

QUANTITY PER ASSY		PARTS LIST	
1	1	BRASS	CONTACT
1	1	PTFE	INSULATION
1	1	BRASS	BODY
6--0	1--0	MATERIAL	DESCRIPTION

DWN J.SANDWELL 07SEPT05
 CHK S.PARLOW 07SEPT05
 APVD F.WHEELER-KING 07SEPT05
 NAME
Tyco Electronics Tyco Electronics Corporation
 Bideford, UK, EX39 4HE
 PRODUCT SPEC
 APPLICATION SPEC
 WEIGHT
 SIZE A3 CAGE CODE 00779 DRAWING NO 1337482 RESTRICTED TO
 CUSTOMER DRAWING SCALE NTS SHEET 1 OF 1 REV C

DIMENSIONS:		TOLERANCES UNLESS OTHERWISE SPECIFIED:	
mm			
0 PLC	±	±	±
1 PLC	±	±	±
2 PLC	±	±	±
3 PLC	±	±	±
4 PLC	±	±	±
ANGLES	±	±	±

THIS DRAWING IS A CONTROLLED DOCUMENT.
 MATERIAL FINISH
 SEE TABLE