

4

3

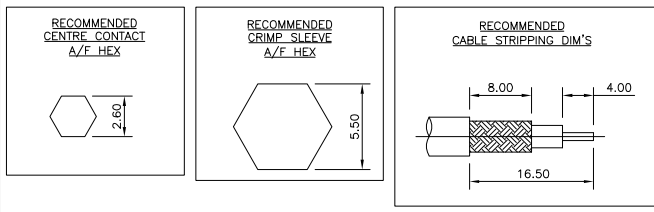
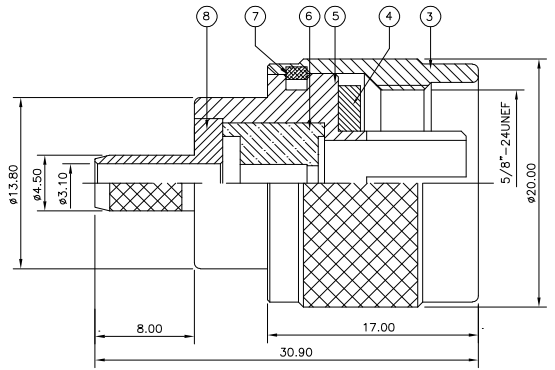
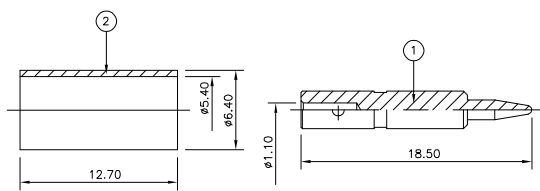
2

1

THIS DRAWING IS UNPUBLISHED. RELEASED FOR PUBLICATION SEP. 2005.
 © COPYRIGHT 2005 BY TYCO ELECTRONICS CORPORATION. ALL RIGHTS RESERVED.

LOC	DIST	REVISIONS			
P	LTR	DESCRIPTION	DATE	DWN	APVD
C		ECR-05-011509	21SEP05	JMS	FWK

- NOTES:**
- 1. PACK IN ACCORDANCE WITH AMP SPEC 107-3275
 - 2. 100 TRAY PACK IN ACCORDANCE WITH AMP SPEC 107-3275
 - 3. Ag PLATING
 - 4. THIS ITEM MUST BE WHITE
 - 5. HAND TOOL: 9-1478240-0
 - 6. DIE SET: 9-1478242-0
 - 7. **ELECTRICAL CHARACTERISTICS**
 FREQUENCY RANGE: DC - 11 GHz
 NOMINAL IMPEDANCE: 50 Ohm
 INSULATION RESISTANCE: 5000 MOhm
 WORKING VOLTAGE: 1000 Volts RMS at Sea Level
 DIELECTRIC WITHSTAND VOLTAGE: 2500 Volts RMS Max
 CONTACT RESISTANCE:
 CENTRE CONTACT: 1.00 mOhm Max
 OUTER CONTACT: 1.00 mOhm Max
 VSWR @ 4GHz: 1.30:1 Max
 INSERTION LOSS dB @ x 4 GHz: 0.30 Max
 - 8. **MECHANICAL CHARACTERISTICS**
 COUPLING NUT RETENTION FORCE: 445N Min
 CABLE RETENTION FORCE: 170N Min
 DURABILITY: 500 Cycles Min
 - 9. **ENVIRONMENTAL CHARACTERISTICS**
 OPERATING TEMPERATURE: -65 to +165 DegC



THIS DRAWING IS A CONTROLLED DOCUMENT.

DIMENSIONS:	TOLERANCES UNLESS OTHERWISE SPECIFIED:
mm	
0 PLC	±
1 PLC	±
2 PLC	±
3 PLC	±
4 PLC	±
ANGLES	±
FINISH	±

MATERIAL: SEE TABLE
FINISH: SEE TABLE

QTY	PER ASSY	PARTS LIST	DESCRIPTION	ITEM
1	1	BRASS	CHASSIS	8
1	1	BRASS	CIRCLIP	7
1	1	PTFE	INSULATION	6
1	1	BRASS	BODY	5
1	1	SILICON RUBBER	GASKET	4
1	1	BRASS	SHELL	3
1	1	BRASS	FERRULE	2
1	1	BRASS	CONTACT	1
6-0	1-0	MATERIAL	DESCRIPTION	ITEM

QUANTITY PER ASSY: 1-0

Tyco Electronics Corporation
Bideford EX39 4HE

NAME: TYPE-N STRAIGHT PLUG CRIMP 50 OHM
RG58C/U, 141A/U, URM43, 76, Belden 9907, KX15

SIZE: A3 CAGE CODE: 00779 DRAWING NO: 1337416 RESTRICTED TO: -

WEIGHT: -

CUSTOMER DRAWING SCALE: NTS SHEET: 1 OF 1 REV: C