

4

3

2

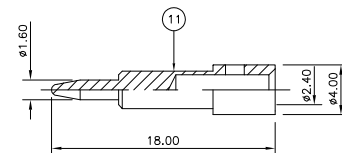
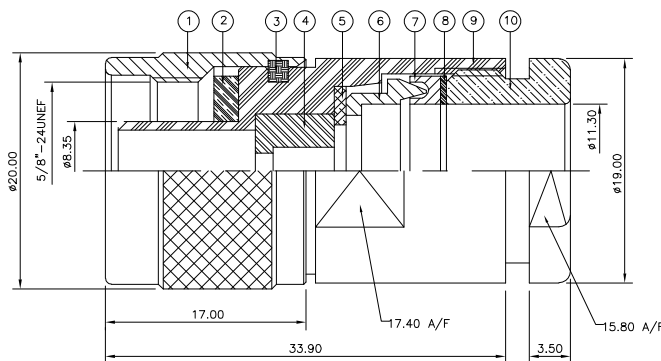
1

THIS DRAWING IS UNPUBLISHED. RELEASED FOR PUBLICATION SEP. 2005.  
 © COPYRIGHT 2005 BY TYCO ELECTRONICS CORPORATION. ALL RIGHTS RESERVED.

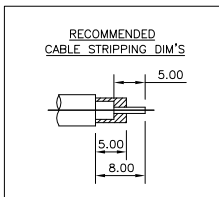
LOC		DIST		REVISIONS			
P	LTR	DESCRIPTION	DATE	DWN	APVD		
C		ECR-05-010526	14SEP05	JMS	FWK		

- NOTES:
- ⚠ PACK IN ACCORDANCE WITH AMP SPEC 107-3275
  - ⚠ 100 TRAY PACK IN ACCORDANCE WITH AMP SPEC 107-3275
  - ⚠ Ag PLATING
  - ⚠ THIS ITEM MUST BE WHITE

5. ELECTRICAL CHARACTERISTICS
- |                               |                             |
|-------------------------------|-----------------------------|
| FREQUENCY RANGE:              | DC - 11 GHz                 |
| NOMINAL IMPEDANCE:            | 50 Ohm                      |
| INSULATION RESISTANCE:        | 5000 MOhm                   |
| WORKING VOLTAGE:              | 1000 Volts RMS at Sea Level |
| DIELECTRIC WITHSTAND VOLTAGE: | 2500 Volts RMS Max          |
| CONTACT RESISTANCE:           | 1.00 mOhm Max               |
| CENTRE CONTACT:               | 1.00 mOhm Max               |
| OUTER CONTACT:                | 1.30:1 Max                  |
| VSWR @ 4GHz:                  | 1.30:1 Max                  |
| INSERTION LOSS dB @ x 4 GHz:  | 0.30 Max                    |
6. MECHANICAL CHARACTERISTICS
- |                               |                |
|-------------------------------|----------------|
| COUPLING NUT RETENTION FORCE: | 445N Min       |
| CABLE RETENTION FORCE:        | 350N Min       |
| CLAMP NUT RECOMMENDED TORQUE: | 4.5N           |
| DURABILITY:                   | 500 Cycles Min |
7. ENVIRONMENTAL CHARACTERISTICS
- |                        |                  |
|------------------------|------------------|
| OPERATING TEMPERATURE: | -65 to +165 DegC |
|------------------------|------------------|



QTY	QTY PER ASSY	PARTS LIST	DESCRIPTION	ITEM
1	1	BRASS	CONTACT	11
1	1	BRASS	CLAMP NUT	10
1	1	BRASS	BODY	9
1	1	BRASS	WASHER	8
1	1	SILICON RUBBER	GASKET	7
1	1	BRASS	SLEEVE	6
1	1	BRASS	WASHER	5
1	1	PTFE	INSULATION	4
1	1	BRASS	CIRCLIP	3
1	1	SILICON RUBBER	GASKET	2
1	1	BRASS	SHELL	1
6--0	1--0	MATERIAL	DESCRIPTION	ITEM



THIS DRAWING IS A CONTROLLED DOCUMENT.		DWN	J. SANDWELL	14SEP05
DIMENSIONS:		CHK	S. PARLOW	14SEP05
mm	TOLERANCES UNLESS OTHERWISE SPECIFIED:	APVD	F. WHEELER-KING	14SEP05
	0 PLC ± -	NAME	TYPE-N STRAIGHT PLUG SOLDER 50 OHM	
	1 PLC ± -	PRODUCT SPEC	PSF1/4M, RG8A/U, 213/U, URM67, KX4	
	2 PLC ± -	APPLICATION SPEC	-	
	3 PLC ± -	WEIGHT	-	
	4 PLC ± -	CUSTOMER DRAWING	-	
	ANGLES ± -	SCALE	NTS	
MATERIAL	FINISH	SIZE	CAGE CODE	DRAWING NO
SEE TABLE	SEE TABLE	A3	00779	1337402

Tyco Electronics Corporation		Bideford EX39 4HE	
RESTRICTED TO			
SHEET		REV	
1	1	C	