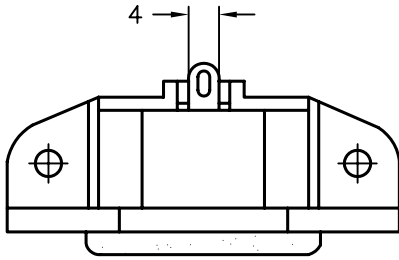
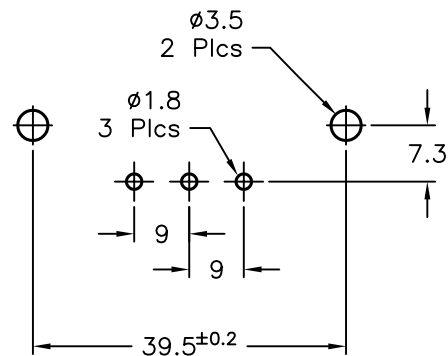
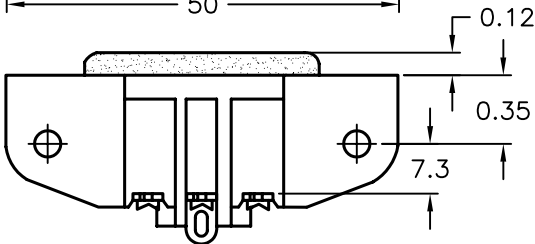
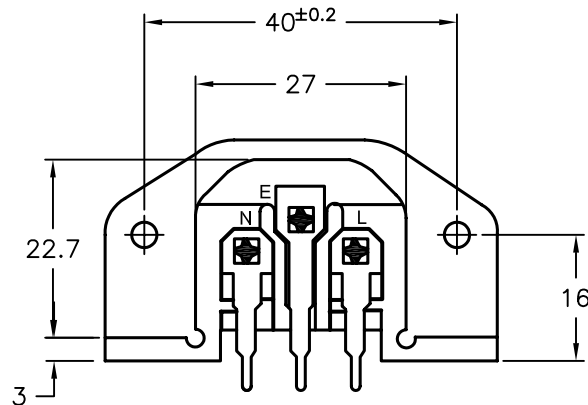
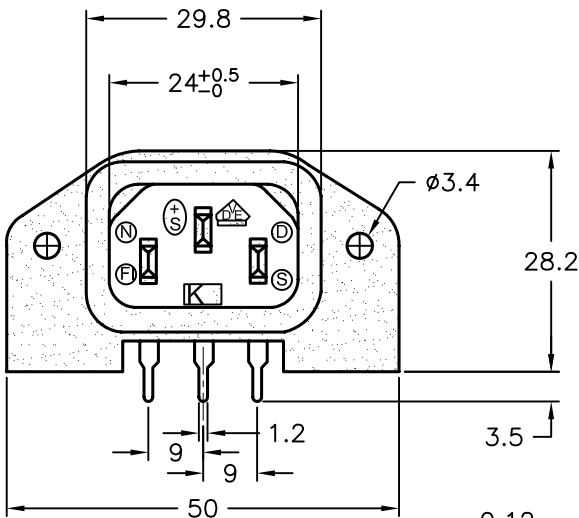


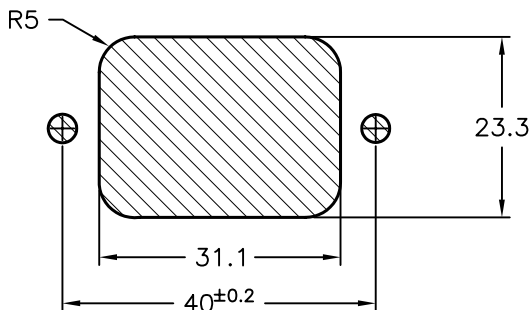
DCP #	REV	DESCRIPTION	DRAWN	DATE	CHECKD	DATE	APPRVD	DATE
162	A	RELEASED	JWM	1/22/98	JC	2/4/98	BB	2/5/98
1780	B	Rohs Added	DCM	10/16/05	JWM	10/17/05	JWM	10/17/05



Ratings:
 15A, 250VAC - UL & CSA
 10A, 250VAC - VDE



PCB Layout



Panel Cutout

SPC-F004.DWG

TOLERANCES: UNLESS OTHERWISE SPECIFIED, DIMENSIONS ARE FOR REFERENCE PURPOSES ONLY.	DRAWN BY:	DATE:	DRAWING TITLE:			
	Jeff McVicker	1/22/98	Angled Inlet PCB Mount IEC 320-C14			
	CHECKED BY:	DATE:	SIZE	DWG. NO.	ELECTRONIC FILE	REV
	John Cole	2/4/98	A	2146	92N4149.dwg	B
APPROVED BY:	DATE:	SCALE:		U.O.M.:		SHEET:
Brett Braatz	2/5/98	NTS		Millimeters		1 OF 1

ALL RIGHTS RESERVED. NO PORTION OF THIS PUBLICATION, WHETHER IN WHOLE OR IN PART CAN BE REPRODUCED WITHOUT THE EXPRESS WRITTEN CONSENT OF SPC TECHNOLOGY. DISCLAIMER: ALL STATEMENTS AND TECHNICAL INFORMATION CONTAINED HEREIN ARE BASED UPON INFORMATION AND/OR TESTS WE BELIEVE TO BE ACCURATE AND RELIABLE. SINCE CONDITIONS OF USE ARE BEYOND OUR CONTROL, THE USER SHALL DETERMINE THE SUITABILITY OF THE PRODUCT FOR THE INTENDED USE AND ASSUME ALL RISK AND LIABILITY WHATSOEVER IN CONNECTION THEREWITH.