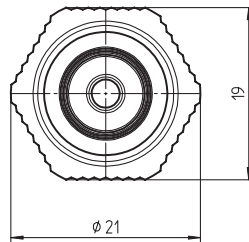
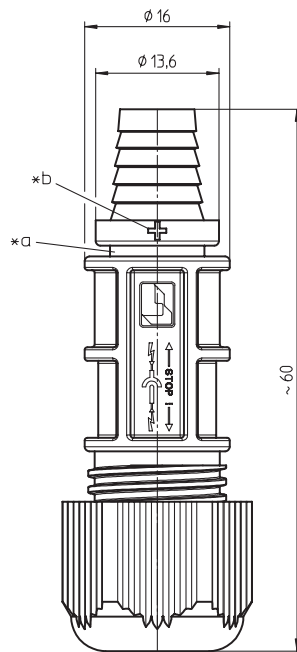
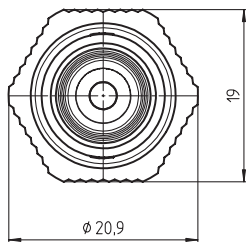
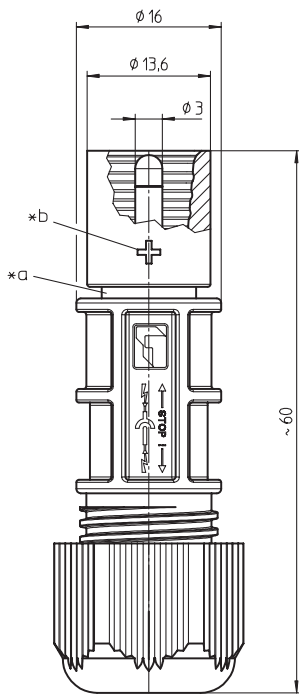



LC3-CP 30

LC3-CP 31


LC3-CP 30	(4730)
LC3-CP 31	(4731)

Photovoltaic connector, field-attachable, with crimp contact

LC3-CP 30: plug

LC3-CP 31: socket

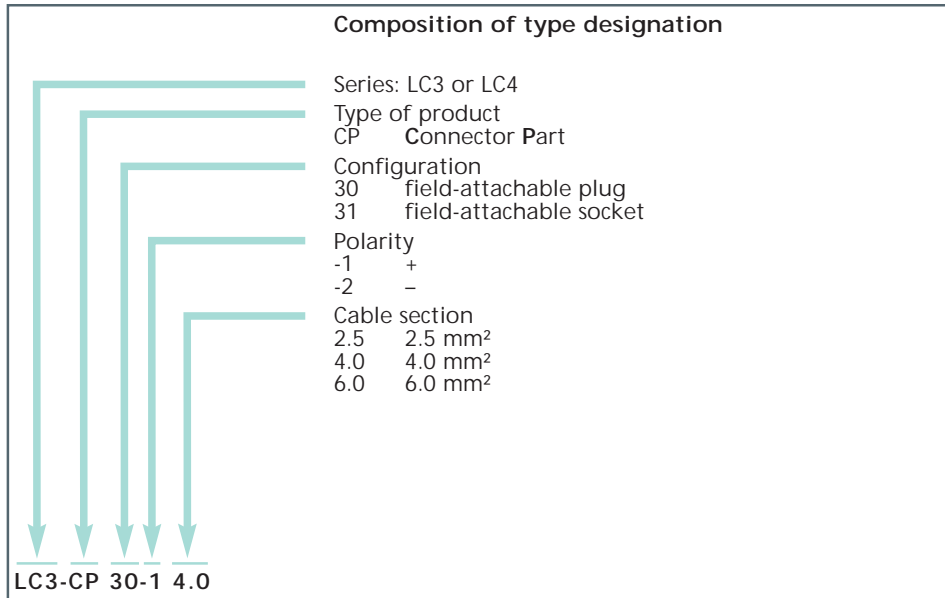
1. Temperature range	-40 °C/+85 °C (+110 °C upper limit temperature)
2. Materials	<p>Body/housing: TPU, V0 according to UL 94 halogen-free, UV-resistant</p> <p>Contact pin/bush: CuZn, pre-nickel and tinned</p> <p>Contact protection (plugs only): PA 6.6, V0 according to UL 94</p> <p>Sleeve (sockets only): CuZn, nickel</p> <p>Cap nut: PA 6, V0 according to UL 94</p> <p>Seal: NBR</p>
3. Mechanical data	<p>Insertion force¹: ≤ 60 N</p> <p>Withdrawal force¹: ≥ 65 N</p> <p>Mating with photovoltaic connectors LC3: IP 67</p> <p>Connectable conductors crimp terminal</p> <p>Section LC3-CP ... 2.5: 2.5 mm² (AWG 14)</p> <p>Section LC3-CP ... 4.0: 4.0 mm² (AWG 12)</p> <p>Section LC3-CP ... 6.0: 6.0 mm² (AWG 10)</p>
4. Electrical data (at T_{amb} 20 °C)	<p>Contact resistance: ≤ 5.0 mΩ</p> <p>Rated current LC3-CP ... 2.5: 22 A at T_{amb} 85 °C</p> <p>Rated current LC3-CP ... 4.0: 35 A at T_{amb} 85 °C</p> <p>Rated current LC3-CP ... 6.0: 40 A at T_{amb} 85 °C</p> <p>Rated voltage³: 1000 V DC</p> <p>Overvoltage category³: III (8 kV)</p> <p>Material group³: I (CTI ≥ 600)</p> <p>Creepage distance: ≥ 12.5 mm</p> <p>Clearance: ≥ 12.5 mm</p> <p>Insulation resistance: > 10 GΩ</p>

¹ measured with a proper counterpart
² 1 m/24 h, only in mated condition with a proper counterpart
³ IP X8 requirements under agreement between manufacturer and user according to DIN EN 60664/IEC 60664



*a recess for optional unmating preventer LC3-CX 90 according to NEC 2008 NFPA 70

*b marking + on LC3-CP ...-1, - bei LC3-CP ...-2



Features and benefits

- can be assembled anywhere on-site
- convenient for smaller installations
- complements the wiring concept with pre-assembled, overmolded connectors, like for feeding lines
- quick and easy assembly
- only one tool necessary for stripping and crimping
- easily exchangeable tool insert for different sections
- rugged and durable for permanently reliable system operation
- with contact-voltage protection
- optional locking according to NEC 2008 NFPA 70
- highest protection degree IP 68
- UV and ozone-resistant
- halogen-free

LC3®

Typical examples

Designation	Description	Polarity	Section (mm ²)
LC3-CP 30-1 2.5	field-attachable plug	+	2.5
LC3-CP 30-2 4.0	field-attachable plug	-	4.0
LC3-CP 30-1 6.0	field-attachable plug	+	6.0
LC3-CP 31-2 4.0	field-attachable socket	-	4.0

Package unit: 50 pieces in a cardboard box