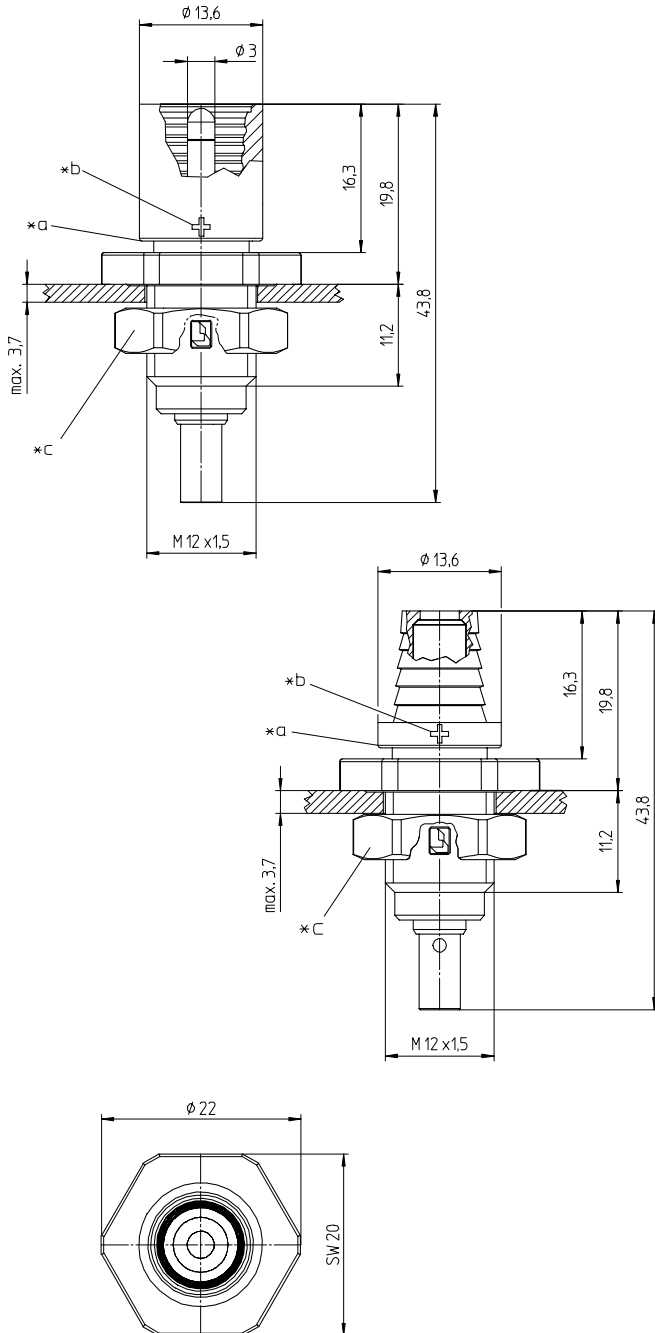




LC3-CP 10



LC3-CP 11



LC3-CP 10	(4710)
LC3-CP 11	(4711)

Photovoltaic chassis receptacle, with crimp contact, for front mounting

LC3-CP 10: plug

LC3-CP 11: socket

1. **Temperature range** -40 °C/+85 °C
(+110 °C upper limit temperature)

2. **Materials**

Body/housing	TPU, V0 according to UL 94 halogen-free, UV-resistant
Contact pin/bush	CuZn, pre-nickel and tinned
Contact protection (plugs only)	PA 6.6, V0 according to UL 94
Sleeve (sockets only)	CuZn, nickleed
Hexagonal nut	PA 6.6 GF

3. **Mechanical data**

Insertion force ¹	≤ 60 N
Withdrawal force ¹	≥ 65 N
Mating with	photovoltaic connectors LC3
Protection degree ²	IP 68

Connectable conductors crimp terminal

Section LC3-CP 10-... 2.5	2.5 mm ² (AWG 14)
Section LC3-CP 10-... 4.0	4.0 mm ² (AWG 12)
Section LC3-CP 10-... 6.0	6.0 mm ² (AWG 10)

4. **Electrical data** (at T_{amb} 20 °C)

Contact resistance	≤ 5.0 mΩ
Rated current LC3-CP ... 2.5	22 A at T _{amb} 85 °C
Rated current LC3-CP ... 4.0	35 A at T _{amb} 85 °C
Rated current LC3-CP ... 6.0	40 A at T _{amb} 85 °C
Rated voltage ³	1000 V DC
Overvoltage category ³	III (8 kV)
Material group ³	I (CTI ≥ 600)
Creepage distance	≥ 12.5 mm
Clearance	≥ 12.5 mm
Insulation resistance	> 10 GΩ

¹ measured with a proper counterpart

² 1 m/24 h, only in mated condition with a proper counterpart

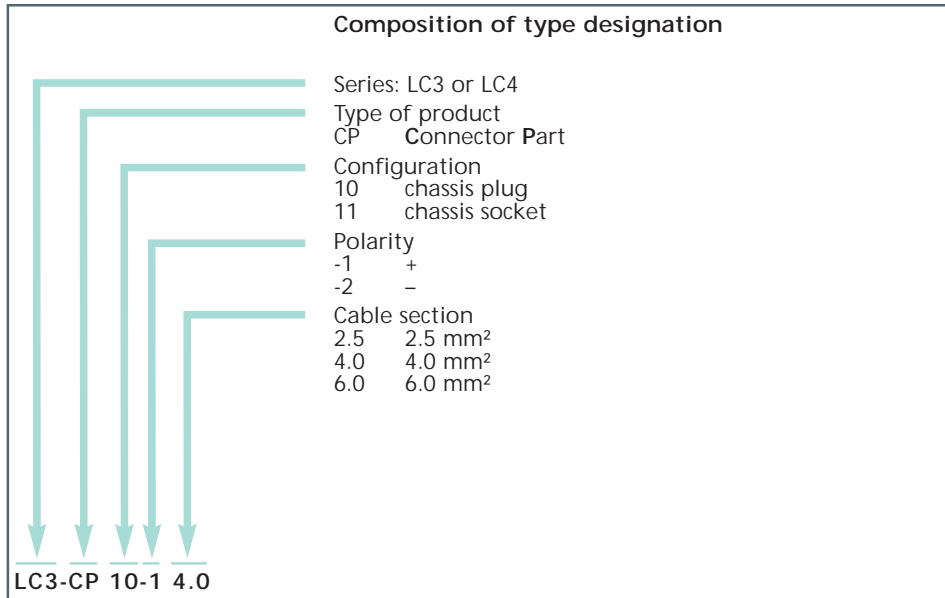
³ IP X8 requirements under agreement between manufacturer and user according to DIN EN 60664/IEC 60664



*a recess for optional unmating preventer LC3-CX 90 according to NEC 2008 NFPA 70

*b marking + on LC3-CP ...-1, - bei LC3-CP ...-2

*c nut enclosed separately



Features and benefits

- chassis receptacles for system components such as inverters, generator isolation housings or accumulation boxes
- quick and easy assembly
- manual tool and crimping machine allow for cost-effective assembly of small and high volumes
- rugged and durable for permanently reliable system operation
- optional locking according to NEC 2008 NFPA 70
- with contact-voltage protection
- highest protection degree IP 68
- UV and ozone-resistant
- halogen-free
- protective caps available for transport or spare receptacles

LC3®

Typical examples

Designation	Description	Polarity	Section (mm ²)
LC3-CP 10-1 4.0	chassis plug	+	4.0
LC3-CP 10-1 6.0	chassis plug	+	6.0
LC3-CP 11-2 4.0	chassis socket	-	4.0
LC3-CP 11-2 6.0	chassis socket	-	6.0

Package unit: 100 pieces in a cardboard box