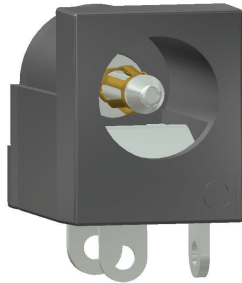


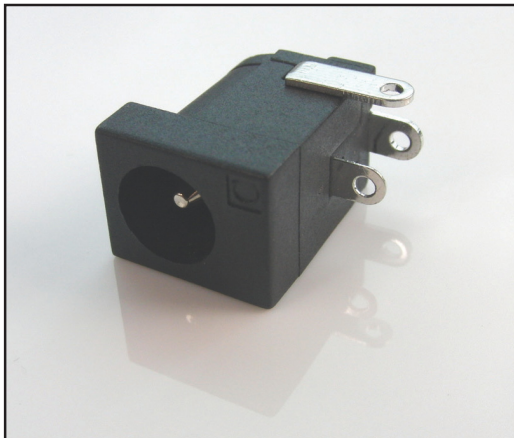
CLIFF

DC10L DUAL DC SOCKET Accepts 2.1mm & 2.5mm Plugs

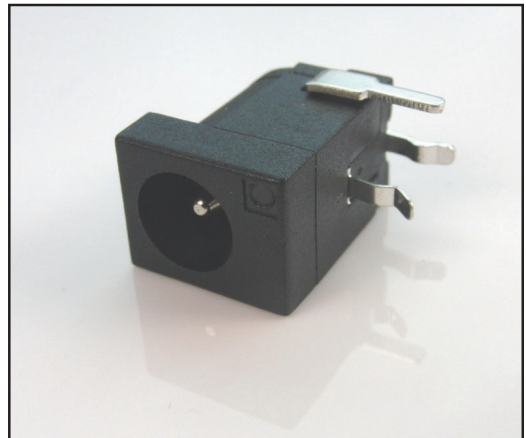
Unique patented design ensures superior contact for
both 2.1mm & 2.5mm plugs



- Rated 5 Amps at 12 Volts.
- Body material is PBT for superior temperature characteristics.
- Contacts are Copper alloy / Tin plated.
- Available in 90° PCB mounting or Solder tag / Chassis mounting.
- RoHS compliant.
- UK Patent No: 2447648, USA Patent No: 7648380



FCR681465
DC10L Solder Tag



FCR681465P
DC10LP 90° PCB Mounting

For further information, contact: sales@cliffuk.co.uk

Cliff Electronic Components Limited,
76 Holmethorpe Avenue, Holmethorpe Ind. Estate,
Redhill, Surrey RH1 2PF U.K.
Tel: +44 (0)1737 771375 Fax: +44 (0)1737 766012



Visit us online at:

www.cliffuk.co.uk