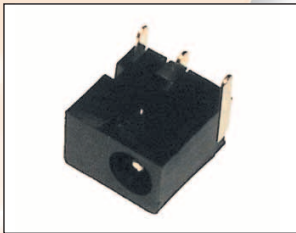
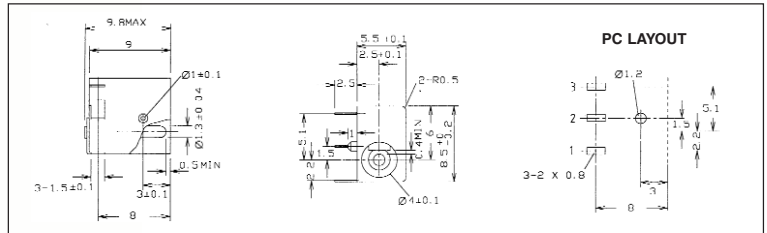


The **CLIFF®** range of DC Power Connectors comprise several different models for chassis mounting and horizontal or vertical PCB mounting. Our products are manufactured to strict quality and performance standards and incorporate a tough durable UL 94V-0 body. The standard colour is Black and some models are available with a choice of pin diameters and switched contacts. Typical applications include portable equipment of all types, signal processors, power supplies etc.



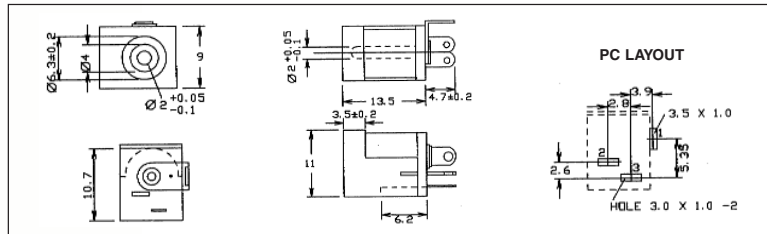
DC-8 PCB mounting pin ring type. Rated 12V / 1A. Miniature version for PCB mounting. 1.3mm dia. pin.

DC-8 (FC68145)



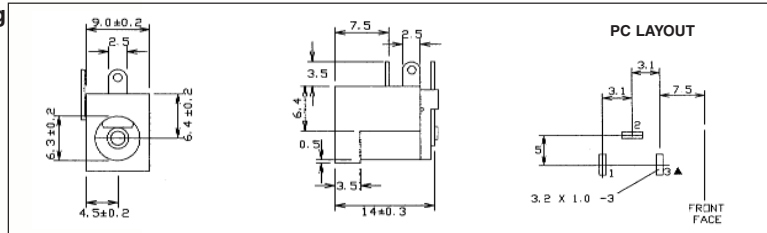
DC-9 PCB mounting pin ring type with switch. Rated 12V / 5A. DC9 with 2.1mm dia. pin. DC9A with 2.5mm dia. pin.

**DC-9 (FC68146)
DC-9A (FC681461)**



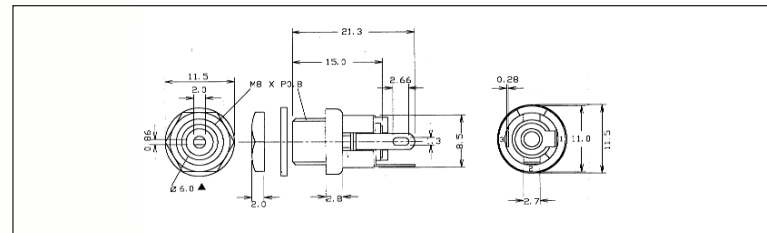
DC-10 PCB mounting pin / ring type with switch. Rated 12V / 5A. DC10A with 2.1mm dia. pin. DC10B with 2.5mm dia. pin.

**DC-10A (FC68148)
DC-10B (FC68149)**



SCD-026 chassis mounting. SCD - 026 with 2.1mm dia. pin. SCD - 026A with 2.5mm dia. pin.

**SCD-026 (FC681445)
SCD-026A (FC681446)**



Cliff Electronic Components, Ltd.
76 Holmethorpe Avenue, Holmethorpe Ind. Est.
Redhill, Surrey RH1 2PF. England
Tel: +44 (0) 1737 771375
Fax: +44 (0) 1737 766012
Email: sales@cliffuk.co.uk



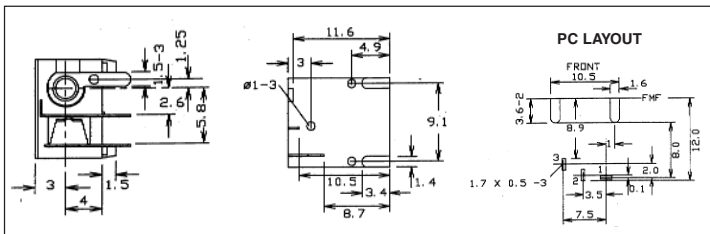
Visit us online at:

www.cliffuk.co.uk

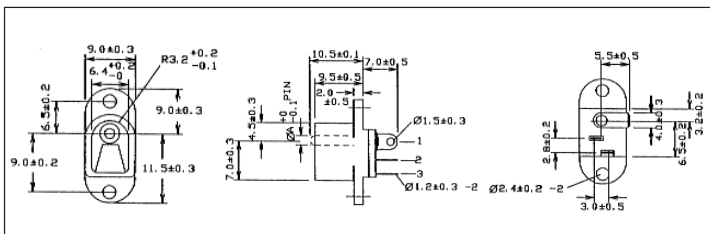


DC-12A PCB mounting pin / ring type with switch.
 Rated 12V / 5A.
 With 2.1mm dia. pin.

DC-12A (FC681485)

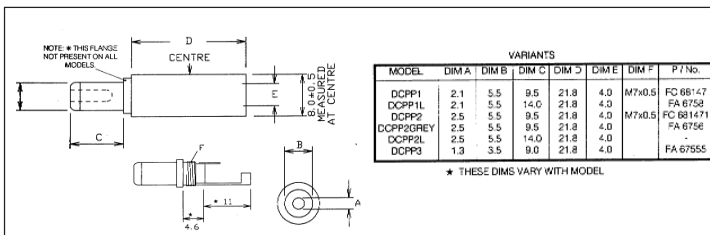


DC-13 panel mounting pin / ring type with switch.
 Rated 12V / 5A.
 DC-13A with 2.1mm dia. pin. DC-13B with 2.5mm dia. pin.
DC-13A (FC681492)
DC-13B (FC681493)



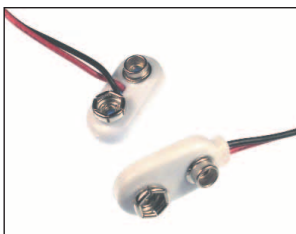
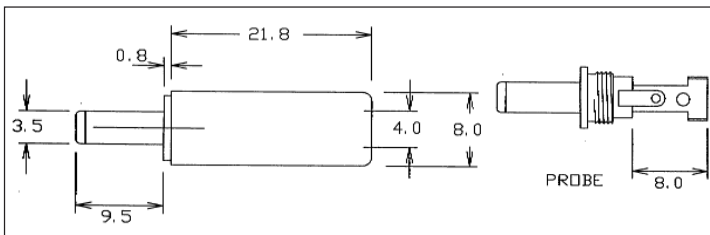
DCPP1 DC Line connector. Rated 12V / 5A. DCPP1 with 2.1mm dia. pin. DCPP2 with 2.5mm dia. pin.

DCPP1 (FC68147)
DCPP2 (FC681471)

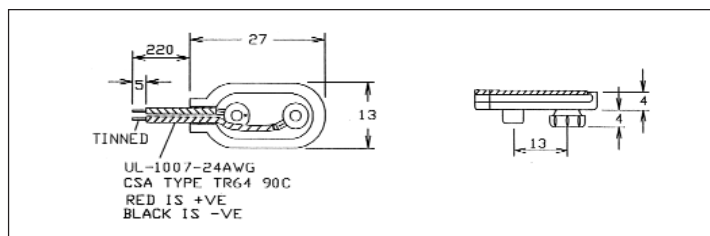


DCPP3 DC Line connector. Rated 12V / 5A. With 1.3mm dia. pin

DCPP3 (FA67555)



CCB-1 9V Battery connector. Cable length 220mm. Tough molded body.
CCB-1A 'T' Type Cable length 220mm.
CCB-1 (FC6830)
CCB-1A (FC6831)



Please note we can also supply DC Plugs moulded onto cable as custom products.