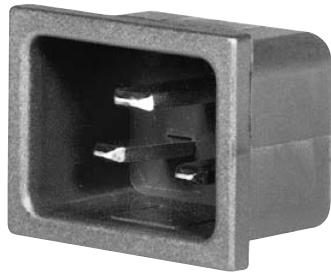


Actual information about approvals can be found on  
<http://www.schurter.com/approvals>



4793

C20



70 °C

### Description

- Panel mount:  
Snap-in, from front side
- Connector, Pin temperature 70 °C, Protection class I
- Solder terminals or quick connect terminals

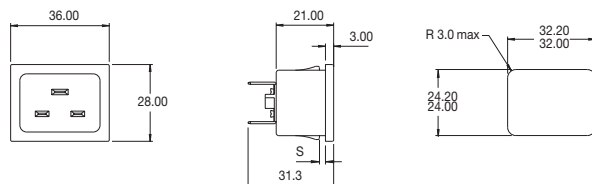
### Technical data

Ratings IEC	16 A / 250 VAC; 50 Hz
Ratings UL/CSA	20 A / 250 VAC; 60 Hz
Dielectric strength	> 2 kVAC between L-N
	> 2 kVAC between L/N-PE (1 min/50 Hz)
Allowable operation temp.	-25 °C to 70 °C
Degree of protection	from front side IP30 acc. to IEC 60529
Protection class	Suitable for appliances with protection class I acc. to IEC 61140

Terminals	Solder terminals or quick connect terminals
Panel thickness s	Snap-in: 1/1.2/1.5/2/2.5/3 mm
Materials: Housing	Thermoplastic, black, UL 94V-0
Appliance-inlet /-outlet	C20 acc. to IEC/EN 60320-1, UL 498, CSA C22.2 no. 42 (for cold condition) pin-temperature 70 °C, 16 A, Protection class I

### Dimensions

4793



## Variants

Order Number	Panel mounting	Panel thickness s [mm]	Terminals
4793.3000	Snap-in	1	Quick connect terminals 6.3 x 0.8 mm
4793.8000	Snap-in	1.2	Quick connect terminals 6.3 x 0.8 mm
4793.4000	Snap-in	1.5	Quick connect terminals 6.3 x 0.8 mm
4793.5000	Snap-in	2	Quick connect terminals 6.3 x 0.8 mm
4793.6000	Snap-in	2.5	Quick connect terminals 6.3 x 0.8 mm
4793.7000	Snap-in	3	Quick connect terminals 6.3 x 0.8 mm
4793.3200	Snap-in	1	Solder terminals 3.8 x 0.8 mm
4793.8200	Snap-in	1.2	Solder terminals 3.8 x 0.8 mm
4793.4200	Snap-in	1.5	Solder terminals 3.8 x 0.8 mm
4793.5200	Snap-in	2	Solder terminals 3.8 x 0.8 mm
4793.6200	Snap-in	2.5	Solder terminals 3.8 x 0.8 mm
4793.7200	Snap-in	3	Solder terminals 3.8 x 0.8 mm

Packaging unit

100 Pcs

Accessories

[ACCESSORIES](#)