

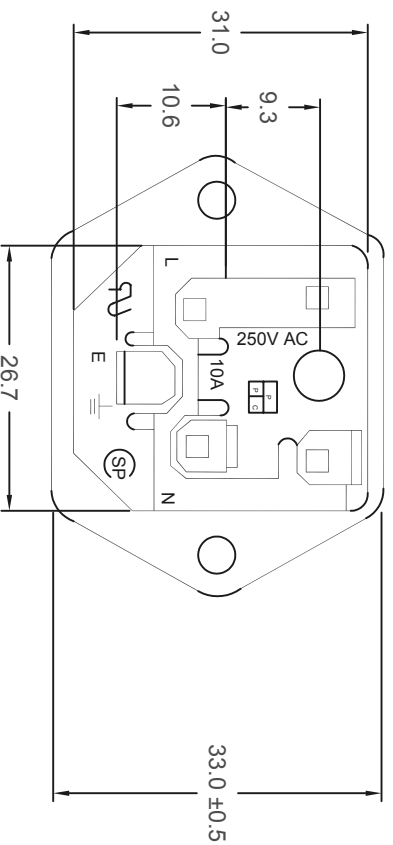
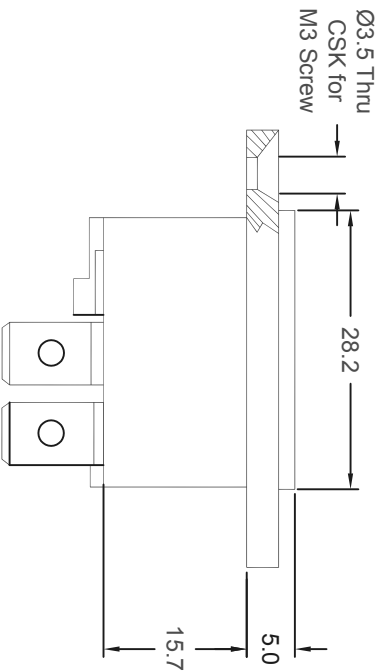
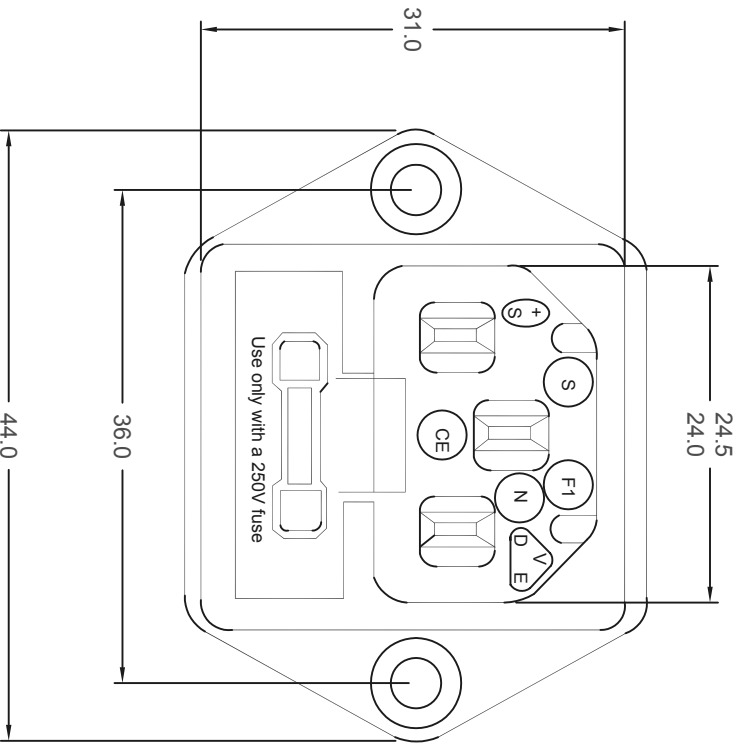
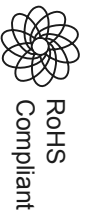
ALL RIGHTS RESERVED. NO PORTION OF THIS PUBLICATION, WHETHER IN WHOLE OR IN PART CAN BE REPRODUCED WITHOUT THE EXPRESS WRITTEN CONSENT OF SPC TECHNOLOGY.

SPC-F005.DWG

REVISIONS

DCP #	REV	DESCRIPTION	DRAWN	DATE	CHECKD	DATE	APPRVD	DATE
			VEE	30-08-10	JAG	30-08-10	XXX	13-09-10

DOC. NO. SPC-F005 * Effective: 7/8/02 * DCP No: 1398



DISCLAIMER:
ALL STATEMENTS AND TECHNICAL INFORMATION CONTAINED HEREIN ARE BASED UPON INFORMATION AND/OR TESTS WE BELIEVE TO BE ACCURATE AND RELIABLE. SINCE CONDITIONS OF USE ARE BEYOND OUR CONTROL, THE USER SHALL DETERMINE THE SUITABILITY OF THE PRODUCT FOR THE INTENDED USE AND ASSUME ALL RISK AND LIABILITY WHATSOEVER IN CONNECTION THEREWITH.

TOLERANCES:
UNLESS OTHERWISE SPECIFIED, DIMENSIONS ARE FOR REFERENCE PURPOSES ONLY.

DRAWN BY:	DATE:
VEE	30-08-10
CHECKED BY:	DATE:
JAG	30-08-10
APPROVED BY:	DATE:
XXX	13-09-10

DRAWING TITLE:		Power Inlet with Fuseholder	
SIZE	DWG. NO.	ELECTRONIC FILE	REV
A	XXX	92N4151	A
SCALE:	NTS	U.O.M.: Millimeters	SHEET: 1 OF 1

ALL RIGHTS RESERVED. NO PORTION OF THIS PUBLICATION, WHETHER IN WHOLE OR IN PART CAN BE REPRODUCED WITHOUT THE EXPRESS WRITTEN CONSENT OF SPC TECHNOLOGY.

SPC-F005.DWG

REVISIONS				DCP No.	SPC-F005	* Effective:	7/8/02	* DCP No.:	1398
DCP #	REV	DESCRIPTION	DRAWN	DATE	CHECKD	DATE	APPRVD	DATE	
			VEE	30-08-10	JAG	30-08-10	XXX	13-09-10	



Material:

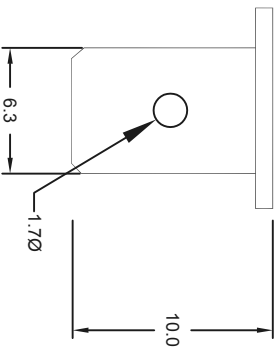
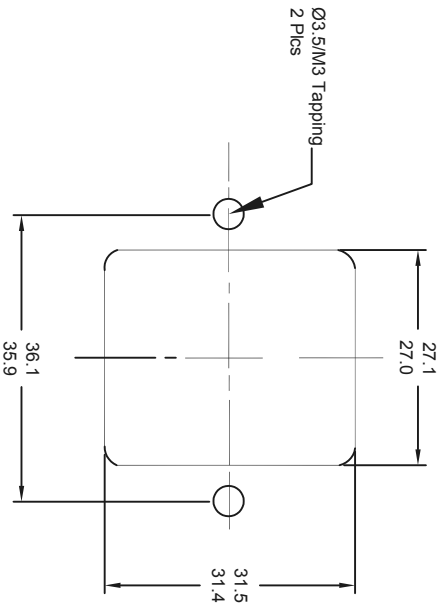
Housing: Thermoplastic
Terminal: Copper alloy

Characteristics:

Rating: 10A 250V AC
Insulation resistance: Over 100 Ohm 500VDC
Dielectric strength: 2000VAC one minute
Mounting screw torques: 5in-Lbs maximum

Approvals:

UL, CSA, VDE, SEMKO, DEMKO,
NEMKO, SETI, CB and SEV, FIMKO
Fuse: 5Ø X 20mm 250VAC 6.3A Maximum



Terminal Detail

Dimensions : Inches (mm)

Part Number Table

Description	Part Number
Power Inlet with Fuseholder	2148

DISCLAIMER:

ALL STATEMENTS AND TECHNICAL INFORMATION CONTAINED HEREIN ARE BASED UPON INFORMATION AND/OR TESTS WE BELIEVE TO BE ACCURATE AND RELIABLE. SINCE CONDITIONS OF USE ARE BEYOND OUR CONTROL, THE USER SHALL DETERMINE THE SUITABILITY OF THE PRODUCT FOR THE INTENDED USE AND ASSUME ALL RISK AND LIABILITY WHATSOEVER IN CONNECTION THEREWITH.

TOLERANCES:

UNLESS OTHERWISE SPECIFIED, DIMENSIONS ARE FOR REFERENCE PURPOSES ONLY.

DRAWN BY:	DATE:	DRAWING TITLE:		ELECTRONIC FILE		REV
VEE	30-08-10	Power Inlet with Fuseholder		92N4151		A
CHECKED BY:	DATE:	SIZE	DWG. NO.			
JAG	30-08-10	A	XXX			
APPROVED BY:	DATE:	SCALE:	NTS	U.O.M.:	Millimeters	SHEET: 1 OF 1
XXX	13-09-10					