



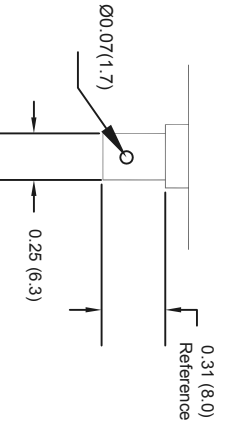
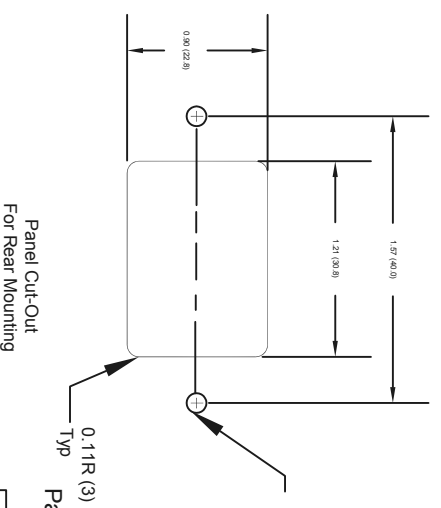
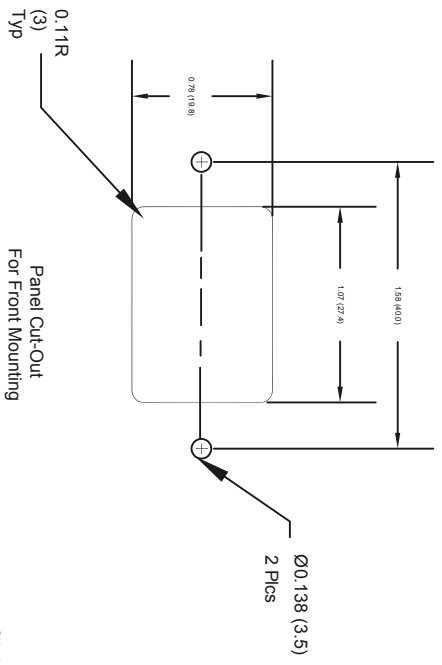
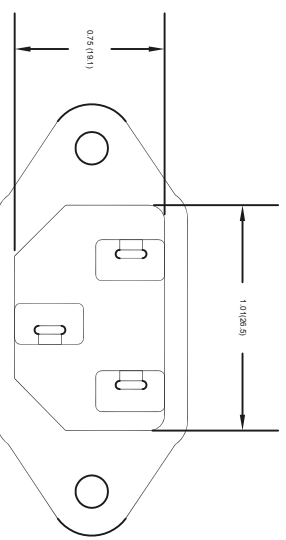
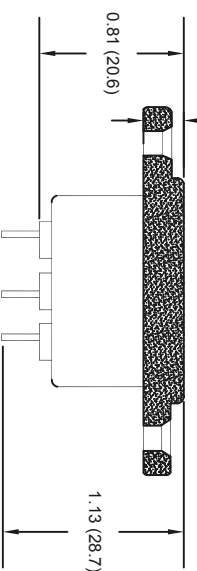
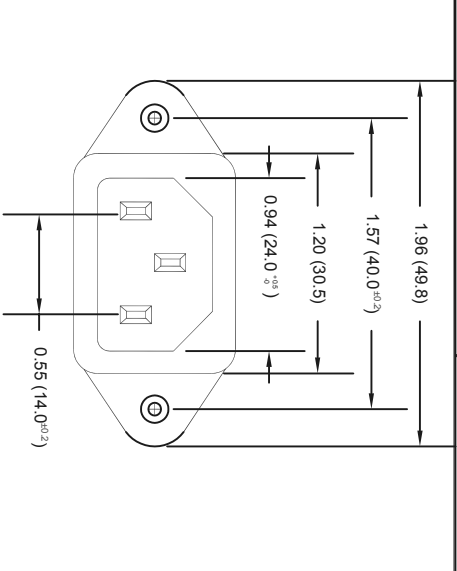
ALL RIGHTS RESERVED. NO PORTION OF THIS PUBLICATION, WHETHER IN WHOLE OR IN PART CAN BE REPRODUCED WITHOUT THE EXPRESS WRITTEN CONSENT OF SPC TECHNOLOGY.

SPC-F005.DWG

REVISIONS

DCP #	REV	DESCRIPTION	DRAWN	DATE	CHECKD	DATE	APPRVD	DATE
			VEE	23-08-10	JAG	26-08-10	XXX	06-09-10

DOC. NO. SPC-F005 * Effective: 7/8/02 * DCP No: 1398



Typical Terminal

Material:
Housing: Thermoplastic, UL94V-0 Maximum temperature 120°C
Terminal: Copper alloy

Characteristics:
Rating: 10A, 250VAC/15A, 250VAC
Insulation resistance: Over 100 Ohm 500 VDC
Dielectric strength: 2000VAC one minute
Mounting screw torque: Kg-cm maximum

Approvals:
Part Number Table CSA, VDE, CB, SEV, SEMKO, DEMKO, NEMKO, and SETI

Description	Part Number
Inlet Receptacle, Male, AC Power	2141

Inlet Receptacle, Male, AC Power

DRAWN BY:	DATE:
VEE	23-08-10
CHECKED BY:	DATE:
JAG	26-08-10
APPROVED BY:	DATE:
XXX	06-09-10

DRAWING TITLE:	
Inlet Receptacle, Male, AC Power	
SIZE	DWG. NO.
A	XXX
SCALE:	U.O.M.:
NTS	Millimeters
ELECTRONIC FILE	REV
92N4144	A
SHEET:	OF
1	1

DISCLAIMER:
ALL STATEMENTS AND TECHNICAL INFORMATION CONTAINED HEREIN ARE BASED UPON INFORMATION AND/OR TESTS WE BELIEVE TO BE ACCURATE AND RELIABLE. SINCE CONDITIONS OF USE ARE BEYOND OUR CONTROL, THE USER SHALL DETERMINE THE SUITABILITY OF THE PRODUCT FOR THE INTENDED USE AND ASSUME ALL RISK AND LIABILITY WHATSOEVER IN CONNECTION THEREWITH.

TOLERANCES:
UNLESS OTHERWISE SPECIFIED, DIMENSIONS ARE FOR REFERENCE PURPOSES ONLY.