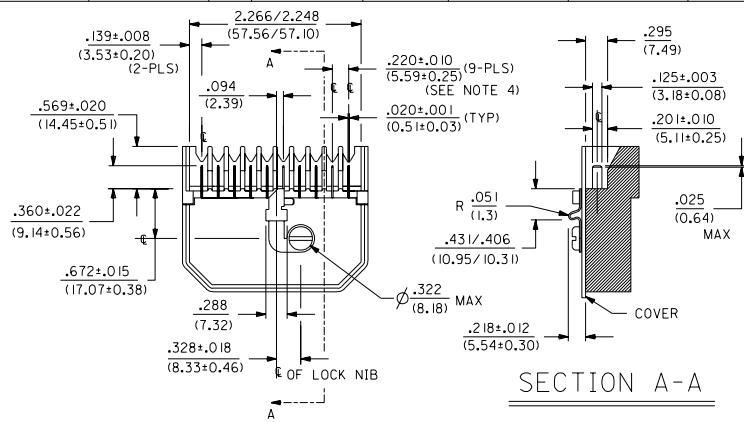
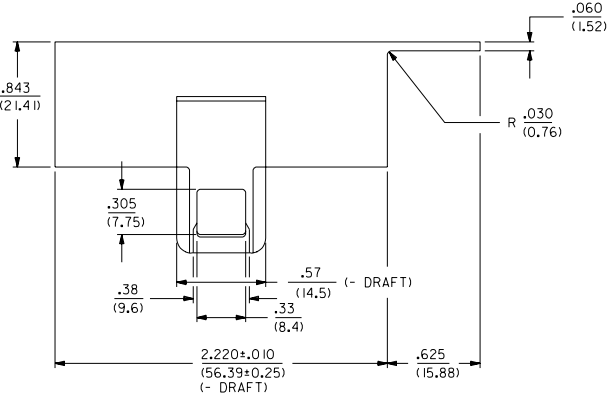
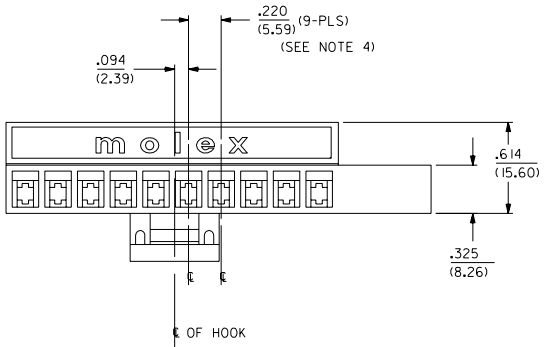


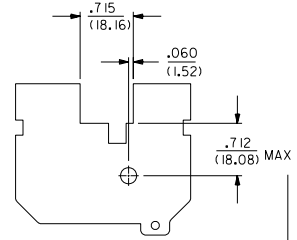
# NOTES

1. THIS HOUSING IS FOR USE WITH TERMINALS:  
- ENG. NO. 1508-0009.
2. UNLESS OTHERWISE SPECIFIED, ALL RADII TO BE  
.025/(0.64).
3. MATERIAL : NYLON 6/6,94V-2. COLOR : NATURAL  
(WHITE/TRANSLUCENT).
4. TOLERANCE IS NOT CUMULATIVE.
5. PRODUCT SPECIFICATION PS-6313-0001 APPLIES.



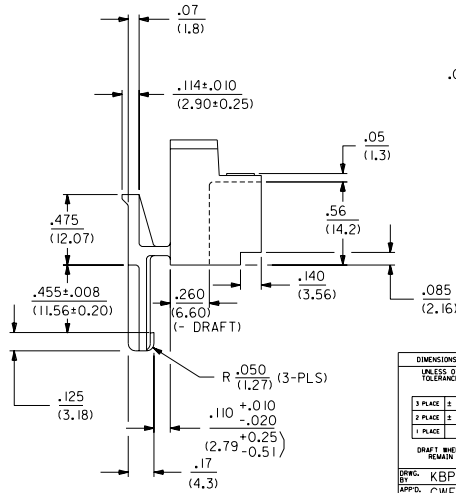
## MOTOR SWITCH

SCALE 1:1



## COVER

.050±.003/(1.27±0.08) THICK



REV.	DESCRIPTION	DATE
F2	REVISED PER ECN U02001-0698 SOMMER 01/01/26	
F1	REVISED PER ECN U02057 PEARSON 97/07/02	
F	REVISED PER ECN U0288 PEARSON 97/04/24	
E	REVISED PER ECN U3086 93/02/05 MAB	
D	REVISED PER ECN U21564 92/10/22 MAB	
C	REVISED PER ECR U00690 90/09/13 TRM	
B	REVISED PER ECR U0 0231 90/2/28	
A	RELEASED PER ECR 28632 89/7/21 COMSTOCK	
2	REDRAWN PER ECR*28487 89/06/02 KBP	

MFG. SHL.	REV.	LTR.	REVISIONS
REVISIONS			
REVISION ONLY ON CAD SYSTEM			
TITLE			
HOUSING, CONNECTOR FOR MOTOR SWITCH APPLICATION			
MOLEX INCORPORATED		SHEET NO.	DATE
60532		1 OF 1	89/05/23
PART NO.		DRWG. NO.	
006-02-3103		SD-6313-1-10	
DRWG. BY: KBP	CHK'D. BY: KBP	FILE NAME:	NO DRAWING CONTAINS INFORMATION THAT IS PROPRIETARY TO MOLEX INC. AND SHOULD NOT BE USED WITHOUT WRITTEN PERMISSION.
APP'D. BY: CWF	SCALE: 2:1	SIZE:	CO C